

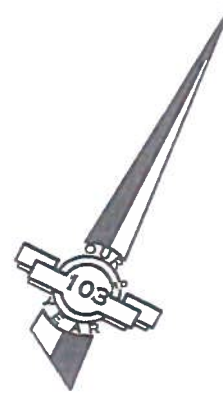
# CERTIFICATE OF SURVEY: TOWN 5 NORTH, RANGE 9 EAST

NAD-83, GEOID 12A  
(PROJ. COORDS)  
ARC GIS: 10.3

INLOT 473 & OUTLOT 59  
IN THE SOUTHWEST 1/4 OF SECTION 35  
VILLAGE OF WESTON, WOOD COUNTY, OHIO

## LEGEND

MONUMENT, FOUND	⊗
SURVEY MARKER (FOUND/SET)	○
CALCULATED	C.
DEED	D.
RECORD	R.
MEASURED	M.
PROPERTY LINE	———
PARCEL LINE	---
LOT LINE	---



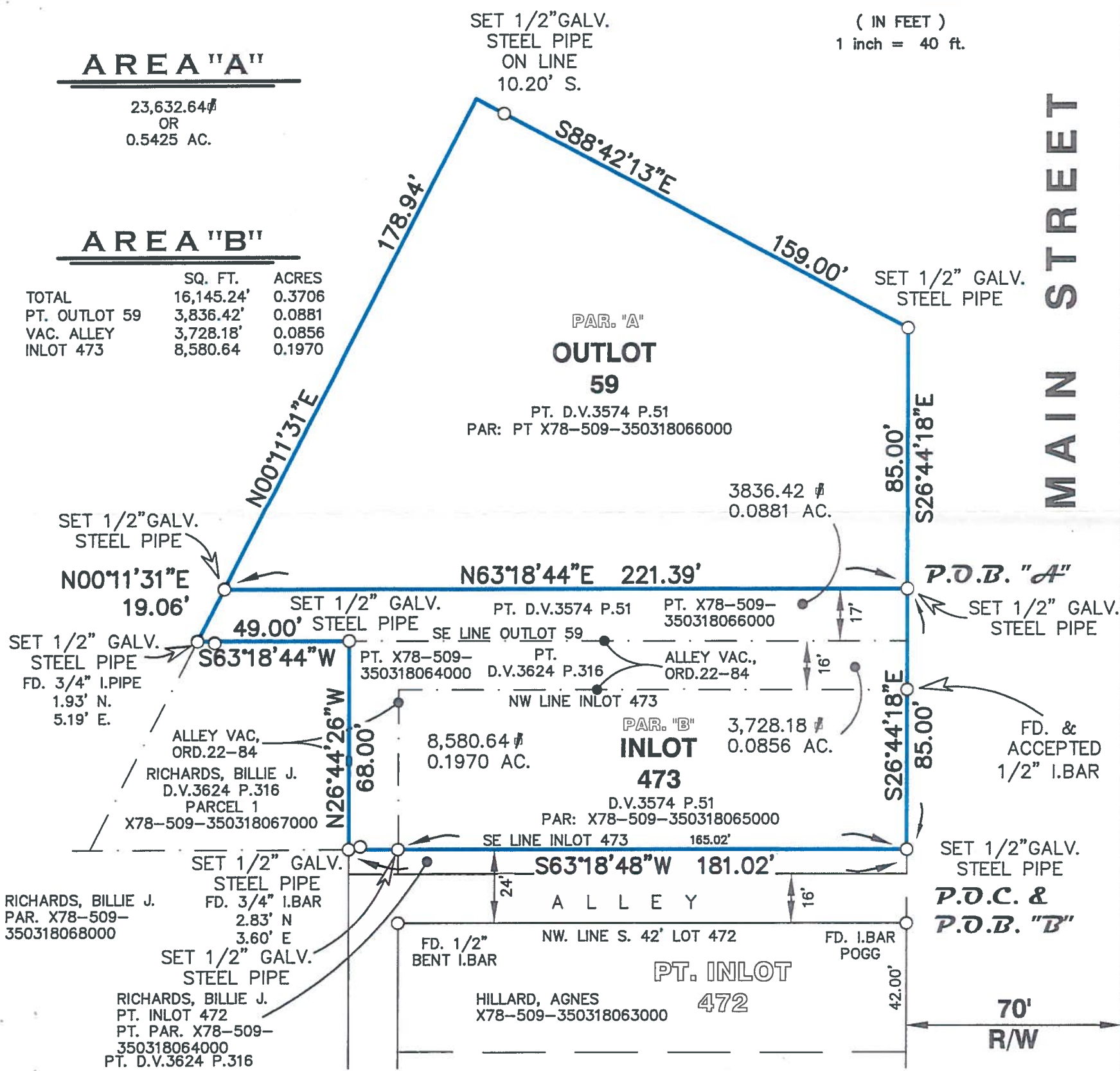
( IN FEET )  
1 inch = 40 ft.

### AREA "A"

23,632.64<sup>±</sup>  
OR  
0.5425 AC.

### AREA "B"

	SQ. FT.	ACRES
TOTAL	16,145.24 <sup>±</sup>	0.3706
PT. OUTLOT 59	3,836.42 <sup>±</sup>	0.0881
VAC. ALLEY	3,728.18 <sup>±</sup>	0.0856
INLOT 473	8,580.64 <sup>±</sup>	0.1970



## REFERENCE DOCS

1. SURVEY BY GOSSMAN, 1965 [25]
2. SURVEY BY POGMEYER, 1969 [40]
3. SURVEY BY VAN HORN, 2007 [229]

## CERTIFICATION

WE HEREBY CERTIFY THAT WE HAVE MADE A SURVEY OF THE PREMISES SHOWN HEREON AS RECORDED IN WOOD COUNTY DEED VOLUME 3574, PAGE 51 AND THAT THIS DRAWING IS A CORRECT PLOT THEREOF. ALL 1/2" GALVANIZED STEEL PIPE SET BY LEWANDOWSKI ENGINEERS ARE CAPPED WITH THE COMPANY NAME AND P.L.S. No. 7476.

REGISTERED SURVEYOR, STATE OF OHIO #7476



### LEWANDOWSKI ENGINEERS

CIVIL ENGINEERS & SURVEYORS  
THE CHIEF BLDG 234 N. ERIE ST.  
TOLEDO, OHIO, 43604  
LEWANDOWSKIENG.COM  
OFFICE: 419.255.4111

