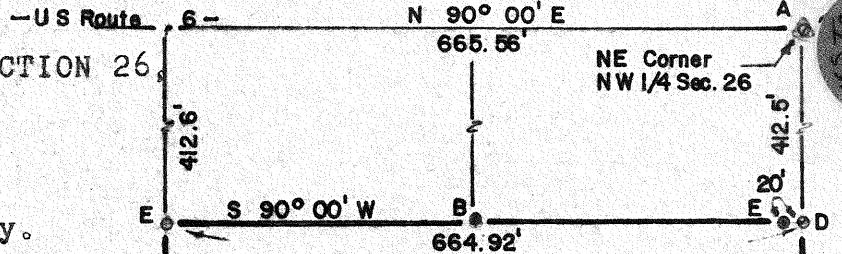
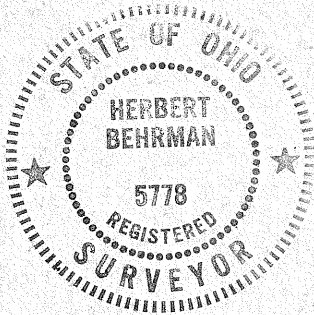
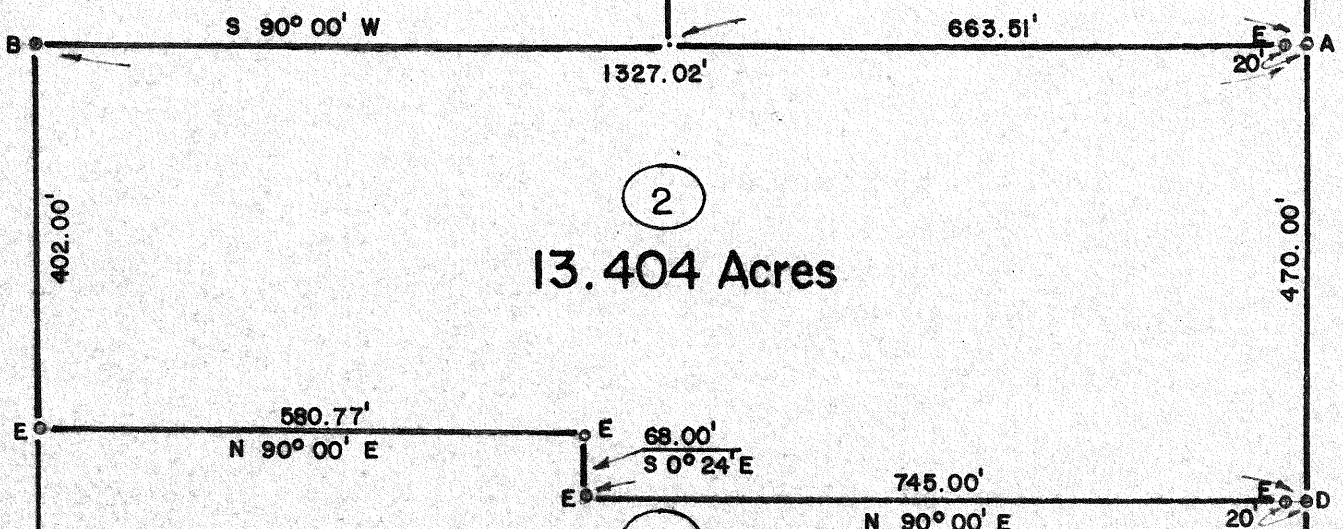


SURVEY OF PART OF THE NW 1/4 OF SECTION 26,
T5N, R9E, WESTON TOWNSHIP,
WOOD COUNTY, OHIO.

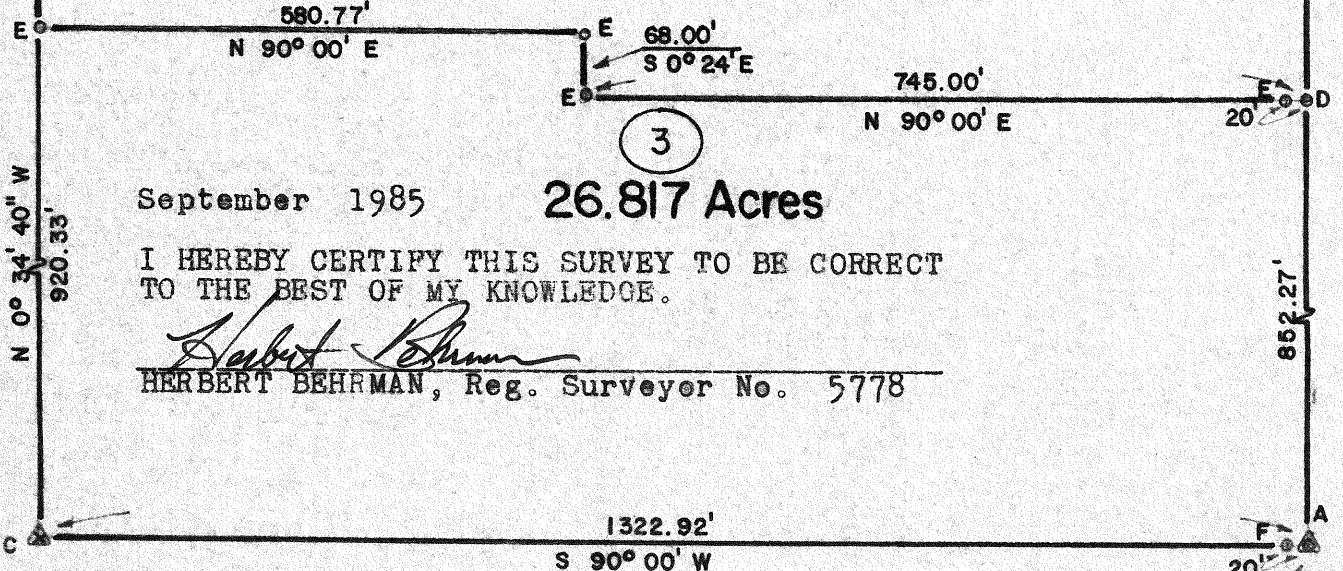
- A - PK nail from previous survey.
- B - Iron pipe from previous survey.
- C - Corner stone from previous survey.
- D - Set PK nail this survey.
- E - Set iron pin this survey.
- F - Existing wood pest.



1
13.872 Acres



2
13.404 Acres



September 1985

3
26.817 Acres

I HEREBY CERTIFY THIS SURVEY TO BE CORRECT
TO THE BEST OF MY KNOWLEDGE.

Herbert Behrman
HERBERT BEHRMAN, Reg. Surveyor No. 5778

Scale 1" = 200'

VAN TASSEL Road - (40' R/W)

W55760
#88
TOP

W55760
#88