

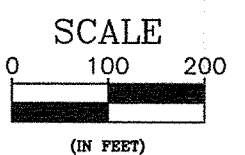
Webster
A
278

PETERMAN ASSOCIATES, INC.

ARCHITECTS - ENGINEERS - SURVEYORS
Corporate Office
3480 N. Main Street
Findley, Ohio 45840
Office (419) 422-8872
Fax (419) 422-9466

Survey For:
Hassan
Being part of the E1/2 of the NE1/4 and SE1/4 of Section 1,
T5N, R11E, Webster Township, Wood County, Ohio

REVISIONS	DATE	BY

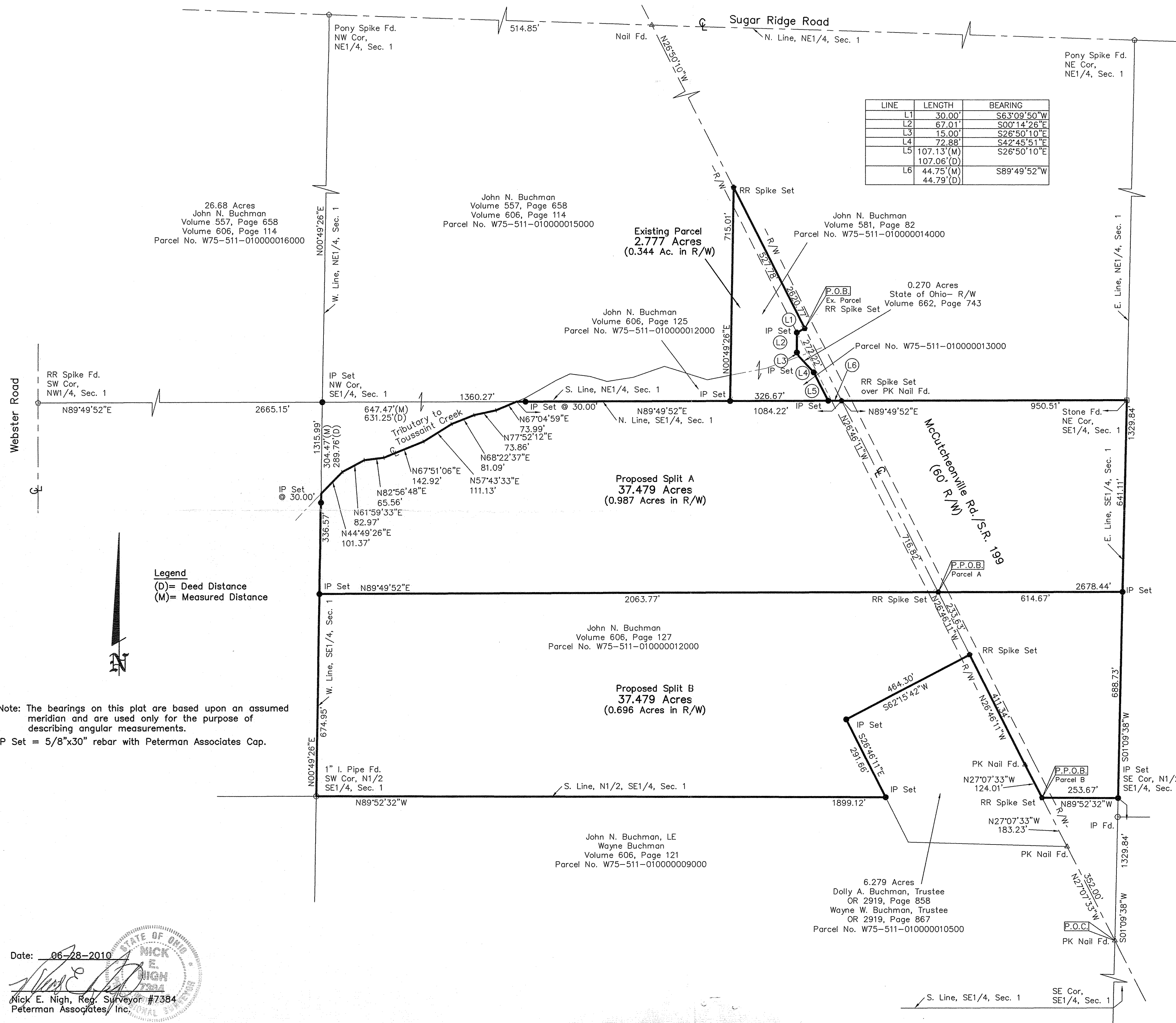


DATE 6-28-10

DWG BY RKT

PROJ. 10-0282-1

LINE	LENGTH	BEARING
L1	30.00'	S63°09'50"W
L2	67.01'	S00°14'26"E
L3	15.00'	S26°50'10"E
L4	72.88'	S42°45'51"E
L5	107.13' (M)	S26°50'10"E
L6	44.75' (M)	S89°49'52"W
	44.79' (D)	

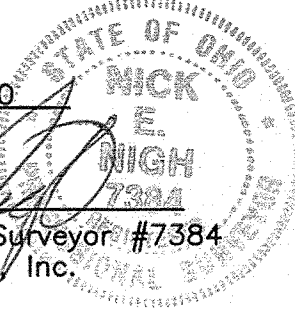


Legend
(D)= Deed Distance
(M)= Measured Distance

Note: The bearings on this plat are based upon an assumed meridian and are used only for the purpose of describing angular measurements.
IP Set = 5/8"x30" rebar with Peterman Associates Cap.

Date: 06-28-2010

Nick E. Nigh, Reg. Surveyor #7384
Peterman Associates, Inc.



Webster
A
278