

306  
WESTON

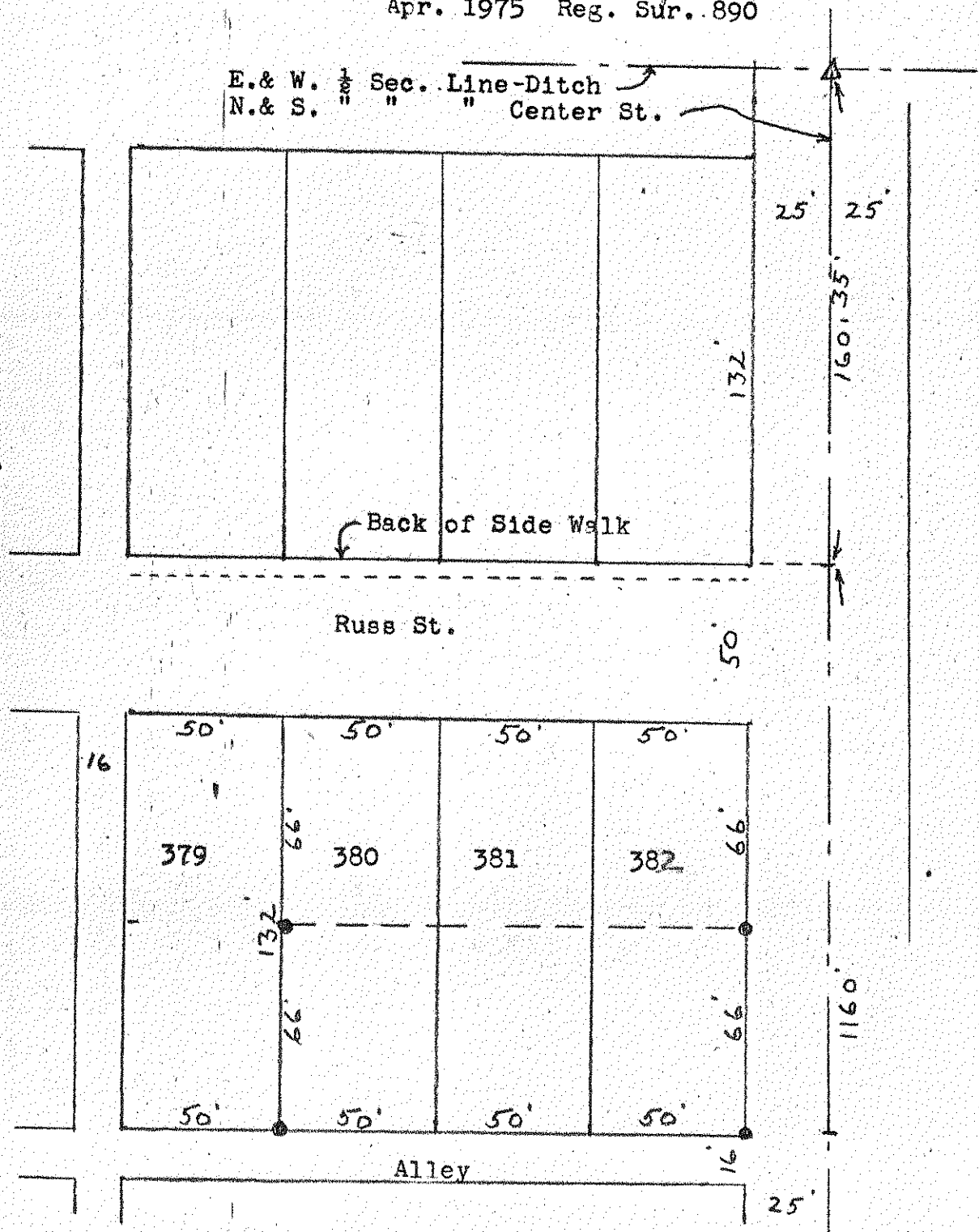
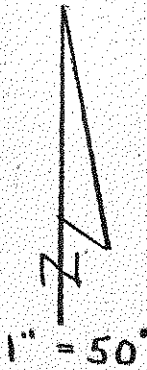
# SURVEY

of  
South  $\frac{1}{2}$  Lots 380, 381, 382 Weston O.

Control points shown thus  $\blacktriangle$   
Iron pipe set at points shown thus  $\bullet$

Surveyed by H. Morgan  
Apr. 1975 Reg. Sur. 890

E. & W.  $\frac{1}{2}$  Sec. Line-Ditch  
N. & S. " " " Center St.



Note: North line walk on Russ St. checked property line using record distance measured from Oak St. Was accepted on this survey.

Oak St.  
306  
WESTON