

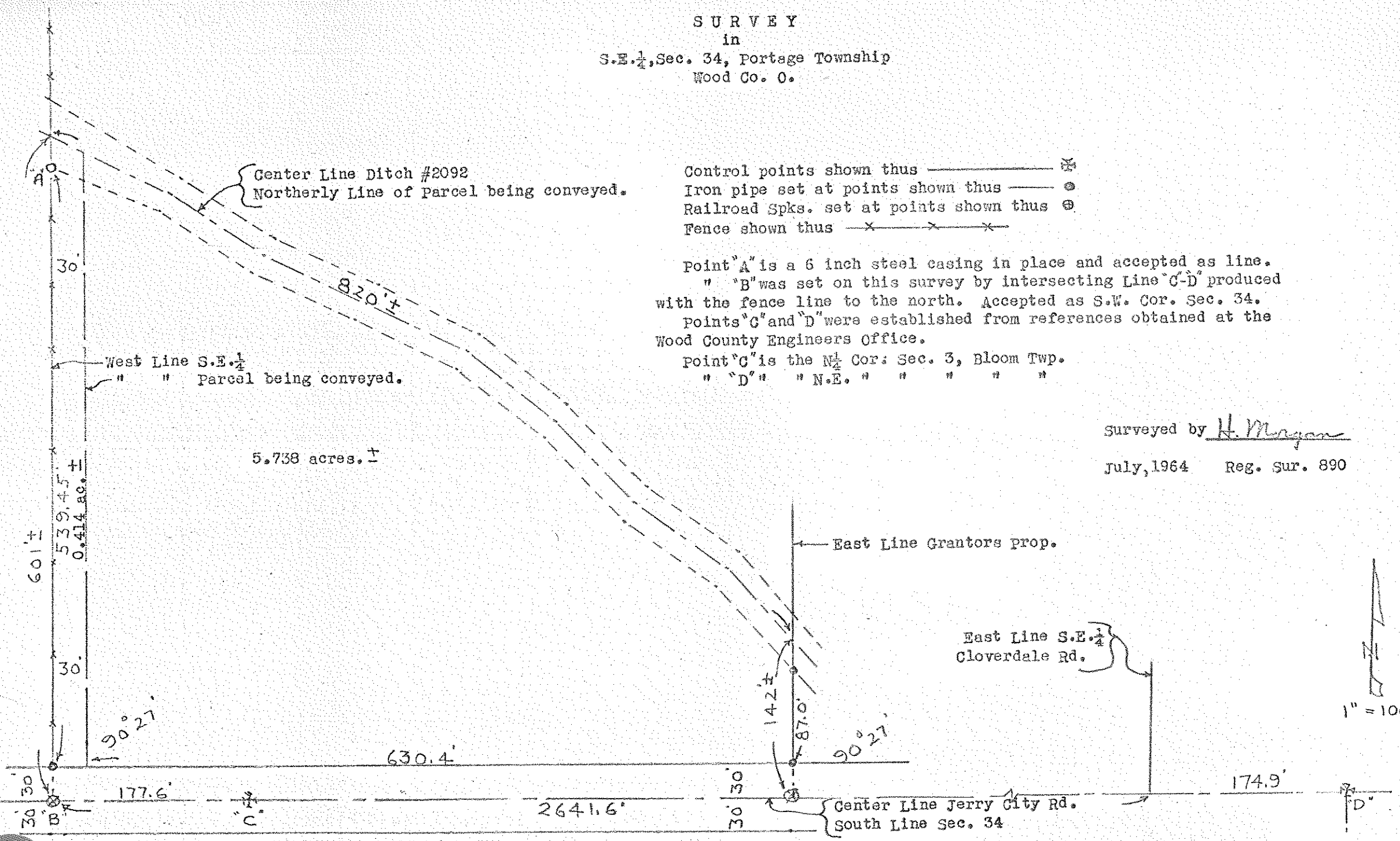
396
PORTAGE

SURVEY
in
S.E. 1/4, Sec. 34, Portage Township
Wood Co. O.

Control points shown thus ———— X
Iron pipe set at points shown thus ———— ●
Railroad Spks. set at points shown thus ———— ⊕
Fence shown thus ———— X—X—X—X

Point "A" is a 6 inch steel casing in place and accepted as line.
" " "B" was set on this survey by intersecting Line "C-D" produced
with the fence line to the north. Accepted as S.W. Cor. Sec. 34.
Points "C" and "D" were established from references obtained at the
Wood County Engineers Office.
Point "C" is the N 1/2 Cor. Sec. 3, Bloom Twp.
" " "D" " N.E. " " " " " "

Surveyed by H. Morgan
July, 1964 Reg. Sur. 890



396
PORTAGE