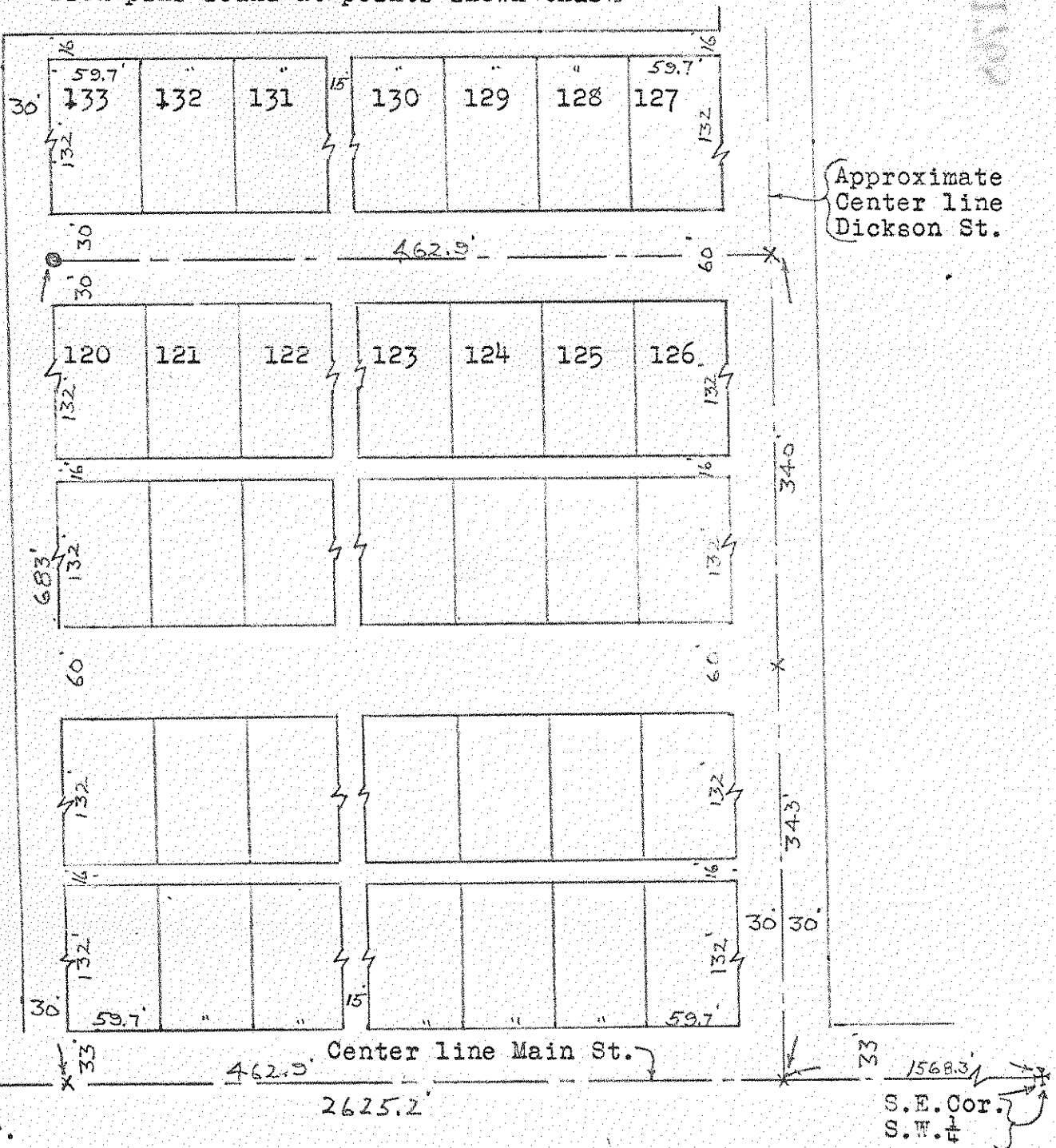


405
PORTAGE

SURVEY
of
Lots 120-133 inc.
Jerry City, O.

Iron pipe set at points shown thus \odot
P.K. Nails set at points shown thus \times
Iron pins found at points shown thus $\#$



S.W. Cor.
Sec. 33
Portage Twp.

Center line Main St.

Approximate
Center line
Dickson St.

Surveyed by H. Morgan

Aug. 17, 1968 Reg. Sur. 890

405
PORTAGE