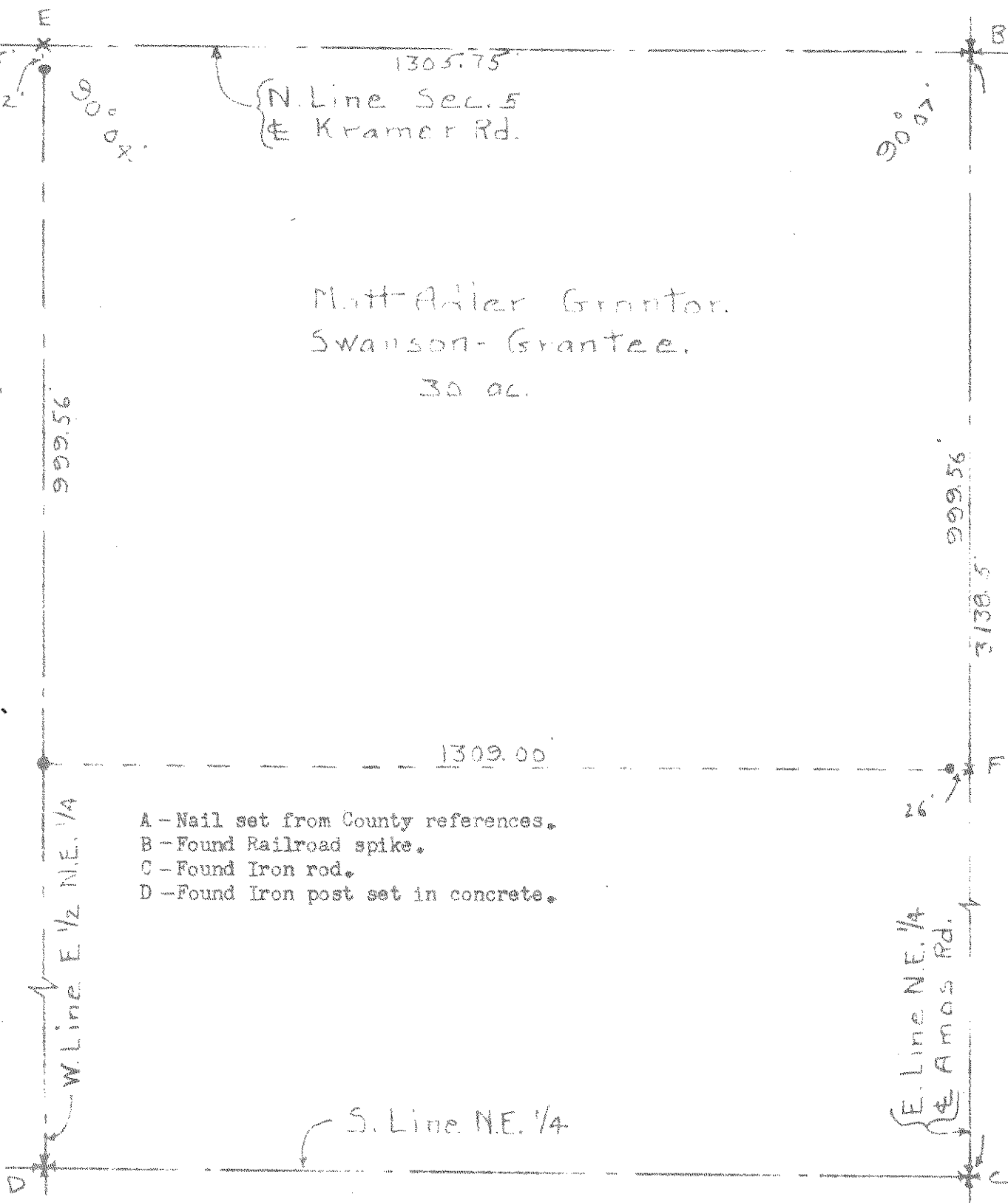


Survey
 in
 E. $\frac{1}{2}$ N. E. $\frac{1}{2}$ Sec. 5, Portage Township
 Wood Co. O.

387
 PORTAGE

N.W. COR. N.E. $\frac{1}{4}$
 1" = 200'



Matt Adler Grantor.
 Swanson-Grantee.
 30 ac.

- A - Nail set from County references.
- B - Found Railroad spike.
- C - Found Iron rod.
- D - Found Iron post set in concrete.

Control points shown thus *
 Iron pipe set at points shown thus •
 Railroad Spikes set at points shown thus x

Surveyed by H. Morgan

Dec. 1960 Reg. Sur. 890

E-Set R.R. Spk. { 64.42' west
 South to Shiner in Power Pole.