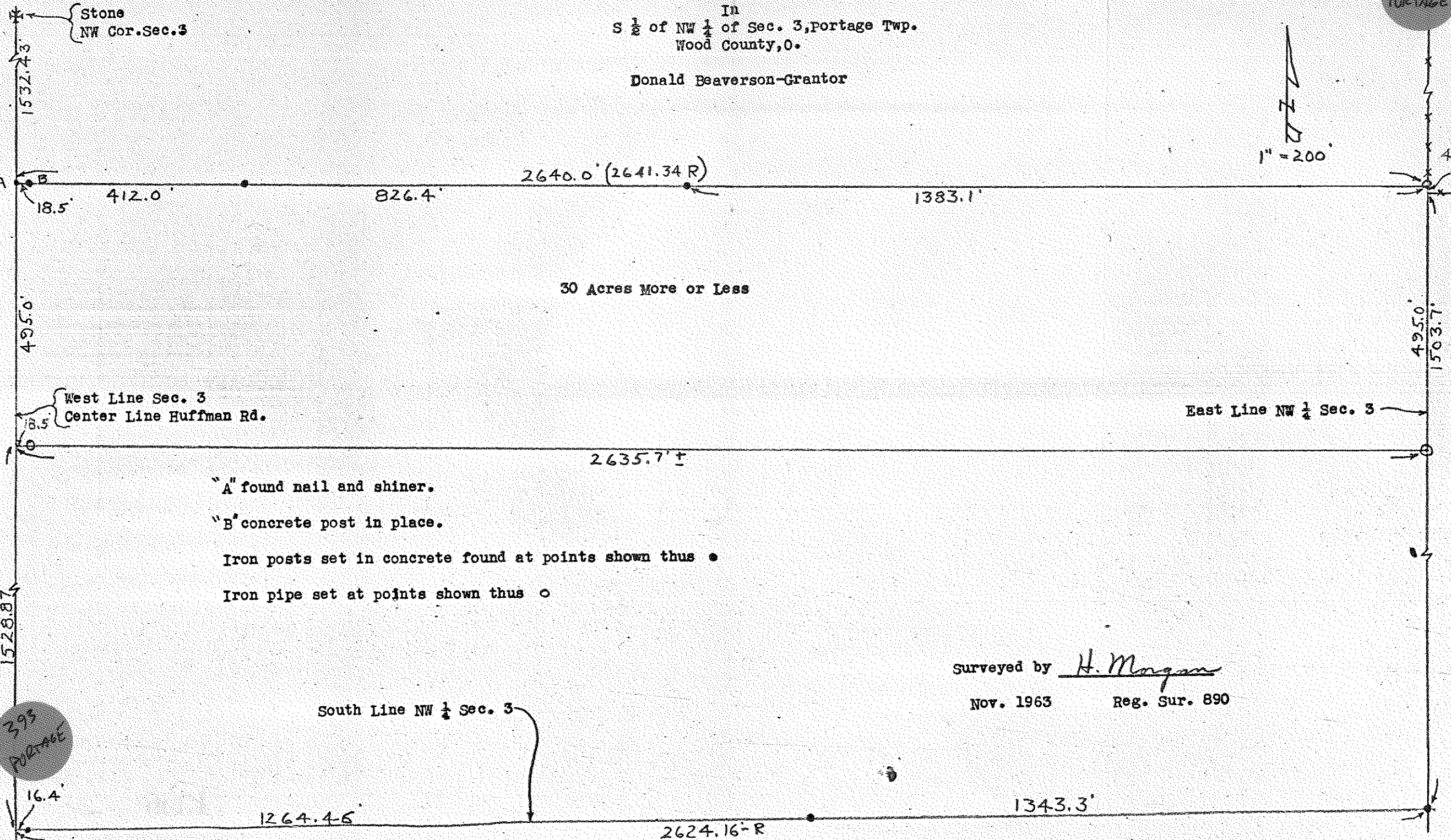


393  
PORTAGE

SURVEY  
In  
S 1/2 of NW 1/4 of Sec. 3, Portage Twp.  
Wood County, O.

Donald Beaverson-Grantor

1  
Z  
D  
1" = 200'



Stone  
NW Cor. Sec. 3

1532.43'

18.5' 412.0'

826.4'

2640.0' (2641.34 R)

1383.1'

30 Acres More or Less

495.0'

West Line Sec. 3  
Center Line Huffman Rd.

18.5'

East Line NW 1/4 Sec. 3

2635.7' ±

"A" found nail and shiner.

"B" concrete post in place.

Iron posts set in concrete found at points shown thus ●

Iron pipe set at points shown thus ○

1528.87'

South Line NW 1/4 Sec. 3

16.4'

1264.45'

2624.16-R

1343.3'

Surveyed by H. Morgan  
Nov. 1963 Reg. Sur. 890

393  
PORTAGE