

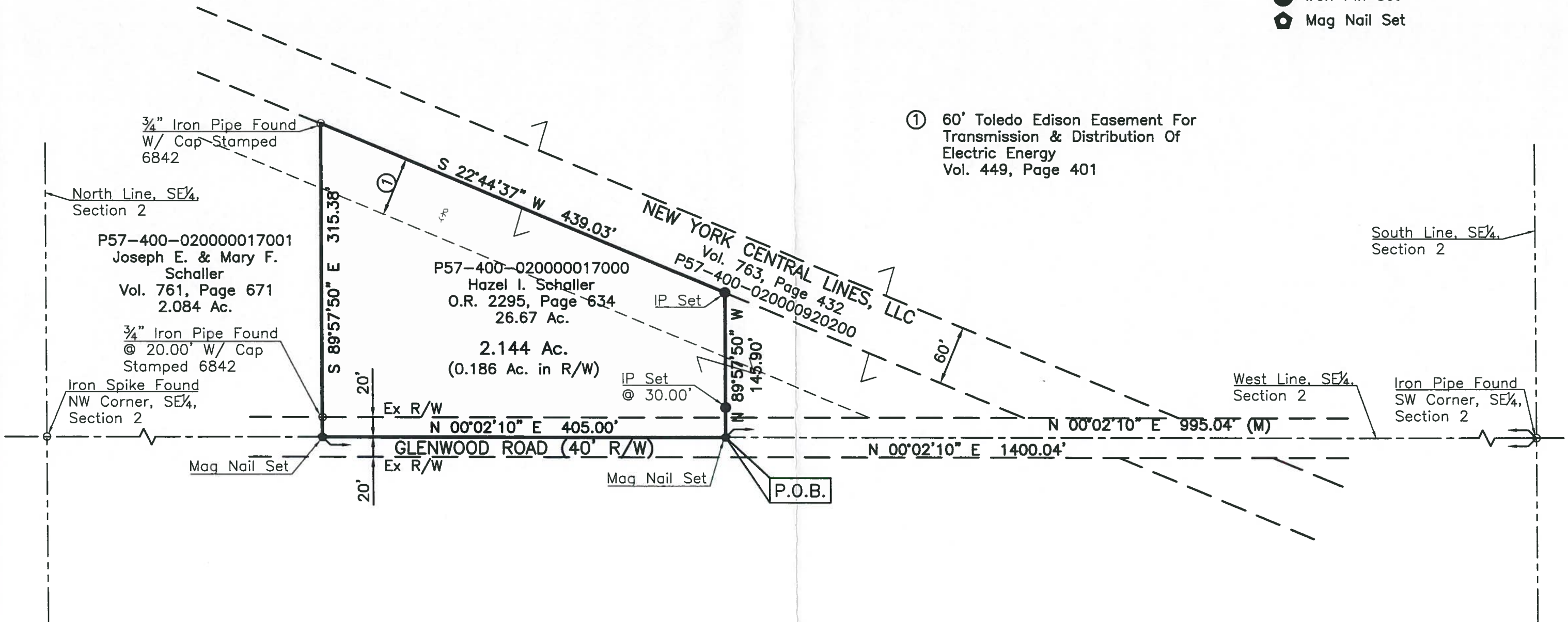
P-Burg
1035

Survey For
Portage Valley Title, LLC
Part SE $\frac{1}{4}$, Section 2, T4, United States Reserve,
Perrysburg Township, Wood County, Ohio

LEGEND

- Iron Pipe/Spike Found
- Iron Pin Set
- ⬠ Mag Nail Set

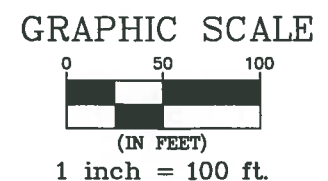
① 60' Toledo Edison Easement For
Transmission & Distribution Of
Electric Energy
Vol. 449, Page 401



SURVEY REFERENCE:

Deed To Joseph E. & Mary F. Schaller, Vol. 761, Page 671,
Wood County Deed Records, Legal Description By Steve
Sanholtz, P.S. 6842, February 2000. No Survey Plat On File At
Wood County Engineers Office.

Survey By Edward Meyer, P.S. 2806, Dated August 2 1957, File
Number 351 P.Burg Wood County Engineers Office.



The Bearings On This Plat Are Based
Upon An Assumed Meridian And Are
Used Only For The Purpose Of
Describing Angular Measurements

IP Set = $\frac{5}{8}$ "x30" Rebar With Peterman Associates Cap.

Date: 10/17/17

NICK E. NIGH
P.S. #7384
PETERMAN ASSOCIATES, INC.
3480 N. MAIN STREET
FINDLAY, OHIO 45840
Dwg By: SM

Project No. 17-0392

P-Burg
1035