

316
MILTON

ALSO
COPY

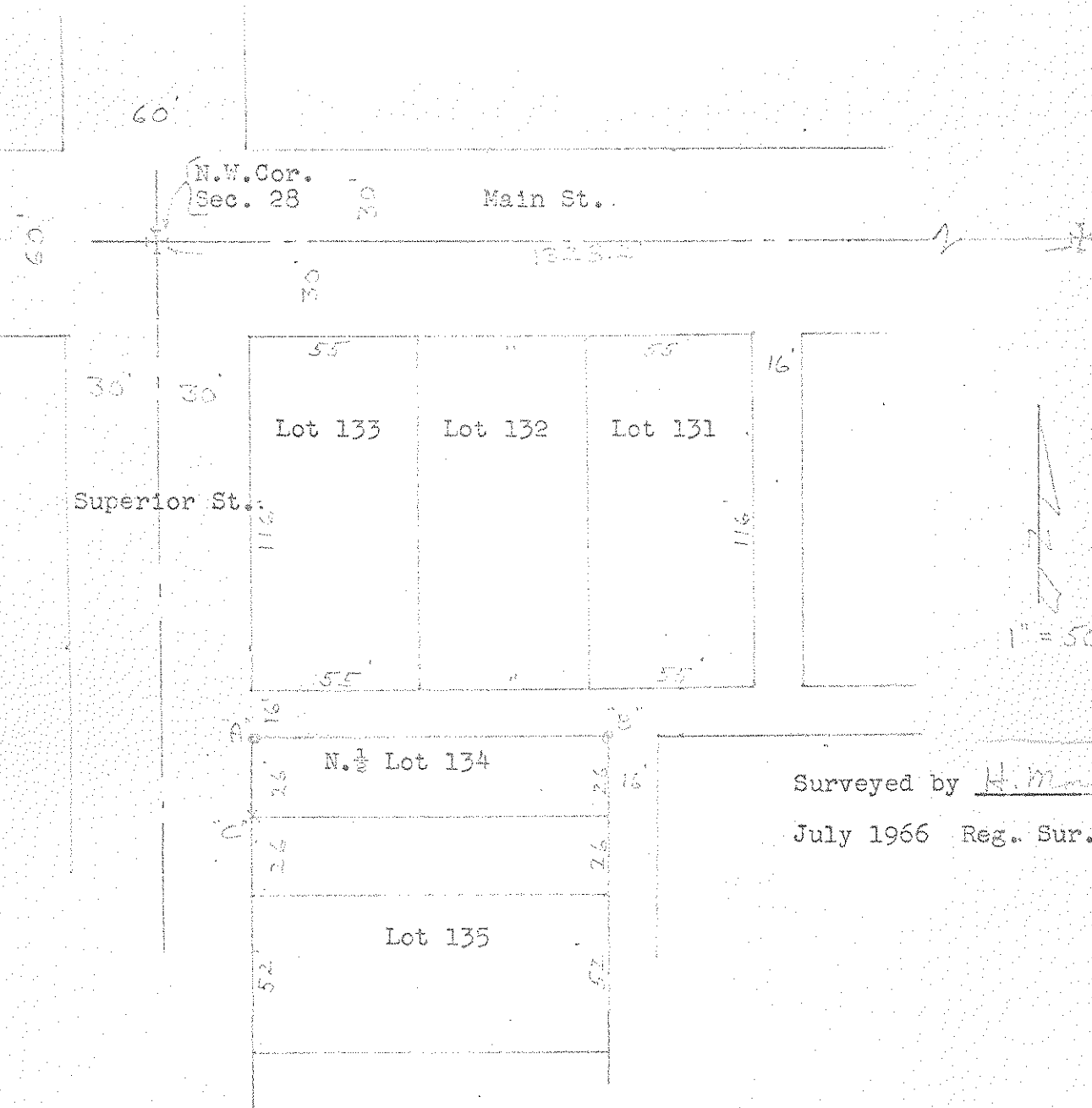
SURVEY
in
Custar, O.

ALSO
COPY

ALSO
COPY

Note- Village plats show a depth of 120' for Lots 131-133.
Original Plat (Vol..4, Page 52) show depth of 116'.

Control points shown thus *
Railroad Spk. set at point "A"
Iron pipe " " " " "B"
Cross cut in walk at " " "C"



Surveyed by H. Morgan
July 1966 Reg. Sur. 890

316
MILTON