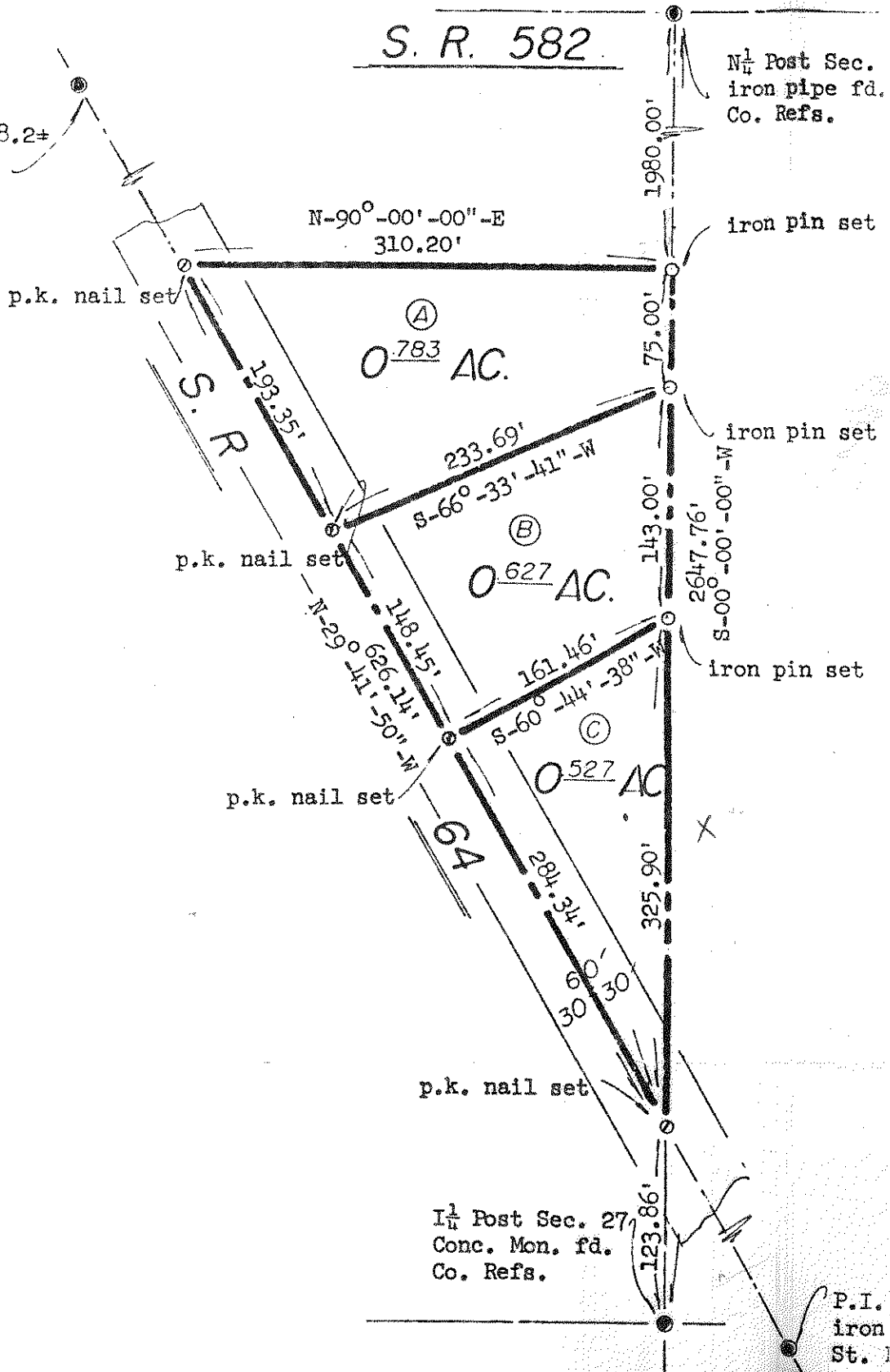


39-00704-00
 610-2700-00-012.000

658
 HASKINS

P.I. Sta. 102+58.2+
 r.r. spike fd.
 St. Refs.



S. R. 582

N $\frac{1}{4}$ Post Sec.
 iron pipe fd.
 Co. Refs.

N-90°-00'-00"-E
 310.20'

iron pin set

p.k. nail set

(A)
 0.783 AC.

1980.00'

p.k. nail set

233.69'
 S-66°-33'-41"-W

iron pin set

75.00'

(B)
 0.627 AC.

143.00'

p.k. nail set

161.46'
 S-60°-44'-38"-W

iron pin set

2647.76'

(C)
 0.527 AC.

325.90'

p.k. nail set

148.15'
 N-05°-17'-50"-W

123.86'

141.929'

60.30'

281.34'

30

30

117.65'

141.929'

148.15'

193.35'

118.15'

141.929'

148.15'

193.35'

118.15'

141.929'

148.15'

193.35'

118.15'

141.929'

148.15'

193.35'

118.15'

141.929'

148.15'

193.35'

118.15'

141.929'

148.15'

193.35'

118.15'

141.929'

148.15'

193.35'

118.15'

141.929'

148.15'

193.35'

118.15'

141.929'

148.15'

193.35'

118.15'

141.929'

148.15'

193.35'

118.15'

141.929'

148.15'

193.35'

118.15'

141.929'

148.15'

193.35'

118.15'

141.929'

148.15'

193.35'

118.15'

141.929'

148.15'

193.35'

118.15'

141.929'

148.15'

193.35'

118.15'

141.929'

148.15'

193.35'

118.15'

141.929'

148.15'

193.35'

118.15'

141.929'

148.15'

193.35'

118.15'

141.929'

148.15'

193.35'

118.15'

141.929'

148.15'

193.35'

118.15'

141.929'

148.15'

193.35'

118.15'

141.929'

148.15'

193.35'

118.15'

141.929'

148.15'

193.35'

118.15'

141.929'

148.15'

193.35'

118.15'

141.929'

148.15'

193.35'

118.15'

141.929'

148.15'

193.35'

118.15'

141.929'

148.15'

193.35'

118.15'

141.929'

148.15'

193.35'

118.15'

141.929'

148.15'

193.35'

118.15'

141.929'

148.15'

193.35'

118.15'

141.929'

148.15'

193.35'

118.15'

141.929'

148.15'

193.35'

118.15'

141.929'

148.15'

193.35'

118.15'

141.929'

148.15'

193.35'

118.15'

141.929'

148.15'

193.35'

118.15'

141.929'

148.15'

193.35'

118.15'

141.929'

148.15'

193.35'

118.15'

141.929'

148.15'

193.35'

118.15'

141.929'

148.15'

193.35'

118.15'

141.929'

148.15'

193.35'

118.15'

141.929'

148.15'

193.35'

118.15'

141.929'

148.15'

193.35'

118.15'

141.929'

148.15'

193.35'

118.15'

141.929'

148.15'

193.35'

118.15'

141.929'

148.15'

193.35'

118.15'

141.929'

148.15'

193.35'

118.15'

141.929'

148.15'

193.35'

118.15'

141.929'

148.15'

193.35'

118.15'

141.929'

148.15'

193.35'

118.15'

141.929'

148.15'

193.35'

118.15'

141.929'

148.15'

193.35'

118.15'

141.929'

148.15'

193.35'

118.15'

141.929'

148.15'

193.35'

118.15'

141.929'

148.15'

193.35'

118.15'

141.929'

148.15'

193.35'

118.15'

141.929'

148.15'

193.35'

118.15'

141.929'

148.15'

193.35'

118.15'

141.929'

148.15'

193.35'

118.15'

141.929'

148.15'

193.35'

118.15'

141.929'

148.15'

193.35'

118.15'

141.929'

148.15'