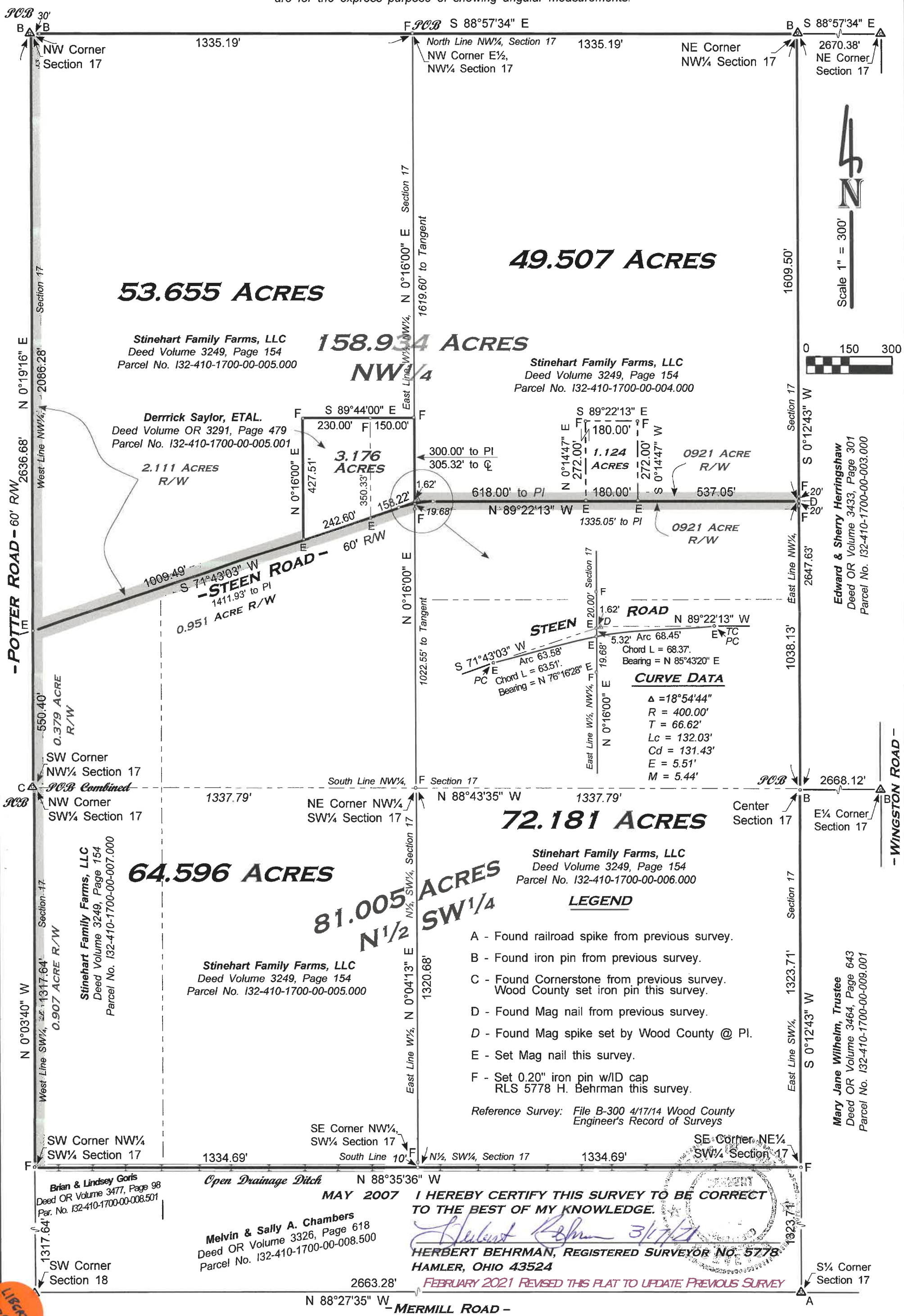


**PLAT OF THE NORTHWEST QUARTER (1/4) AND THE NORTH HALF (1/2)
OF THE SOUTHWEST QUARTER (1/4) OF SECTION 17, T 4 N, R 10 E,
LIBERTY TOWNSHIP, WOOD COUNTY, OHIO.**

"Bearings used hereon are based on an assumed meridian and
are for the express purpose of showing angular measurements."

163
3/1
1/2021



53.655 ACRES

49.507 ACRES

158.934 ACRES
NW 1/4

72.181 ACRES

64.596 ACRES

81.005 ACRES
N 1/2 SW 1/4

LEGEND

- A - Found railroad spike from previous survey.
 - B - Found iron pin from previous survey.
 - C - Found Cornerstone from previous survey. Wood County set iron pin this survey.
 - D - Found Mag nail from previous survey.
 - D - Found Mag spike set by Wood County @ PI.
 - E - Set Mag nail this survey.
 - F - Set 0.20" iron pin w/ID cap RLS 5778 H. Behrman this survey.
- Reference Survey: File B-300 4/17/14 Wood County Engineer's Record of Surveys

CURVE DATA

Δ =	18°54'44"
R =	400.00'
T =	66.62'
Lc =	132.03'
Cd =	131.43'
E =	5.51'
M =	5.44'

**MAY 2007 I HEREBY CERTIFY THIS SURVEY TO BE CORRECT
TO THE BEST OF MY KNOWLEDGE.**

Herbert Behrman 3/17/21
**HERBERT BEHRMAN, REGISTERED SURVEYOR No. 5778
HAMLER, OHIO 43524**

FEBRUARY 2021 REVISED THIS PLAT TO UPDATE PREVIOUS SURVEY



Scale 1" = 300'



Edward & Sherry Herringshaw
Deed OR Volume 3433, Page 301
Parcel No. 132-410-1700-00-003.000

Mary Jane Wilhelm, Trustee
Deed OR Volume 3464, Page 643
Parcel No. 132-410-1700-00-009.001

Brian & Lindsey Goris
Deed OR Volume 3477, Page 98
Par. No. 132-410-1700-00-008.501

Melvin & Sally A. Chambers
Deed OR Volume 3326, Page 618
Parcel No. 132-410-1700-00-008.500

Stinehart Family Farms, LLC
Deed Volume 3249, Page 154
Parcel No. 132-410-1700-00-005.000

Stinehart Family Farms, LLC
Deed Volume 3249, Page 154
Parcel No. 132-410-1700-00-004.000

Derrick Saylor, ETAL.
Deed Volume OR 3291, Page 479
Parcel No. 132-410-1700-00-005.001

2.111 ACRES R/W

3.176 ACRES

1.124 ACRES

0921 ACRE R/W

0921 ACRE R/W

STEEN ROAD - 60' R/W
S 71°43'03" W
1411.93' to PI
0.951 ACRE R/W

STEEN ROAD
S 71°43'03" W
Arc 63.58'
Chord L = 63.51'
Bearing = N 76°16'28" E
PC

STEEN ROAD
N 89°22'13" W
5.32' Arc 68.45'
Chord L = 68.37'
Bearing = N 85°43'20" E
E TC
PC

PCB
30'
NW Corner Section 17

PCB S 88°57'34" E
North Line NW 1/4, Section 17
NW Corner E 1/2, NW 1/4 Section 17

PCB S 88°57'34" E
NE Corner NW 1/4 Section 17
2670.38' NE Corner Section 17

- POTTER ROAD - 60' R/W -
N 0°19'16" E
2636.68'

- WINGSTON ROAD -

PCB Combined
SW Corner NW 1/4 Section 17
NW Corner SW 1/4 Section 17

PCB
South Line NW 1/4, Section 17
NE Corner NW 1/4 SW 1/4 Section 17

PCB
Center Section 17
E 1/4 Corner Section 17

SW Corner NW 1/4 SW 1/4 Section 17

SE Corner NW 1/4 SW 1/4 Section 17
N 88°35'36" W
1334.69'

SE Corner NE 1/4 SW 1/4 Section 17
1334.69'

Open Drainage Ditch
N 88°35'36" W
1334.69'

SW Corner Section 18

S 1/4 Corner Section 17

- MERRILL ROAD -
N 88°27'35" W
2663.28'

LIBERTY
391