

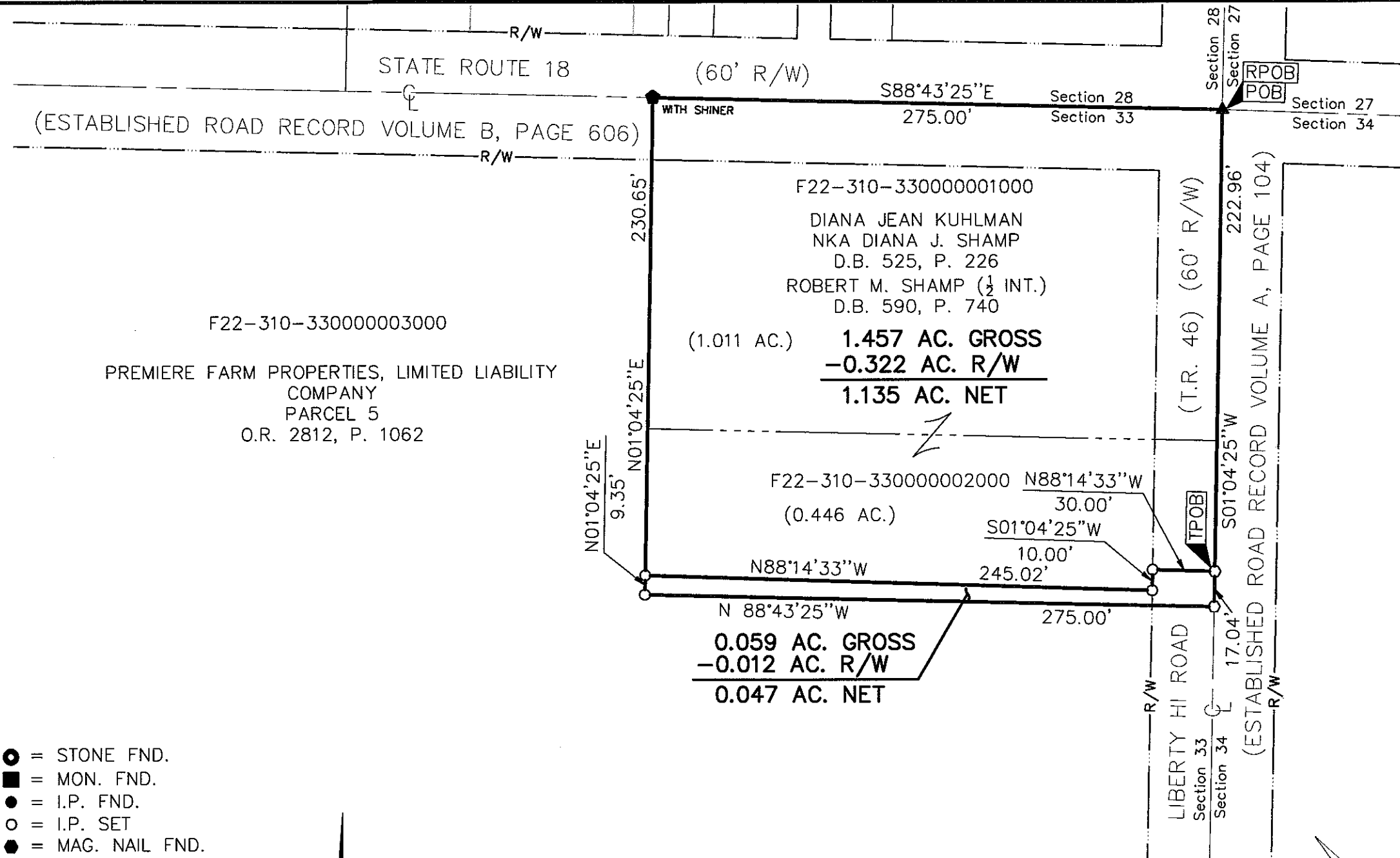
Henry A 526

SURVEY OF ACREAGE PARCELS

NORTHEAST QUARTER OF SECTION 33, TOWNSHIP 3, RANGE 10
NORTH AND EAST OF THE FIRST PRINCIPLE MERIDIAN
TOWNSHIP OF HENRY, COUNTY OF WOOD, STATE OF OHIO

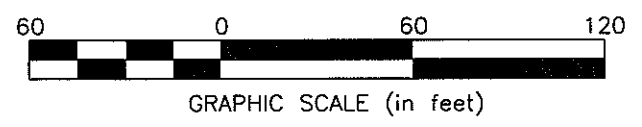
Date: January 27, 2010
Scale: 1" = 60'
Job No: 2009-1333

EMHT
Evans, Mechwart, Hambleton & Tilton, Inc.
Engineers • Surveyors • Planners • Scientists
5500 New Albany Road, Columbus, OH 43054
Phone: 614.775.4500 Toll Free: 888.775.3648
emht.com




- = STONE FND.
- = MON. FND.
- = I.P. FND.
- = I.P. SET
- = MAG. NAIL FND.
- = MAG. NAIL SET
- ▲ = R.R. SPK. FND.
- △ = R.R. SPK. SET
- = P.K. NAIL FND.

I.P. Set are 13/16" I.D. iron pipe with cap inscribed EMHT INC



BASIS OF BEARINGS:
The bearings shown on this plat are based on UTM Coordinate System, 17 NORTH, NAD83(2007). Said bearings originated from a field traverse which was tied (referenced) to said coordinate system by GPS observations and observations of selected NGS monuments P9A, P3, and P3A. The portion of the centerline of State Route 18, having a bearing of South 87° 49' 43" East and monumented as shown hereon, is designated the "basis of bearing" for this survey.

By  Professional Surveyor No. 8250
Edward J. Miller, P.S. Date 2/3/10

J:\20091333\20091333SV_GROUND\DWG\91333BV5.DWG plotted by MEYER, JOSH on 2/3/2010 7:22:10 AM last saved by JMEYER on 1/27/2010 9:24:18 AM Xrefs: 20091333PHOTO.DWG

Henry A 526