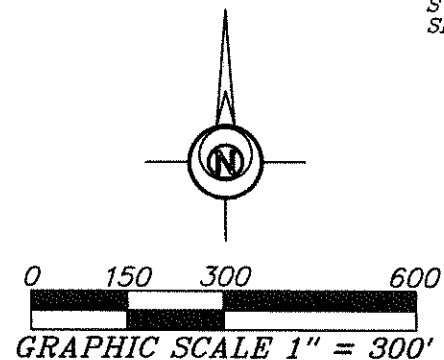
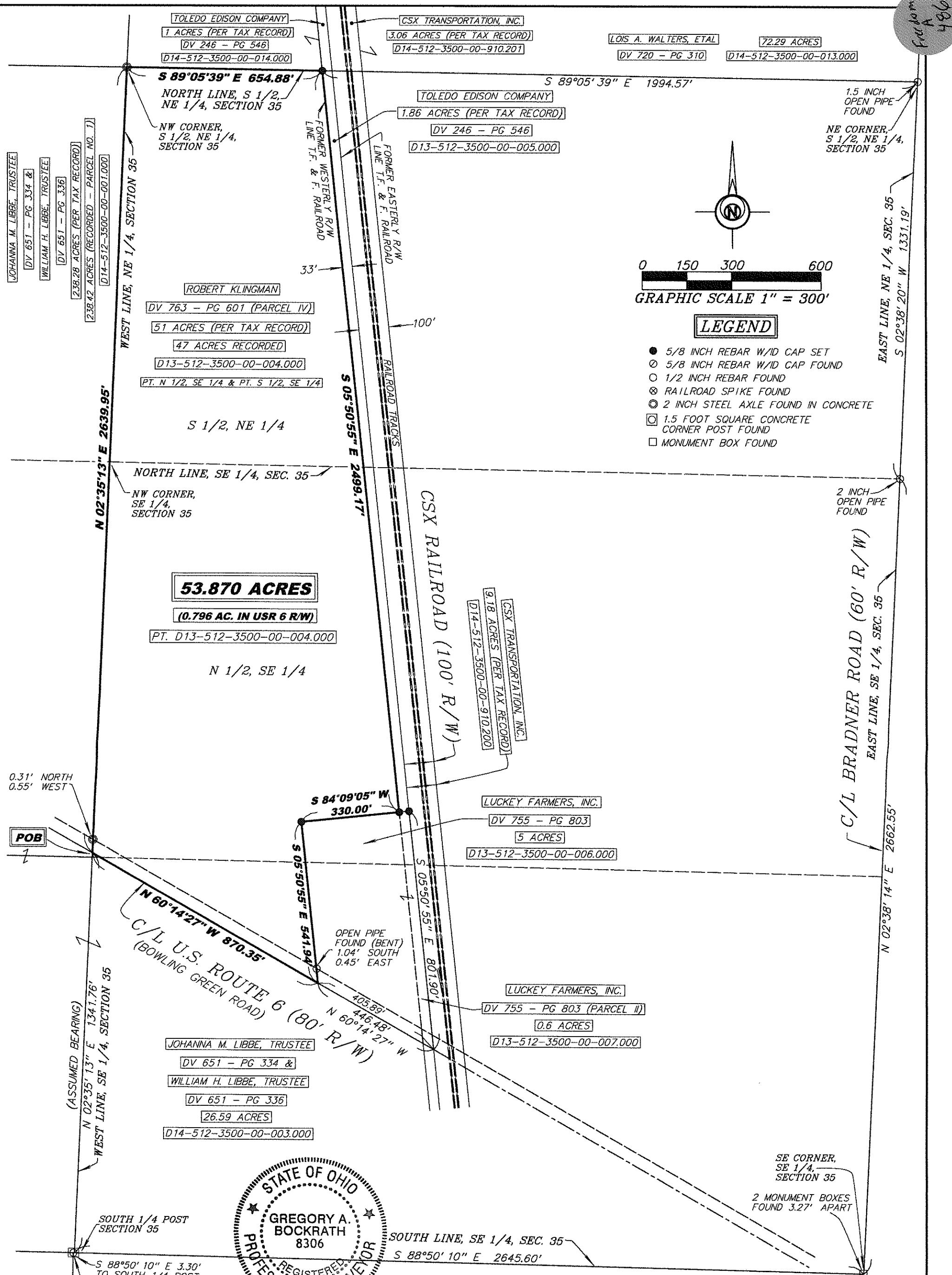


File No. 486



**LEGEND**

- 5/8 INCH REBAR W/ID CAP SET
- 5/8 INCH REBAR W/ID CAP FOUND
- 1/2 INCH REBAR FOUND
- ⊗ RAILROAD SPIKE FOUND
- ⊙ 2 INCH STEEL AXLE FOUND IN CONCRETE
- 1.5 FOOT SQUARE CONCRETE CORNER POST FOUND
- MONUMENT BOX FOUND



I HEREBY CERTIFY THIS TO BE A SURVEY MADE UNDER MY SUPERVISION AND THAT THE MONUMENTS ARE FOUND AND/OR SET AS INDICATED.

9-17-12  
Date

*Gregory A. Bockrath*  
Gregory A. Bockrath, P.S.  
Registered Surveyor No. 8306.  
115 S. Fair Avenue, Suite A  
Ottawa, Ohio 45875

**SURVEY FOR:**  
LUCKEY FARMERS  
PART OF THE S 1/2 OF THE NE 1/4 & PART OF THE N 1/2 OF THE SE 1/4 OF SECTION 35, T5N - R12E, FREEDOM TOWNSHIP, WOOD COUNTY, OHIO

**Bockrath & Associates**  
Engineering and Surveying, LLC  
115 S. Fair Avenue, Suite A - Ottawa - Ohio  
Phone: 419.523.5789

THIS SURVEY WAS PERFORMED WITHOUT THE BENEFIT OF A TITLE EXAMINATION. BEYOND THE DEED DOCUMENTS CITED ON THE SURVEY DRAWING THERE MAY BE RECORDED OR UNRECORDED EASEMENTS AND/OR ENCUMBRANCES BENEFITING OR ENCUMBERING THE SURVEYED PROPERTY WHICH ARE NOT SHOWN ON THIS DRAWING.

0.31' NORTH  
0.55' WEST

POB

(ASSUMED BEARING)

SOUTH 1/4 POST SECTION 35  
S 88°50' 10" E 3.30'  
TO SOUTH 1/4 POST SECTION 35  
NORTH 1/4 POST MONTGOMERY TWP SECTION 2

SE CORNER, SE 1/4, SECTION 35  
2 MONUMENT BOXES FOUND 3.27' APART

2 INCH OPEN PIPE FOUND

1.5 INCH OPEN PIPE FOUND  
NE CORNER, S 1/2, NE 1/4, SECTION 35

JOHANNA M. LIBBE, TRUSTEE  
DV 651 - PG 334 &  
WILLIAM H. LIBBE, TRUSTEE  
DV 651 - PG 336  
238.28 ACRES (PER TAX RECORD)  
238.42 ACRES (RECORDED - PARCEL NO. 7)  
D14-512-3500-00-001.000

ROBERT KLINGMAN  
DV 763 - PG 601 (PARCEL IV)  
51 ACRES (PER TAX RECORD)  
47 ACRES RECORDED  
D13-512-3500-00-004.000  
PT. N 1/2, SE 1/4 & PT. S 1/2, SE 1/4

NORTH LINE, SE 1/4, SEC. 35  
NW CORNER, SE 1/4, SECTION 35

**53.870 ACRES**  
(0.796 AC. IN USR 6 R/W)  
PT. D13-512-3500-00-004.000

JOHANNA M. LIBBE, TRUSTEE  
DV 651 - PG 334 &  
WILLIAM H. LIBBE, TRUSTEE  
DV 651 - PG 336  
26.59 ACRES  
D14-512-3500-00-003.000

CSX TRANSPORTATION, INC.  
3.06 ACRES (PER TAX RECORD)  
D14-512-3500-00-910.201

LOIS A. WALTERS, ETAL  
DV 720 - PG 310  
72.29 ACRES  
D14-512-3500-00-013.000

TOLEDO EDISON COMPANY  
1.86 ACRES (PER TAX RECORD)  
DV 246 - PG 546  
D13-512-3500-00-005.000

CSX TRANSPORTATION, INC.  
9.18 ACRES (PER TAX RECORD)  
D14-512-3500-00-910.200

LUCKEY FARMERS, INC.  
DV 755 - PG 803  
5 ACRES  
D13-512-3500-00-006.000

LUCKEY FARMERS, INC.  
DV 755 - PG 803 (PARCEL II)  
0.6 ACRES  
D13-512-3500-00-007.000

TOLEDO EDISON COMPANY  
1 ACRES (PER TAX RECORD)  
DV 246 - PG 546  
D14-512-3500-00-014.000

S 89°05'39" E 654.88'  
NORTH LINE, S 1/2, NE 1/4, SECTION 35  
NW CORNER, S 1/2, NE 1/4, SECTION 35

S 89°05' 39" E 1994.57'

33'  
100'

S 05°50'55" E 2499.17'

CSX RAILROAD (100' R/W)

C/L BRADNER ROAD (60' R/W)

EAST LINE, NE 1/4, SEC. 35  
S 02°38' 20" W 1331.19'

N 02°38' 14" E 2662.55'

S 84°09'05" W 330.00'

S 05°50'55" E 541.94'

OPEN PIPE FOUND (BENT)  
1.04' SOUTH  
0.45' EAST

S 05°50'55" E 801.90'

N 60°14'27" W 870.35'  
C/L U.S. ROUTE 6 (80' R/W)  
(BOWLING GREEN ROAD)

N 60°14' 27" W 405.89'  
446.48'

SOUTH LINE, SE 1/4, SEC. 35  
S 88°50' 10" E 2645.60'