

Center
A
437

SURVEY REFERENCES CENTER
TOWNSHIP; 111B, 347A, A308

NE CORNER,
NW 1/4,
SECTION 31

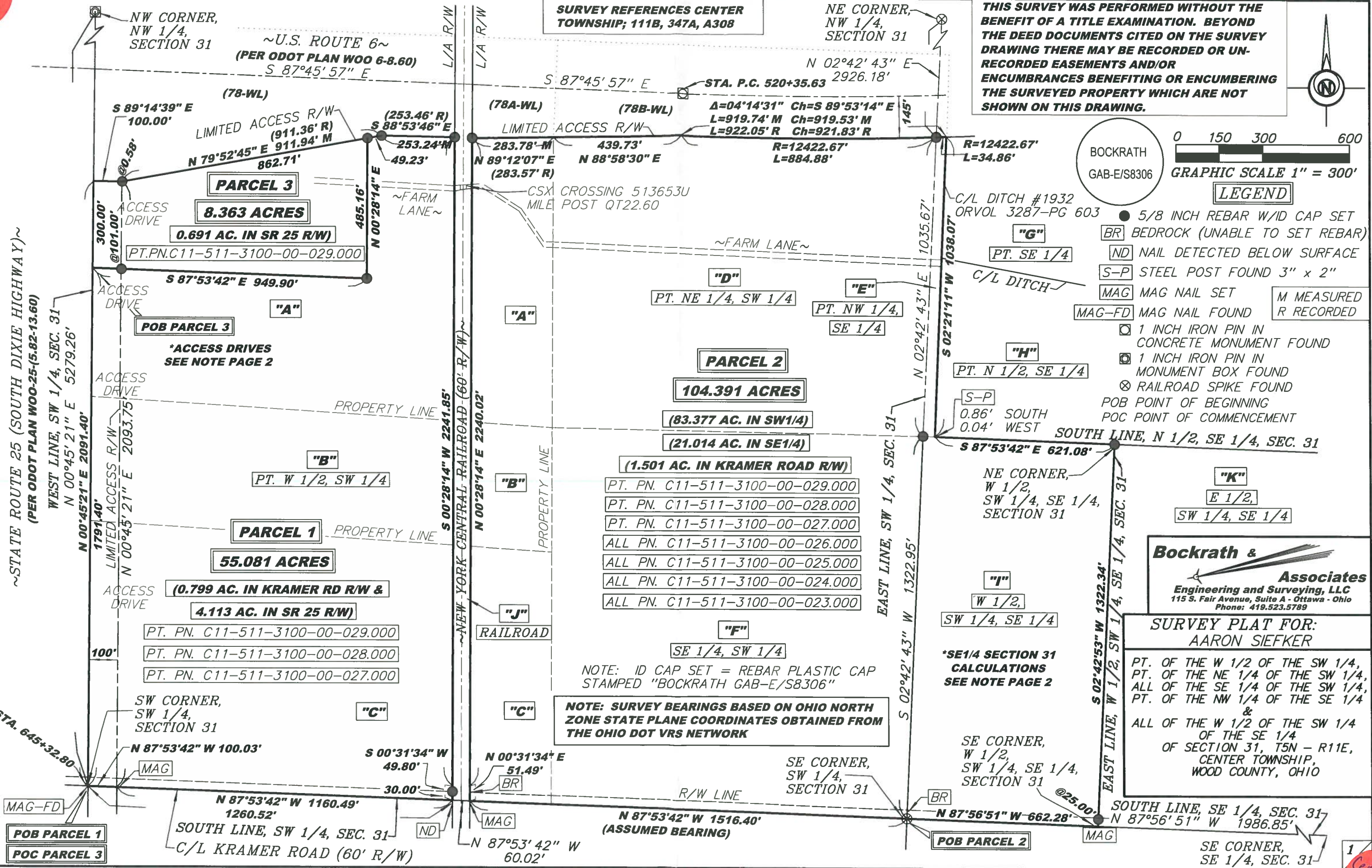
**THIS SURVEY WAS PERFORMED WITHOUT THE
BENEFIT OF A TITLE EXAMINATION. BEYOND
THE DEED DOCUMENTS CITED ON THE SURVEY
DRAWING THERE MAY BE RECORDED OR UN-
RECORDED EASEMENTS AND/OR
ENCUMBRANCES BENEFITING OR ENCUMBERING
THE SURVEYED PROPERTY WHICH ARE NOT
SHOWN ON THIS DRAWING.**



GRAPHIC SCALE 1" = 300'

LEGEND

- BOCKRATH GAB-E/S8306
- 5/8 INCH REBAR W/ID CAP SET
- BR BEDROCK (UNABLE TO SET REBAR)
- ND NAIL DETECTED BELOW SURFACE
- S-P STEEL POST FOUND 3" x 2"
- MAG MAG NAIL SET
- MAG-FD MAG NAIL FOUND
- M MEASURED
- R RECORDED
- ☐ 1 INCH IRON PIN IN CONCRETE MONUMENT FOUND
- ☐ 1 INCH IRON PIN IN MONUMENT BOX FOUND
- ⊗ RAILROAD SPIKE FOUND
- POB POINT OF BEGINNING
- POC POINT OF COMMENCEMENT



~STATE ROUTE 25 (SOUTH DIXIE HIGHWAY)~
(PER ODOT PLAN WOO-25-(5.82-13.60))

WEST LINE, SW 1/4, SEC. 31
N 00°45'21" E 5279.26'
N 00°45'21" E 2091.40'

LIMITED ACCESS R/W
N 00°45'21" E 2093.75'
N 00°45'21" E 2091.40'

ACCESS DRIVE
100'
PT. PN. C11-511-3100-00-029.000
PT. PN. C11-511-3100-00-028.000
PT. PN. C11-511-3100-00-027.000

PARCEL 1
55.081 ACRES

(0.799 AC. IN KRAMER RD R/W &
4.113 AC. IN SR 25 R/W)

SW CORNER,
SW 1/4,
SECTION 31

N 87°53'42" W 100.03'

N 87°53'42" W 1160.49'
1260.52'

SOUTH LINE, SW 1/4, SEC. 31
C/L KRAMER ROAD (60' R/W)

L/A R/W
L/A R/W
S 00°28'14" W 2241.85'
NEW YORK CENTRAL RAILROAD (60' R/W)
N 00°28'14" E 2240.02'

PROPERTY LINE
PROPERTY LINE
RAILROAD

**NOTE: SURVEY BEARINGS BASED ON OHIO NORTH
ZONE STATE PLANE COORDINATES OBTAINED FROM
THE OHIO DOT VRS NETWORK**

**NOTE: ID CAP SET = REBAR PLASTIC CAP
STAMPED "BOCKRATH GAB-E/S8306"**

PT. PN. C11-511-3100-00-029.000
PT. PN. C11-511-3100-00-028.000
PT. PN. C11-511-3100-00-027.000
ALL PN. C11-511-3100-00-026.000
ALL PN. C11-511-3100-00-025.000
ALL PN. C11-511-3100-00-024.000
ALL PN. C11-511-3100-00-023.000

PARCEL 2
104.391 ACRES

(83.377 AC. IN SW1/4)
(21.014 AC. IN SE1/4)
(1.501 AC. IN KRAMER ROAD R/W)

SE CORNER,
SW 1/4,
SECTION 31

N 87°53'42" W 1516.40'
(ASSUMED BEARING)

EAST LINE, SW 1/4, SEC. 31
S 02°42'43" W 1322.95'

***SE1/4 SECTION 31
CALCULATIONS
SEE NOTE PAGE 2**

SE CORNER,
W 1/2,
SW 1/4, SE 1/4,
SECTION 31

N 87°56'51" W 662.28'

EAST LINE, W 1/2, SW 1/4, SE 1/4, SEC. 31
S 02°42'53" W 1322.34'

SOUTH LINE, SE 1/4, SEC. 31
N 87°56'51" W 1986.85'

SE CORNER,
SE 1/4, SEC. 31

Bockrath & Associates
Engineering and Surveying, LLC
115 S. Fair Avenue, Suite A - Ottawa - Ohio
Phone: 419.523.5789

**SURVEY PLAT FOR:
AARON SIEFKER**

PT. OF THE W 1/2 OF THE SW 1/4,
PT. OF THE NE 1/4 OF THE SW 1/4,
ALL OF THE SE 1/4 OF THE SW 1/4,
PT. OF THE NW 1/4 OF THE SE 1/4
&
ALL OF THE W 1/2 OF THE SW 1/4
OF THE SE 1/4
OF SECTION 31, T5N - R11E,
CENTER TOWNSHIP,
WOOD COUNTY, OHIO

Center
A
437

Center
A
437

OWNER INFORMATION

"A"

LINDA L. CRAWFORD TRUSTEE, ETAL
OR VOL 3534 - PG 46 (PARCEL III)
24.15 AC. (PER TAX RECORD)
PN. C11-511-3100-00-029.000
PT. W 1/2, SW 1/4

"B"

LINDA L. CRAWFORD TRUSTEE, ETAL
OR VOL 3534 - PG 46 (PARCEL II)
13.04 AC. (PER TAX RECORD)
PN. C11-511-3100-00-028.000
PT. W 1/2, SW 1/4

"C"

LINDA L. CRAWFORD TRUSTEE, ETAL
OR VOL 3534 - PG 46 (PARCEL I)
25.92 AC. (PER TAX RECORD)
PN. C11-511-3100-00-027.000
PT. W 1/2, SW 1/4

"D"

LINDA L. CRAWFORD TRUSTEE, ETAL
OR VOL 3534 - PG 46 (PARCEL VII)
30.3 AC. (PER TAX RECORD)
PN. C11-511-3100-00-026.000
PT. NE 1/4, SW 1/4

"E"

LINDA L. CRAWFORD TRUSTEE, ETAL
OR VOL 3534 - PG 46 (PARCEL VI)
1 AC. (RECORDED)
PN. C11-511-3100-00-025.000
PT. NW 1/4, SE 1/4

"F"

LINDA L. CRAWFORD TRUSTEE, ETAL
OR VOL 3534 - PG 46 (PARCEL V)
40 AC. (RECORDED)
PN. C11-511-3100-00-024.000
SE 1/4, SW 1/4

"G"

CURTIS V. DAVIS, JR.
OR VOL 3287 - PG 603 (LEGAL DESCRIPTION C)
5.86 AC. (RECORDED)
PN. C11-511-3100-00-008.000
PT. SE 1/4

"H"

ROBERT T. ZIEGLER, TRUSTEE
OR VOL 3264 - PG 318 (PARCEL NO. 2)
11.858 AC. (RECORDED)
PN. C11-511-3100-00-018.001
PT. N 1/2, SE 1/4

"I"

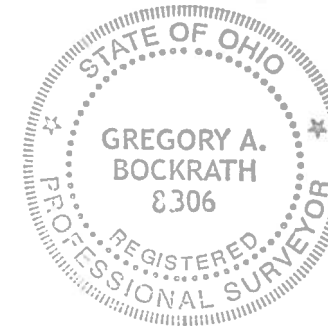
LINDA L. CRAWFORD TRUSTEE, ETAL
OR VOL 3534 - PG 46 (PARCEL IV)
20 AC. (RECORDED)
PN. C11-511-3100-00-023.000
W 1/2, SW 1/4, SE 1/4

"J"

NEW YORK CENTRAL LINES, LLC
DV 763 - PG 432
3.64 AC. (PER TAX RECORD)
PN. C11-511-3100-00-920.200
PT. W 1/2, SW 1/4

"K"

FRANKLIN M. KNAUSS, JR. & CONNIE R. KNAUSS, TRUSTEES
OR VOL 2750 - PG 673 (PARCEL 1)
20 AC. (PER TAX RECORD)
PN. C11-511-3100-00-022.000
E 1/2, SW 1/4, SE 1/4



I HEREBY CERTIFY THIS TO BE A SURVEY MADE UNDER MY SUPERVISION AND THAT THE MONUMENTS ARE FOUND AND/OR SET AS INDICATED.

7-13-18
Date

Gregory A. Bockrath P.S.
Registered Surveyor No. 8306.
115 S. Fair Avenue, Suite A
Ottawa, Ohio 45875
419-523-5789

ACCESS DRIVE NOTES:

- STA. 651+90.3, 25' WIDE, UNIMPROVED
- STA. 659+06.5, 25' WIDE, UNIMPROVED
- STA. 662+55.6, 26' WIDE, UNIMPROVED
- STA. 665+20.5, 33' WIDE, 10' ASPHALT

SE1/4 NOTE:

- NW CORNER, HELD NORTH R/W OF U.S. ROUTE 6 AT THE NORTH-SOUTH CL OF SEC. PER THE REFERENCED U.S. ROUTE 6 PLANS.
- NE CORNER, STONE FOUND (UNDISTURBED, 16" DEEP, 6"x10") BY WCE REFS.
- SE CORNER, WCE HAS SEARCHED FOR THIS CORNER AND DID NOT FIND A MONUMENT. HELD THE PK NAIL AT THE NE CORNER OF SECTION 6 FOR LINE AND 141.24' OFFSET.
- SW CORNER, RR SPIKE FD. BY WCE REFS.

SURVEY PLAT FOR:

AARON SIEFKER

PT. OF THE W 1/2 OF THE SW 1/4,
PT. OF THE NE 1/4 OF THE SW 1/4,
ALL OF THE SE 1/4 OF THE SW 1/4,
PT. OF THE NW 1/4 OF THE SE 1/4
&
ALL OF THE W 1/2 OF THE SW 1/4
OF THE SE 1/4
OF SECTION 31, T5N - R11E,
CENTER TOWNSHIP,
WOOD COUNTY, OHIO

Bockrath & Associates
Engineering and Surveying, LLC
115 S. Fair Avenue, Suite A - Ottawa - Ohio
Phone: 419.523.5789

Center
A
437