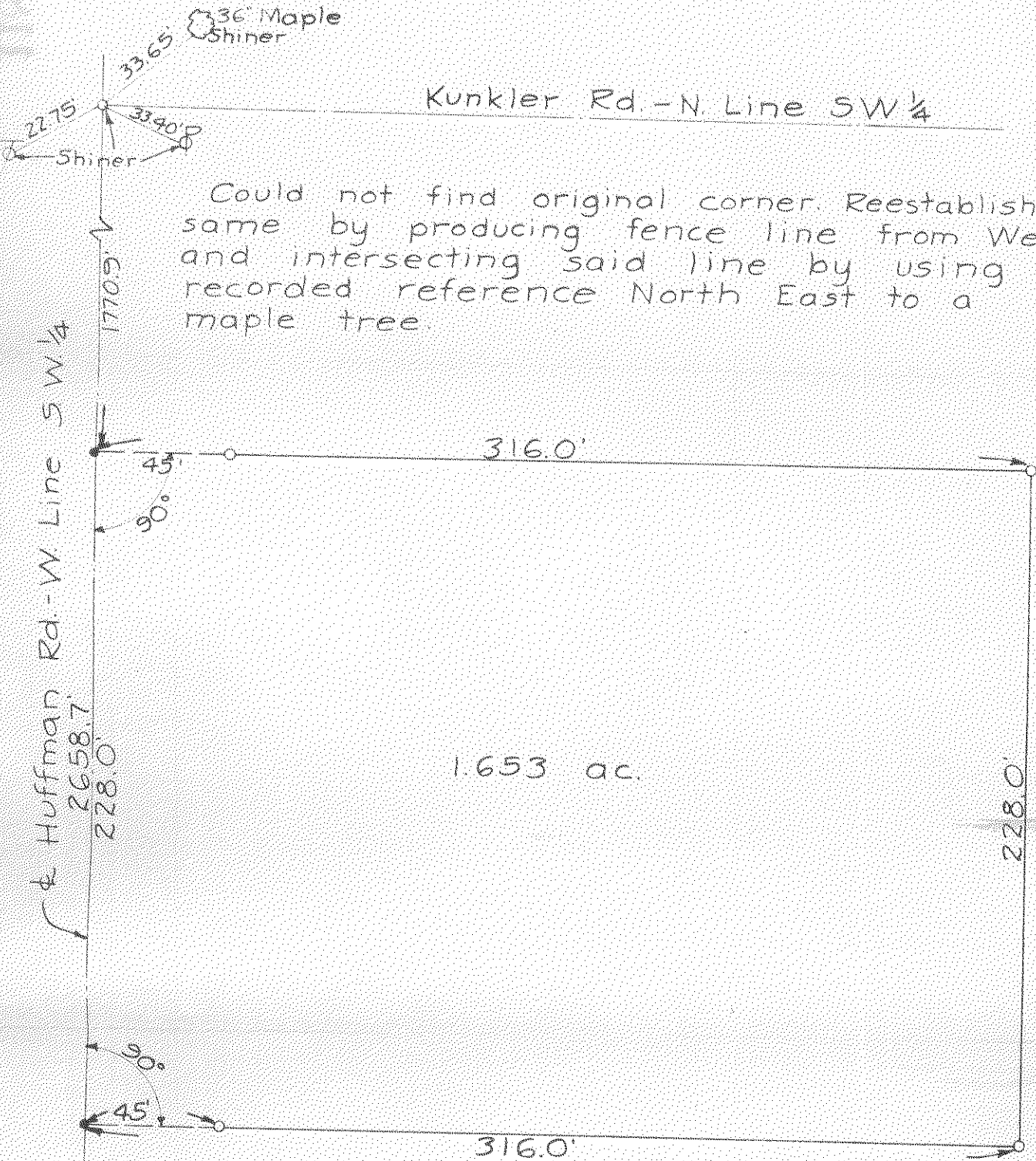


4173
Bloom

Survey
in
W 1/2 SW 1/4 Sec. 22 Bloom Twp
Wood County, Ohio
Louise Barnhisel-Grantor
Leo Mc Grain-Grantee



Could not find original corner. Reestablished same by producing fence line from West and intersecting said line by using recorded reference North East to a maple tree

1.653 ac.

1"=50'

Iron pipe set at points shown thus ○

R.R. Spikes set at points shown thus ●

Dimensions given in feet and decimals thereof.

Surveyed by H. P. ...
April 1960 Reg. Sur. 890

4173
Bloom

Huffman Rd. - W. Line SW 1/4
2658.7'
228.0'

1770.9'

316.0'

228.0'

316.0'

88°

N. End Bridge Accepted & bridge for Sec Line

336' Maple Shiner

Kunkler Rd. - N. Line SW 1/4

Shiner

45°
90°

90°

45°