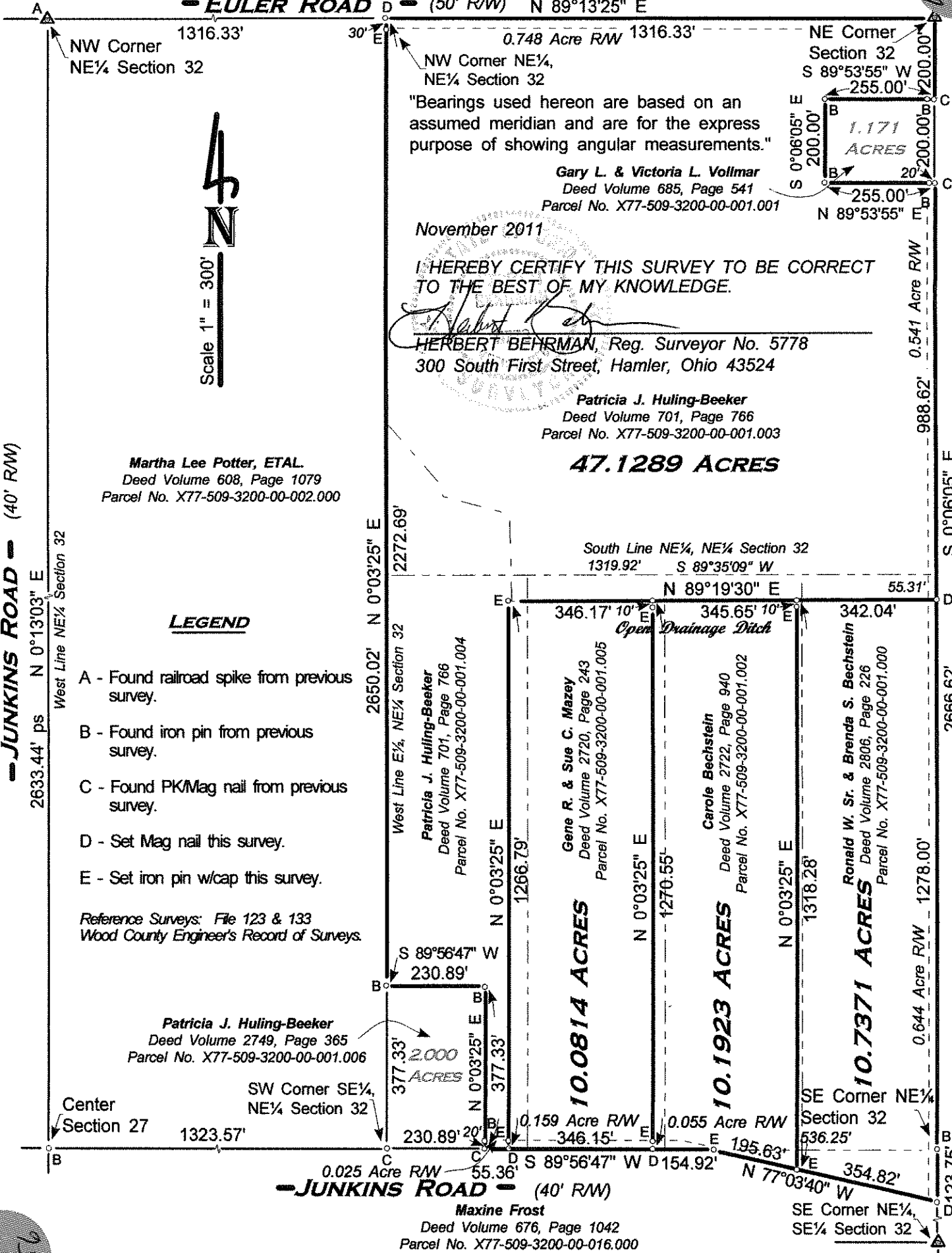


SURVEY OF PART OF THE EAST HALF (1/2) OF THE EAST HALF (1/2) OF SECTION 32, T 5 N, R 9 E, WESTON TOWNSHIP, WOOD COUNTY, OHIO.

- EULER ROAD - (50' RW) N 89°13'25" E



Martha Lee Potter, ETAL
Deed Volume 608, Page 1079
Parcel No. X77-509-3200-00-002.000

"Bearings used hereon are based on an assumed meridian and are for the express purpose of showing angular measurements."

Gary L. & Victoria L. Vollmar
Deed Volume 685, Page 541
Parcel No. X77-509-3200-00-001.001

November 2011

I HEREBY CERTIFY THIS SURVEY TO BE CORRECT TO THE BEST OF MY KNOWLEDGE.

HERBERT BEHRMAN, Reg. Surveyor No. 5778
300 South First Street, Hamler, Ohio 43524

Patricia J. Huling-Beeker
Deed Volume 701, Page 766
Parcel No. X77-509-3200-00-001.003

47.1289 ACRES

LEGEND

- A - Found railroad spike from previous survey.
- B - Found iron pin from previous survey.
- C - Found PK/Mag nail from previous survey.
- D - Set Mag nail this survey.
- E - Set iron pin w/cap this survey.

Reference Surveys: File 123 & 133
Wood County Engineer's Record of Surveys.

Patricia J. Huling-Beeker
Deed Volume 2749, Page 365
Parcel No. X77-509-3200-00-001.006

Patricia J. Huling-Beeker
Deed Volume 701, Page 766
Parcel No. X77-509-3200-00-001.004

Gene R. & Sue C. Mazey
Deed Volume 2720, Page 243
Parcel No. X77-509-3200-00-001.005

Carole Bechstein
Deed Volume 2722, Page 940
Parcel No. X77-509-3200-00-001.002

Ronald W. Sr. & Brenda S. Bechstein
Deed Volume 2806, Page 226
Parcel No. X77-509-3200-00-001.000

West Line E 1/2, NE 1/4 Section 32

West Line NE 1/4 Section 32

West Line E 1/2, NE 1/4 Section 32

West Line NE 1/4 Section 32

West Line E 1/2, NE 1/4 Section 32

West Line NE 1/4 Section 32

West Line E 1/2, NE 1/4 Section 32

West Line NE 1/4 Section 32

West Line E 1/2, NE 1/4 Section 32

West Line NE 1/4 Section 32

West Line E 1/2, NE 1/4 Section 32

West Line NE 1/4 Section 32

West Line E 1/2, NE 1/4 Section 32

West Line NE 1/4 Section 32

West Line E 1/2, NE 1/4 Section 32

West Line NE 1/4 Section 32

West Line E 1/2, NE 1/4 Section 32

West Line NE 1/4 Section 32

West Line E 1/2, NE 1/4 Section 32

West Line NE 1/4 Section 32

West Line E 1/2, NE 1/4 Section 32

West Line NE 1/4 Section 32

West Line E 1/2, NE 1/4 Section 32

West Line NE 1/4 Section 32

West Line E 1/2, NE 1/4 Section 32

West Line NE 1/4 Section 32

West Line E 1/2, NE 1/4 Section 32

West Line NE 1/4 Section 32

West Line E 1/2, NE 1/4 Section 32

West Line NE 1/4 Section 32

- JUNKINS ROAD - (40' RW)

Maxine Frost
Deed Volume 676, Page 1042
Parcel No. X77-509-3200-00-016.000

SE Corner NE 1/4, SE 1/4 Section 32

Wilson B 256

Wilson B 256