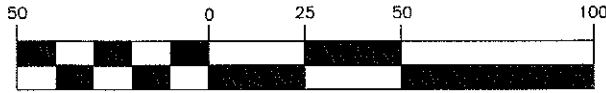


Weston  
A  
238

# Survey For Bud Brown

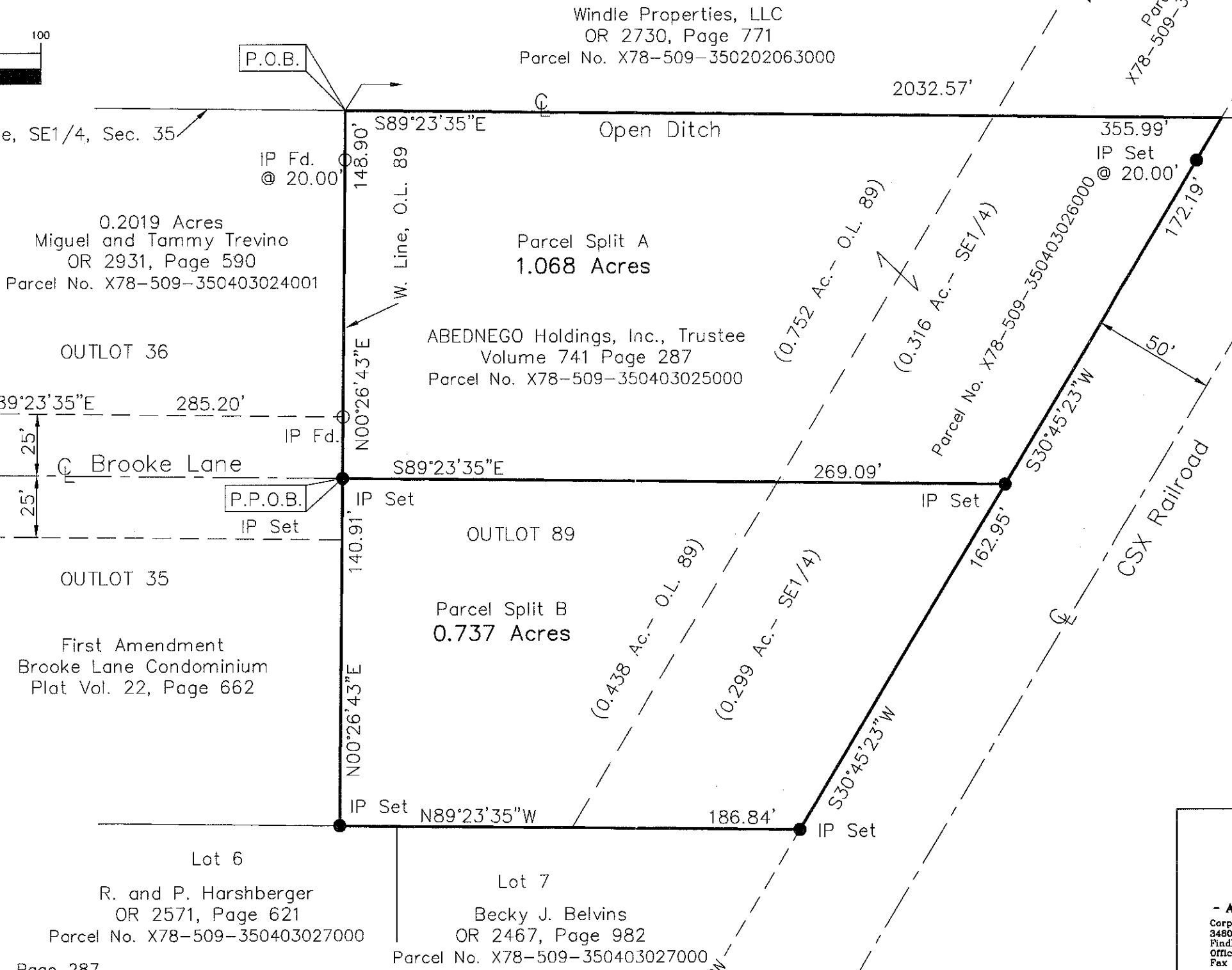
Being part of Outlot No. 89, together with part of the SE1/4 of  
Section 35, T5N, R9E, Village of Weston, Wood County, Ohio

## GRAPHIC SCALE



( IN FEET )  
1 inch = 50 ft.

Washington Street  
R/W



Date: 6-2-2010

*Nick E. Nigh*  
 Nick E. Nigh, P.S. #47284  
 Peterman Associates, Inc.  
 3480 N. Main Street  
 Findlay, Ohio 45840

**PETERMAN ASSOCIATES, INC.**  
 - ARCHITECTS - ENGINEERS - SURVEYORS -  
 Corporate Office  
 3480 N. Main Street  
 Findlay, Ohio 45840  
 Office (419)422-8872  
 Fax (419)422-8466

Wood County Deed Records: Vol. 741, Page 287

Note: The bearings on this plat are based upon an assumed meridian and are used only for the purpose of describing angular measurements.

IP Set = 5/8"x30" rebar with Peterman Associates Cap.

Brown Meadows  
Replat of Lots 144, 145 & Pt. 90  
Plat Vol. 21, Page 530

Weston  
A  
238