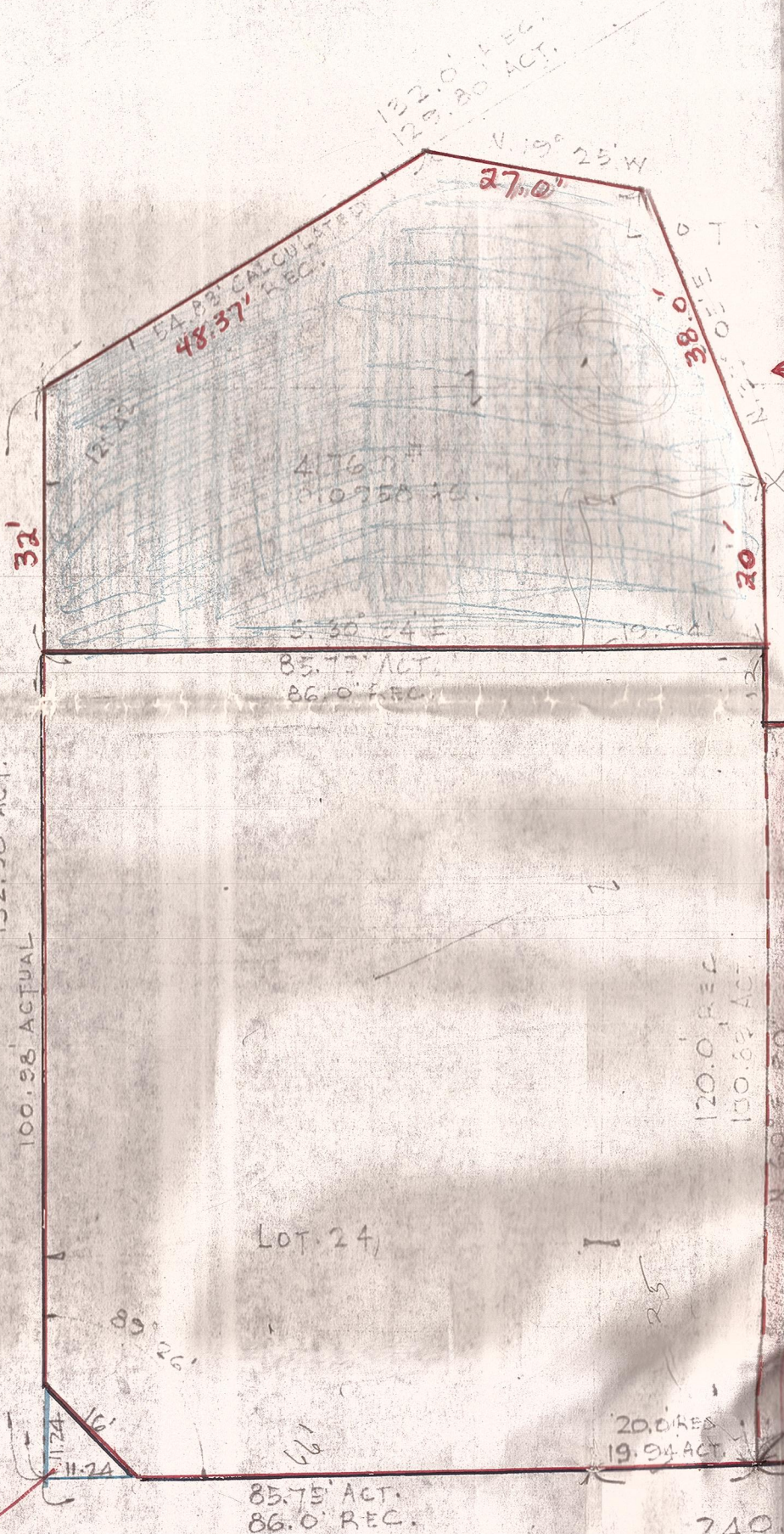


294
WESTON

WALNUT ST. 66'
N. 61° 42' W



Traded this parcel

For this parcel

CHERRY ST. 66'
S. 60° W

Portion Sold to
Village of Weston
Warranty Deed # 934
(2361)
Sept 18, 1922

MAIN ST. 80'
S. 30° 34' E

"A"

THE STANDARD
PLAT OF SURV
LOT NOS 24 PART
VILLAGE OF WE
WOOD COURT

294
WESTON