

Troy  
A  
629

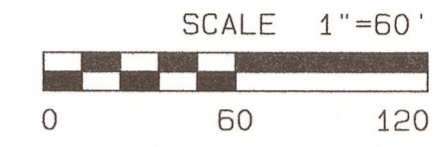
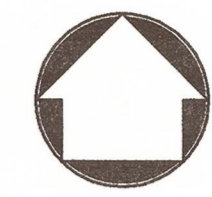
SURVEY REPORT OF PART OF  
THE NE 1/4, SEC. 12, T6N.  
R12E, TROY TWP  
WOOD CO. OHIO

BRAD HICKMAN  
U69-612-1200-00-001-001  
OR2524 PG0209&0210

MARK SIMMONS  
U69-612-1200-00-001-002  
OR2165PG0746&0747

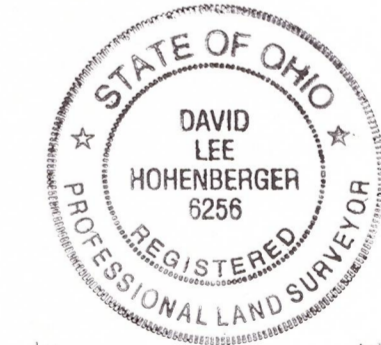
MARK SIMMONS  
U69-612-1200-00-001-003  
OR2068PG0546&0547

MARK A. SCHULTE  
U69-612-1200-00-007-000  
OR3039PG0783&0784



BASIS OF BEARINGS  
PRIOR SURVEY  
#6121202-0502

Symbol	Description
⊗	IP FND
⊕	IP W/CAP SET
⊗	MON. FND



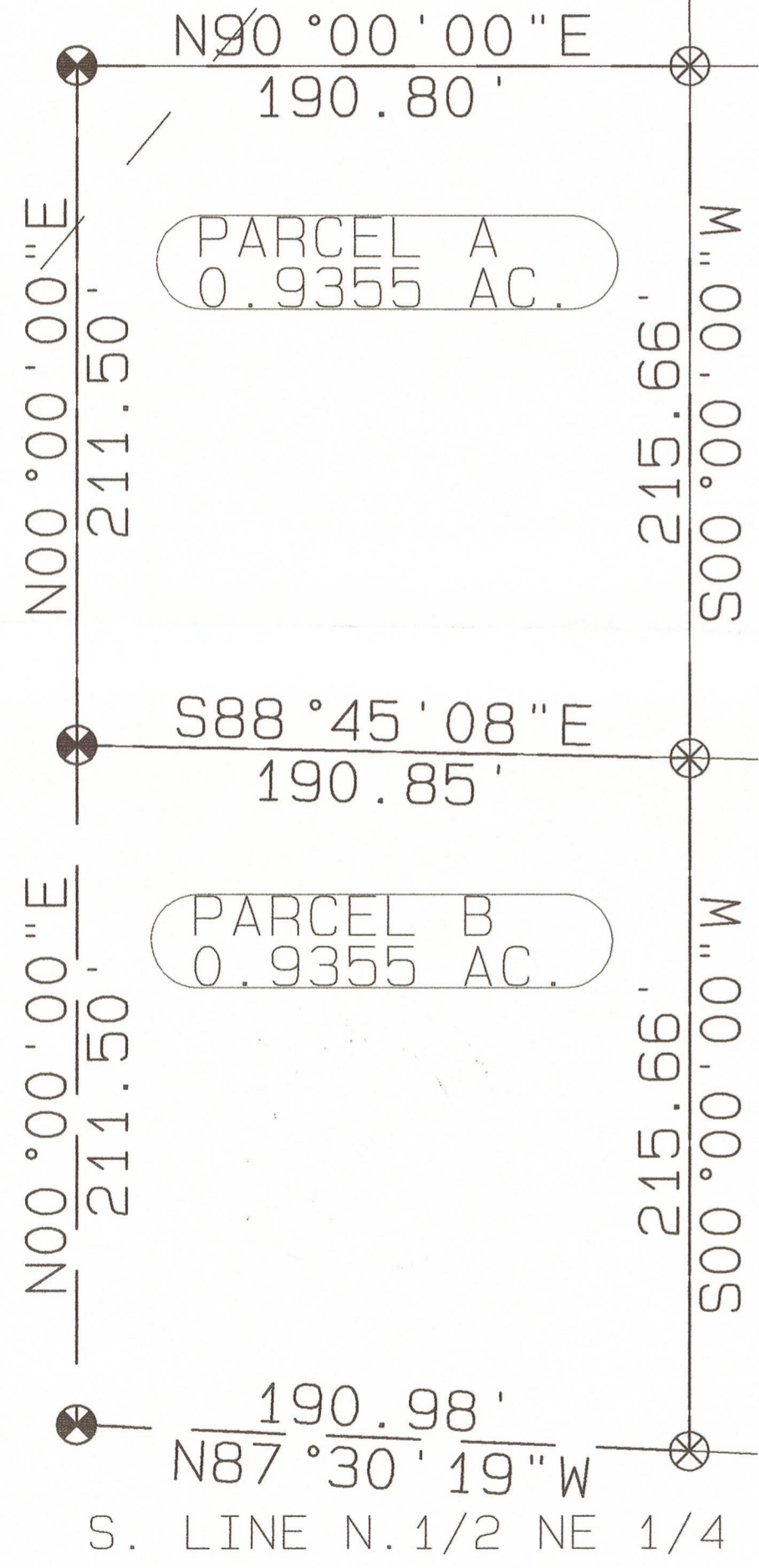
REFERENCE MATERIAL:  
ALL DEEDS SHOWN  
PRIOR SURVEY  
#6121202-0502

FOR: MARK SIMMONS
A.R.N. SURVEYORS 419-474-7090
DATE: 8/30/12 SCALE:

*David Lee Hohenberger*  
DAVID HOHENBERGER P.S.  
OHIO REG. #6256

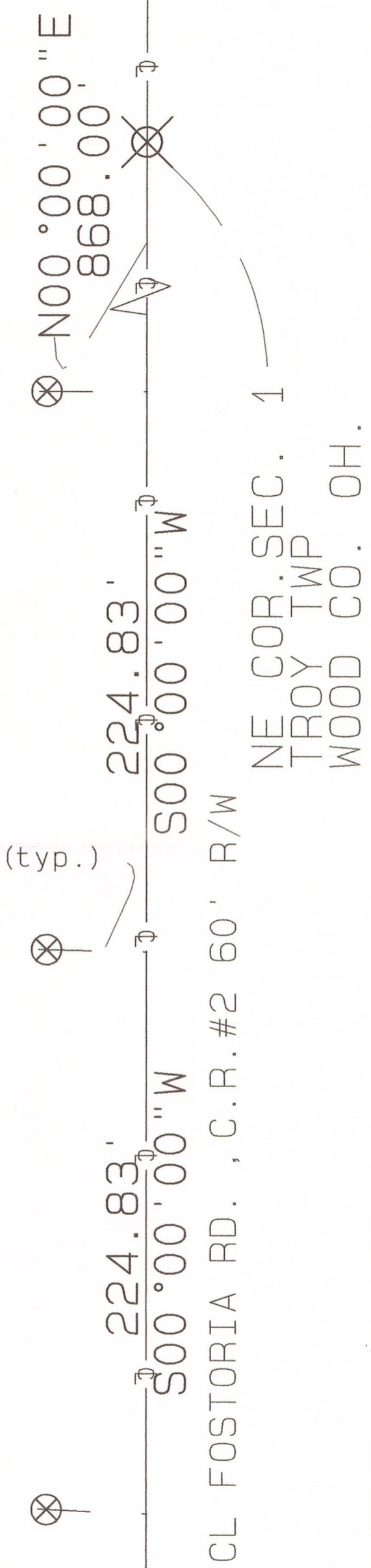
ROONEY & VICTORIA BEEKER  
U69-612-1200-00-001-000  
V. 775P. 999

150' TOLEDO EDISON  
EASEMENT V. 474 PG. 999



PARCEL A + EXIST.  
= 3.0645 AC. GROSS  
-0.155 PRO  
2.9095 NET

PARCEL B + EXIST.  
= 3.0645 AC. GROSS  
-0.155 PRO  
2.9095 NET



Troy  
A  
629