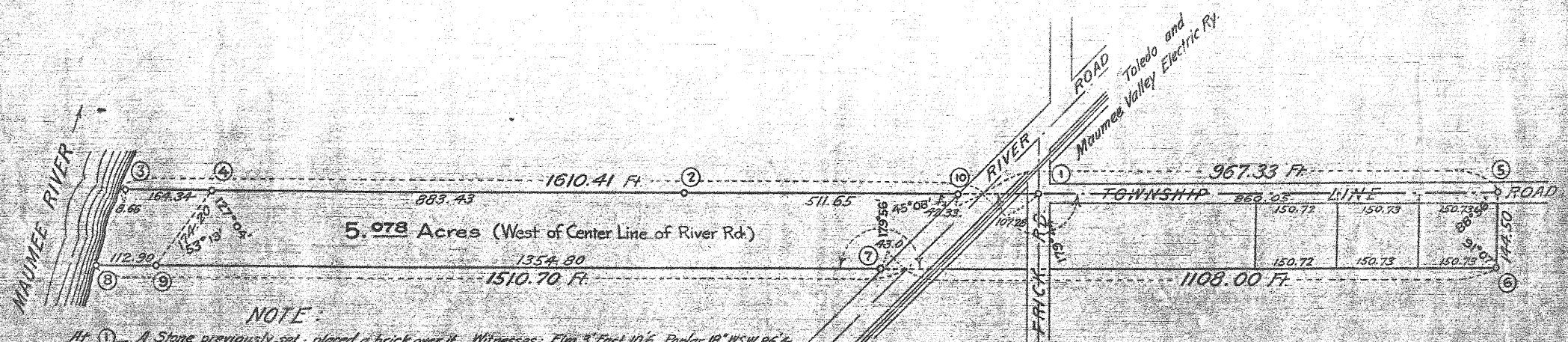


211  
Perry Tp.

#211



NOTE:

- At ① - A Stone previously set, placed a brick over it. Witnesses: Elm 3 East 10.6 Poplar 18 NSW 86.4
- ② - Witnesses: Walnut 5 SW 8.2
- ③ - Set an Iron Bolt in stones. Witnesses: Hickory 8 SE 7.6 Oak 12 NE 18.8
- ④ - Set a Limestone. No witnesses available.
- ⑤ - A Stone marked with \* previously set.
- ⑥ - Set a piece of Concrete marked with \* Witnesses: Elm 4 N N 85 Elm 5 16.3
- ⑦ - A Gas pipe previously set.
- ⑧ - Set an 1 1/2" Angle Iron 6' long at Water's edge.
- ⑨ - Replaced old Stake with a nigger-head stone marked \* Wit: Red Oak 18 N N 2.0 Red Oak 18 N 22.6
- ⑩ - Set a "nigger-head" Stone marked \* Witnesses: Elm 12 West 22.45 Tel. Pole NE 73.22

I, herewith, certify that this DIAGRAM is a correct representation of a Survey in River Tract No 77, T.3, U.S. Reserve in Perrysburg Township, Wood County, Ohio, made by me June 21-25, 1915 for Mrs. Fredericka Frobase.  
 Perrysburg, Ohio, June 1915.

*J. W. [Signature]*  
 Deputy County Surveyor

NORTH

Scale: 200 Ft. to the Inch.

#211

SURVEY #211

211  
Perry Tp.