

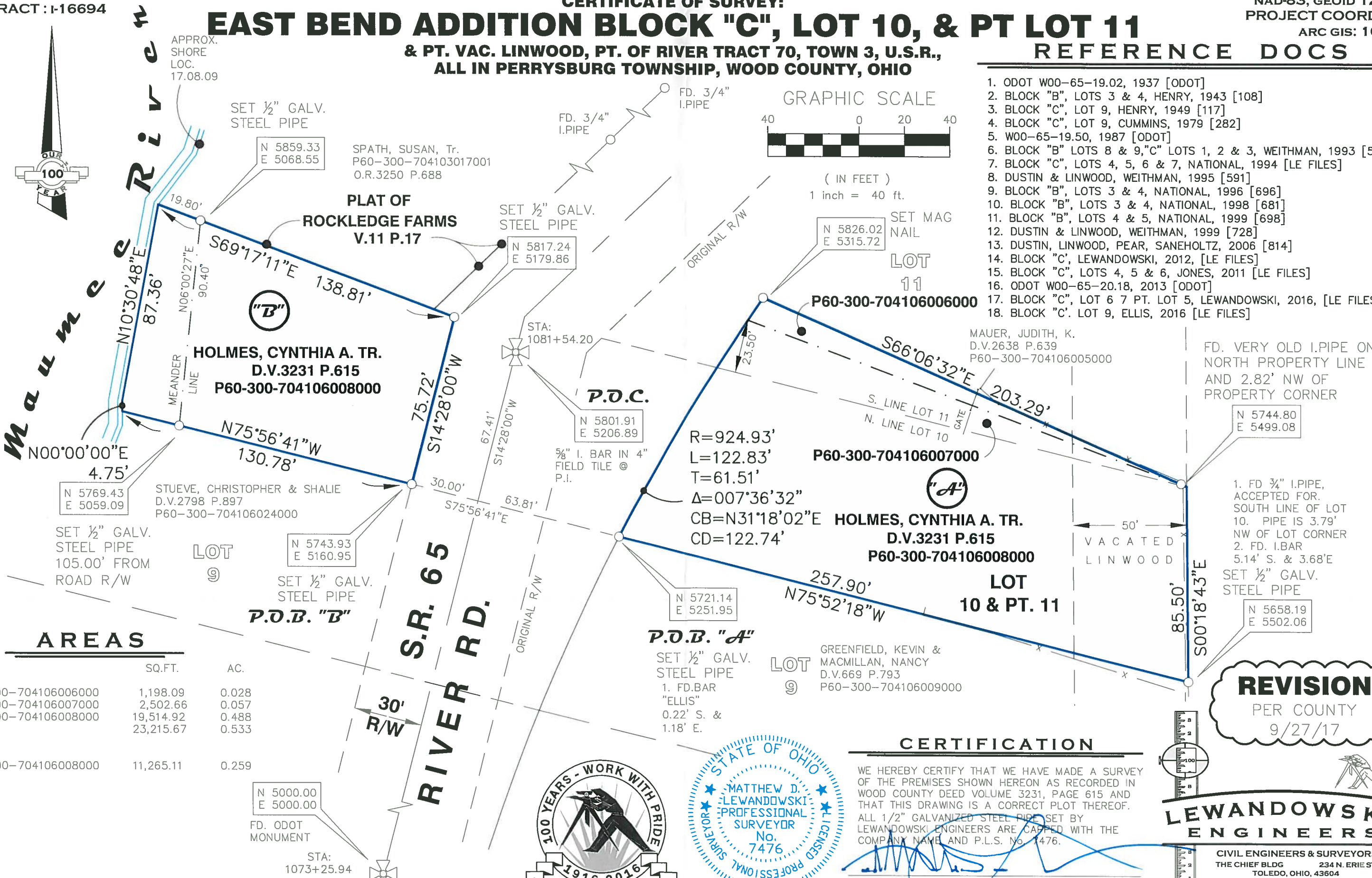
SURVEY #49545
CONTRACT : I-16694

CERTIFICATE OF SURVEY: EAST BEND ADDITION BLOCK "C", LOT 10, & PT LOT 11 & PT. VAC. LINWOOD, PT. OF RIVER TRACT 70, TOWN 3, U.S.R., ALL IN PERRYSBURG TOWNSHIP, WOOD COUNTY, OHIO

NAD-83, GEOID 12A
PROJECT COORDS.
ARC GIS: 10.3

REFERENCE DOCS

1. ODOT W00-65-19.02, 1937 [ODOT]
2. BLOCK "B", LOTS 3 & 4, HENRY, 1943 [108]
3. BLOCK "C", LOT 9, HENRY, 1949 [117]
4. BLOCK "C", LOT 9, CUMMINS, 1979 [282]
5. W00-65-19.50, 1987 [ODOT]
6. BLOCK "B" LOTS 8 & 9,"C" LOTS 1, 2 & 3, WEITHMAN, 1993 [544]
7. BLOCK "C", LOTS 4, 5, 6 & 7, NATIONAL, 1994 [LE FILES]
8. DUSTIN & LINWOOD, WEITHMAN, 1995 [591]
9. BLOCK "B", LOTS 3 & 4, NATIONAL, 1996 [696]
10. BLOCK "B", LOTS 3 & 4, NATIONAL, 1998 [681]
11. BLOCK "B", LOTS 4 & 5, NATIONAL, 1999 [698]
12. DUSTIN & LINWOOD, WEITHMAN, 1999 [728]
13. DUSTIN, LINWOOD, PEAR, SANEHOLTZ, 2006 [814]
14. BLOCK "C", LEWANDOWSKI, 2012, [LE FILES]
15. BLOCK "C", LOTS 4, 5 & 6, JONES, 2011 [LE FILES]
16. ODOT W00-65-20.18, 2013 [ODOT]
17. BLOCK "C", LOT 6 7 PT. LOT 5, LEWANDOWSKI, 2016, [LE FILES]
18. BLOCK "C". LOT 9, ELLIS, 2016 [LE FILES]



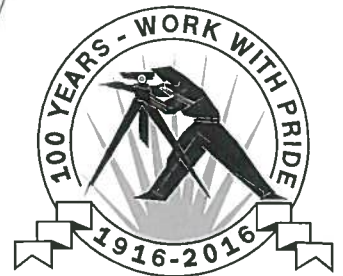
AREAS

PARCEL	SQ.FT.	AC.
A		
P60-300-704106006000	1,198.09	0.028
P60-300-704106007000	2,502.66	0.057
P60-300-704106008000	19,514.92	0.488
GROSS	23,215.67	0.533
B		
P60-300-704106008000	11,265.11	0.259

REVISION
PER COUNTY
9/27/17

CERTIFICATION

WE HEREBY CERTIFY THAT WE HAVE MADE A SURVEY OF THE PREMISES SHOWN HEREON AS RECORDED IN WOOD COUNTY DEED VOLUME 3231, PAGE 615 AND THAT THIS DRAWING IS A CORRECT PLOT THEREOF. ALL 1/2" GALVANIZED STEEL PIPE SET BY LEWANDOWSKI ENGINEERS ARE CAPPED WITH THE COMPANY NAME AND P.L.S. No. 1476.



LEWANDOWSKI ENGINEERS

CIVIL ENGINEERS & SURVEYORS
THE CHIEF BLDG 234 N. ERIE ST.
TOLEDO, OHIO, 43604
LEWANDOWSKIENG.COM
OFFICE: 419.255.4111

REGISTERED SURVEYOR, STATE OF OHIO #7476

5911
11/28/17

P-3074
11/65