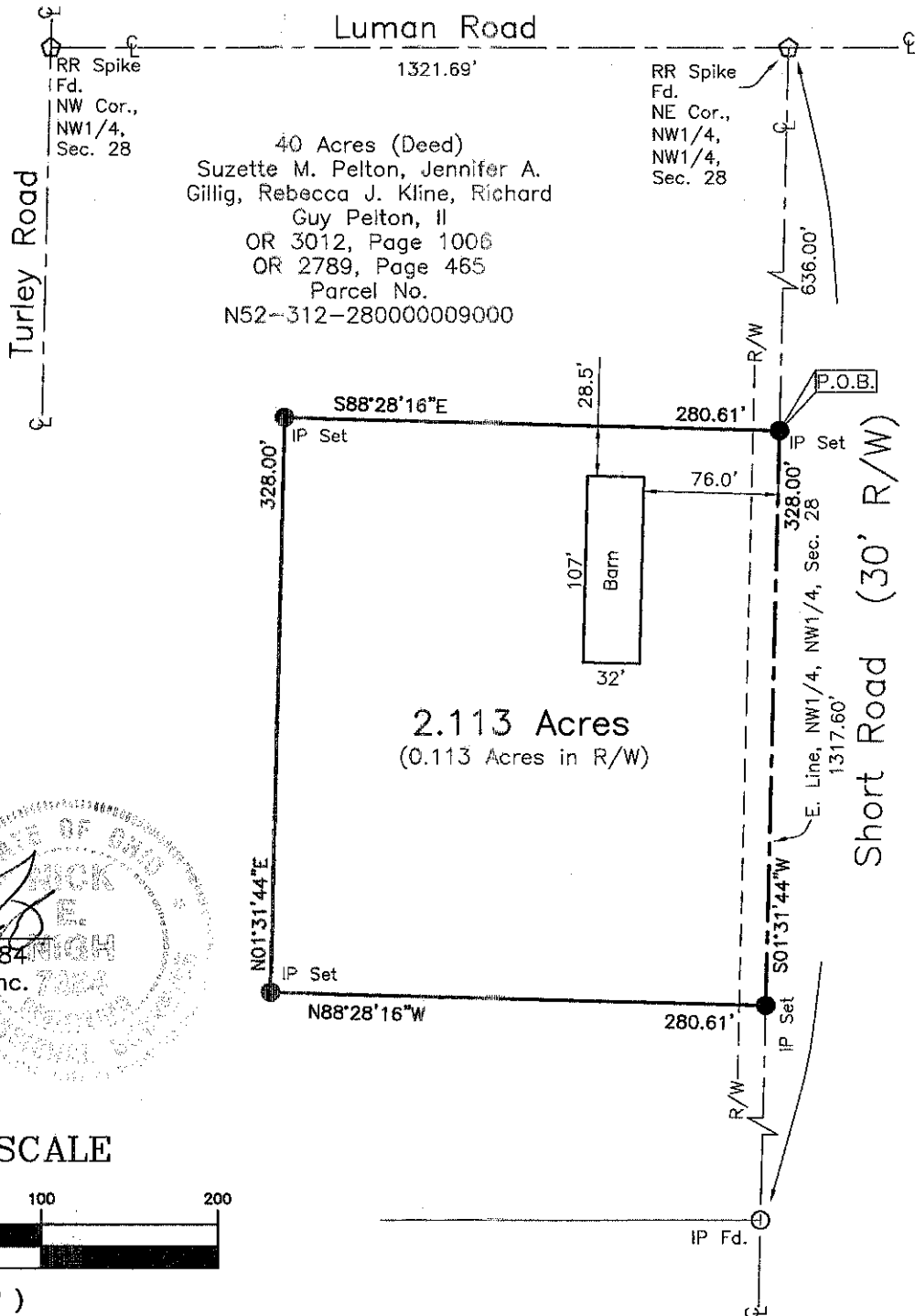


Survey For Kevin Krais

PAI Job #10-0702
Dwg. RTB

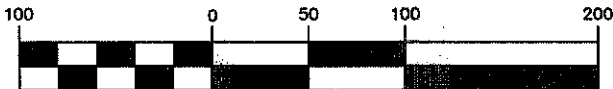
Being part of the NW1/4 of the NW1/4 of Section 28,
T3N, R12E, Perry Township, Wood County, Ohio



Rev. 12-6-2010
Date: 12-01-2010

Nick E. Nigh
Nick E. Nigh, P.S. #7384
Peterman Associates, Inc.
3480 N. Main Street
Findlay, Ohio 45840

GRAPHIC SCALE



(IN FEET)
1 inch = 100 ft.

Wood County Official Records: OR 3012, Page 1006
OR 2789, Page 465

Note: The bearings on this plat are based upon an assumed meridian and are used only for the purpose of describing angular measurements.

5/8"x30" rebar with Peterman Associates Cap.

PETERMAN
ASSOCIATES, INC.

- ARCHITECTS - ENGINEERS - SURVEYORS -
Corporate Office
3480 N. Main Street
Findlay, Ohio 45840
Office (419)422-8872
Fax (419)422-9466



Perry
B
338

Perry
B
338