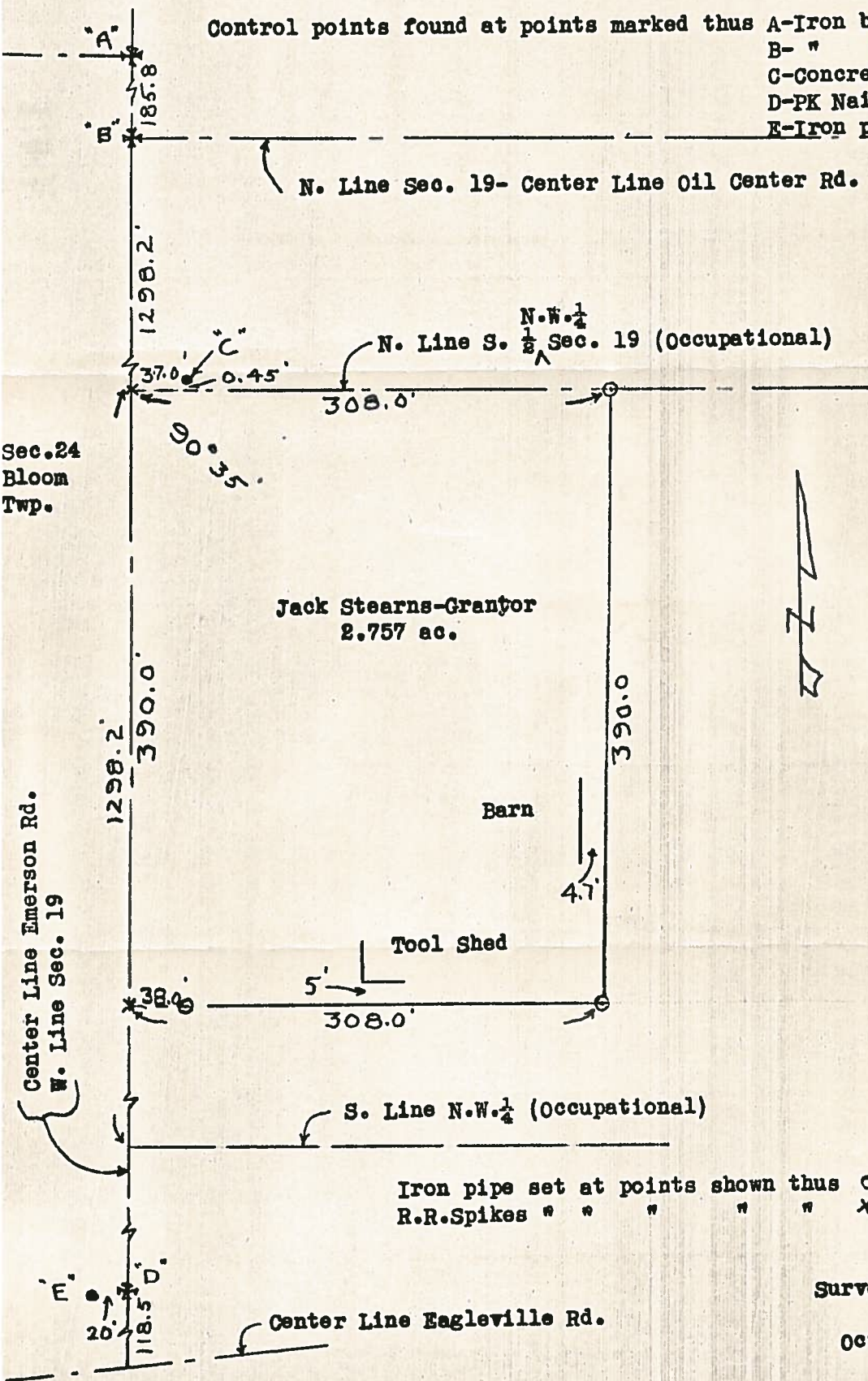


390
PERRY

SURVEY
in
N.W. 1/4, Sec. 19, Perry Twp.
Wood Co., O.

Control points found at points marked thus A-Iron bar, N.E. Cor. Sec. 24, Bloom Twp.
B- " " N.W. " " 19, Perry "
C-Concrete post
D-PK Nail set by Glen Peterman.
E-Iron pipe " " " " " } 1962



Jack Stearns-Grantor
2.757 ac.

Barn

Tool Shed

S. Line N.W. 1/4 (Occupational)

Iron pipe set at points shown thus O
R.R. Spikes " " " " " X



Surveyed by H. Morgan
Oct. 1963 Reg. Sur. 890

390
PERRY