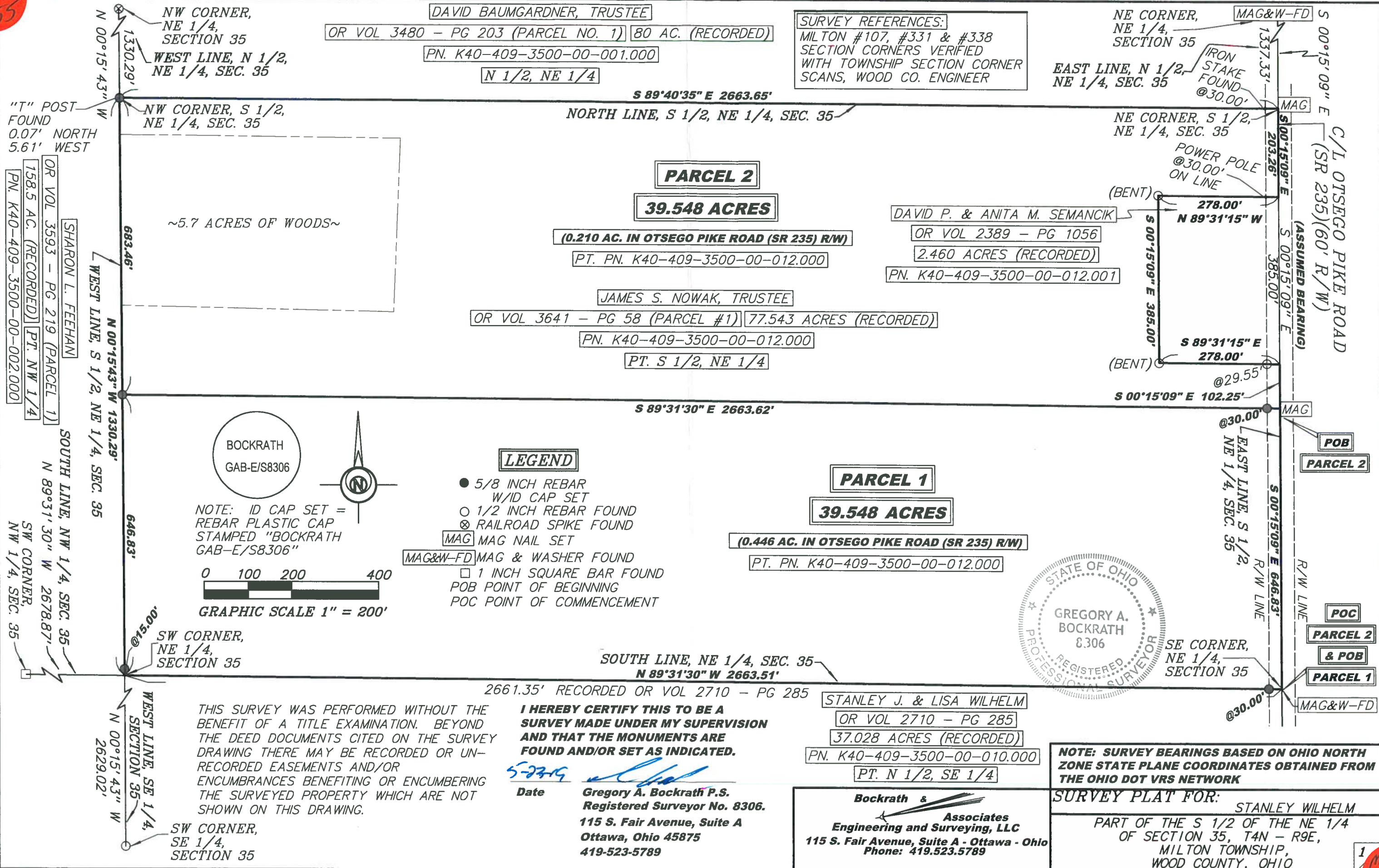


Milton A 355



DAVID BAUMGARDNER, TRUSTEE  
OR VOL 3480 - PG 203 (PARCEL NO. 1) 80 AC. (RECORDED)  
PN. K40-409-3500-00-001.000  
N 1/2, NE 1/4

SURVEY REFERENCES:  
MILTON #107, #331 & #338  
SECTION CORNERS VERIFIED  
WITH TOWNSHIP SECTION CORNER  
SCANS, WOOD CO. ENGINEER

NE CORNER, NE 1/4, SECTION 35  
EAST LINE, N 1/2, NE 1/4, SEC. 35  
MAG&W-FD  
IRON STAKE FOUND @30.00'

S 89°40'35" E 2663.65'

NORTH LINE, S 1/2, NE 1/4, SEC. 35

PARCEL 2  
39.548 ACRES

(0.210 AC. IN OTSEGO PIKE ROAD (SR 235) R/W)  
PT. PN. K40-409-3500-00-012.000

DAVID P. & ANITA M. SEMANCIK  
OR VOL 2389 - PG 1056  
2.460 ACRES (RECORDED)  
PN. K40-409-3500-00-012.001

JAMES S. NOWAK, TRUSTEE  
OR VOL 3641 - PG 58 (PARCEL #1) 77.543 ACRES (RECORDED)  
PN. K40-409-3500-00-012.000  
PT. S 1/2, NE 1/4

S 89°31'30" E 2663.62'

PARCEL 1  
39.548 ACRES

(0.446 AC. IN OTSEGO PIKE ROAD (SR 235) R/W)  
PT. PN. K40-409-3500-00-012.000

C/L OTSEGO PIKE ROAD (SR 235) (60' R/W)  
(ASSUMED BEARING)  
MAG  
POWER POLE @30.00' ON LINE  
S 00°15'09" E 102.25'  
EAST LINE, S 1/2, NE 1/4, SEC. 35  
MAG  
R/W LINE  
R/W LINE  
MAG&W-FD

"T" POST FOUND  
0.07' NORTH  
5.61' WEST

OR VOL 3593 - PG 219 (PARCEL 1)  
158.5 AC. (RECORDED) PT. NW 1/4  
PN. K40-409-3500-00-002.000  
SHARON L. FEEHAN

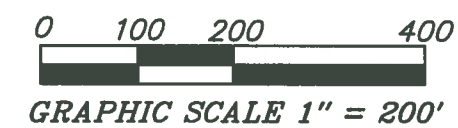
WEST LINE, S 1/2, NE 1/4, SEC. 35  
N 00°15'43" W 1330.29'  
683.46'  
WEST LINE, NW 1/4, SEC. 35  
N 00°15'43" W 1330.29'  
646.83'

WEST LINE, SE 1/4, SECTION 35  
N 00°15'43" W 2629.02'

~5.7 ACRES OF WOODS~

BOCKRATH  
GAB-E/S8306

NOTE: ID CAP SET =  
REBAR PLASTIC CAP  
STAMPED "BOCKRATH  
GAB-E/S8306"



LEGEND

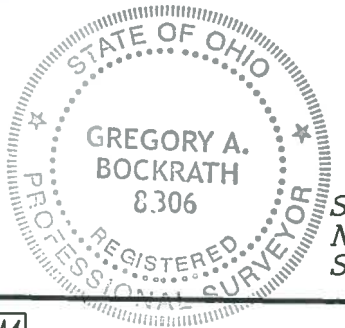
- 5/8 INCH REBAR W/ID CAP SET
- 1/2 INCH REBAR FOUND
- RAILROAD SPIKE FOUND
- MAG MAG NAIL SET
- MAG&W-FD MAG & WASHER FOUND
- 1 INCH SQUARE BAR FOUND
- POB POINT OF BEGINNING
- POC POINT OF COMMENCEMENT

SW CORNER, NE 1/4, SECTION 35

SOUTH LINE, NE 1/4, SEC. 35  
N 89°31'30" W 2663.51'

2661.35' RECORDED OR VOL 2710 - PG 285

STANLEY J. & LISA WILHELM  
OR VOL 2710 - PG 285  
37.028 ACRES (RECORDED)  
PN. K40-409-3500-00-010.000  
PT. N 1/2, SE 1/4



THIS SURVEY WAS PERFORMED WITHOUT THE BENEFIT OF A TITLE EXAMINATION. BEYOND THE DEED DOCUMENTS CITED ON THE SURVEY DRAWING THERE MAY BE RECORDED OR UNRECORDED EASEMENTS AND/OR ENCUMBRANCES BENEFITING OR ENCUMBERING THE SURVEYED PROPERTY WHICH ARE NOT SHOWN ON THIS DRAWING.

I HEREBY CERTIFY THIS TO BE A SURVEY MADE UNDER MY SUPERVISION AND THAT THE MONUMENTS ARE FOUND AND/OR SET AS INDICATED.

Date 5-23-19 Gregory A. Bockrath P.S.  
Registered Surveyor No. 8306.  
115 S. Fair Avenue, Suite A  
Ottawa, Ohio 45875  
419-523-5789

Bockrath & Associates  
Engineering and Surveying, LLC  
115 S. Fair Avenue, Suite A - Ottawa - Ohio  
Phone: 419.523.5789

NOTE: SURVEY BEARINGS BASED ON OHIO NORTH ZONE STATE PLANE COORDINATES OBTAINED FROM THE OHIO DOT VRS NETWORK

SURVEY PLAT FOR: STANLEY WILHELM  
PART OF THE S 1/2 OF THE NE 1/4 OF SECTION 35, T4N - R9E, MILTON TOWNSHIP, WOOD COUNTY, OHIO

Milton A