

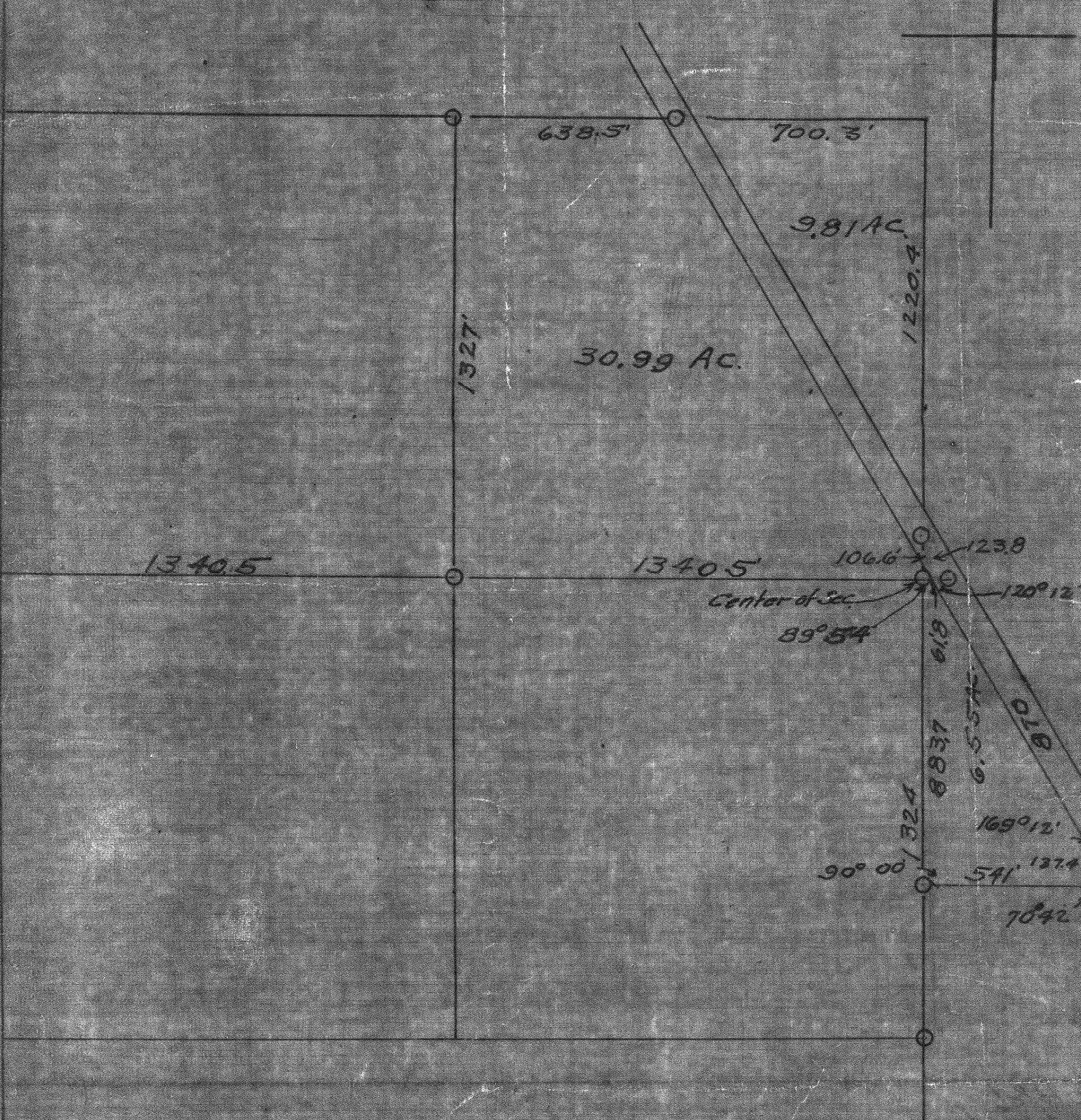
54

SURVEY OF
 SE 1/4 NW 1/4 & PART OF NW 1/4 SE 1/4 SEC, 27 T 6 N, R 10 E.
 MIDDLETON TOWNSHIP, WOOD COUNTY, OHIO.

SCALE: 1" = 100'

NOTES:

- Designate Monuments Previously Set.
- " Iron Pins Set in This Survey.



I hereby Certify The Above Plot to be a true
 Return of The Survey as made by me
 May 16, 18, 1936. Signed,

John F. Fallier
 Sur. & Engr.

5/4 Post