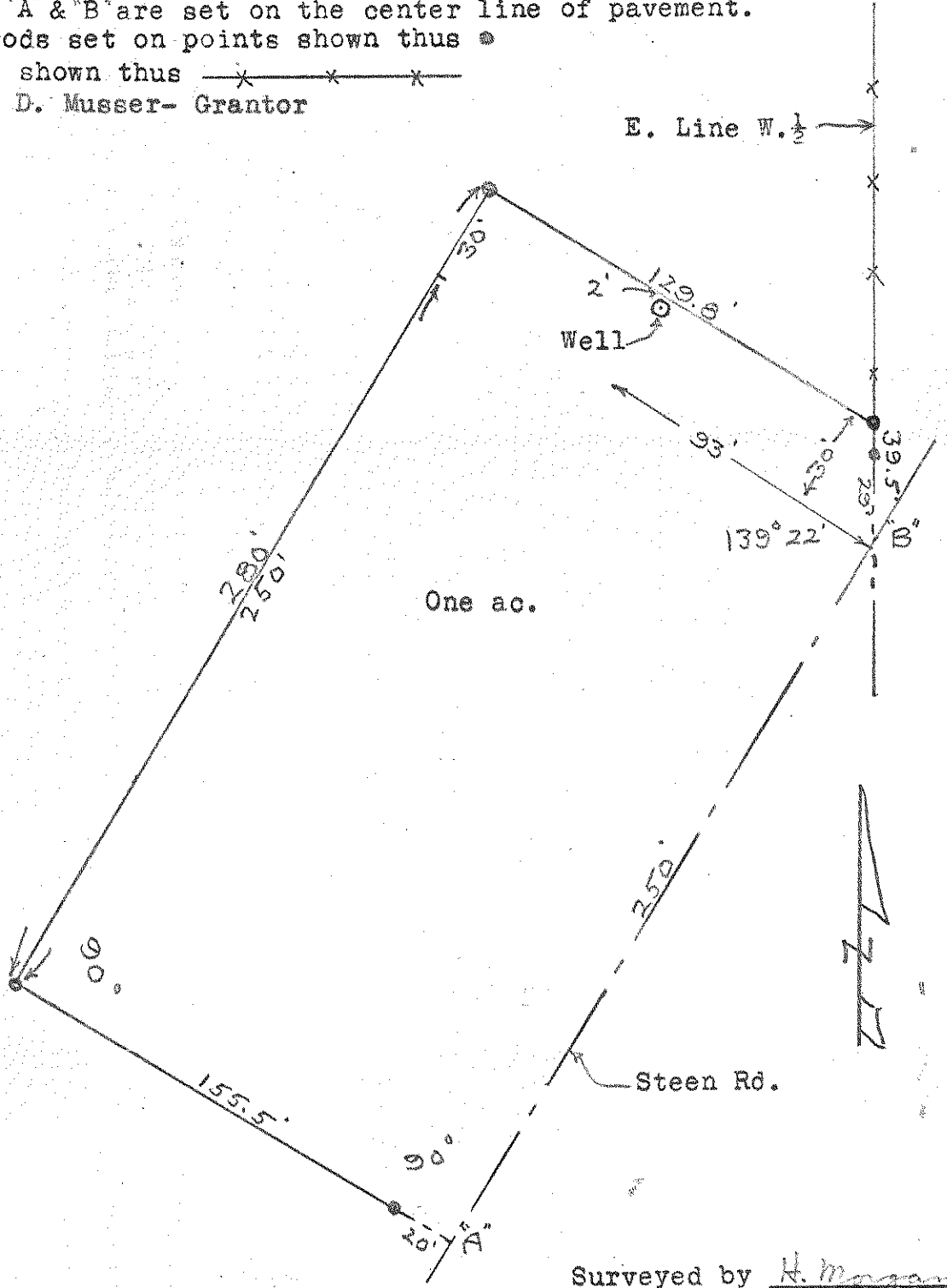


348
LIBERTY

SURVEY
in
W $\frac{1}{2}$, S.W. $\frac{1}{4}$, Sec. 10, T 4 N-R 10 E, Liberty Twp.
Wood Co. O.

Points "A" & "B" are set on the center line of pavement.
Iron rods set on points shown thus ●
Fences shown thus — x — x — x —
Brice D. Musser- Grantor



Surveyed by H. Morgan
Aug. 1970 Reg. Sur. 890

348
LIBERTY