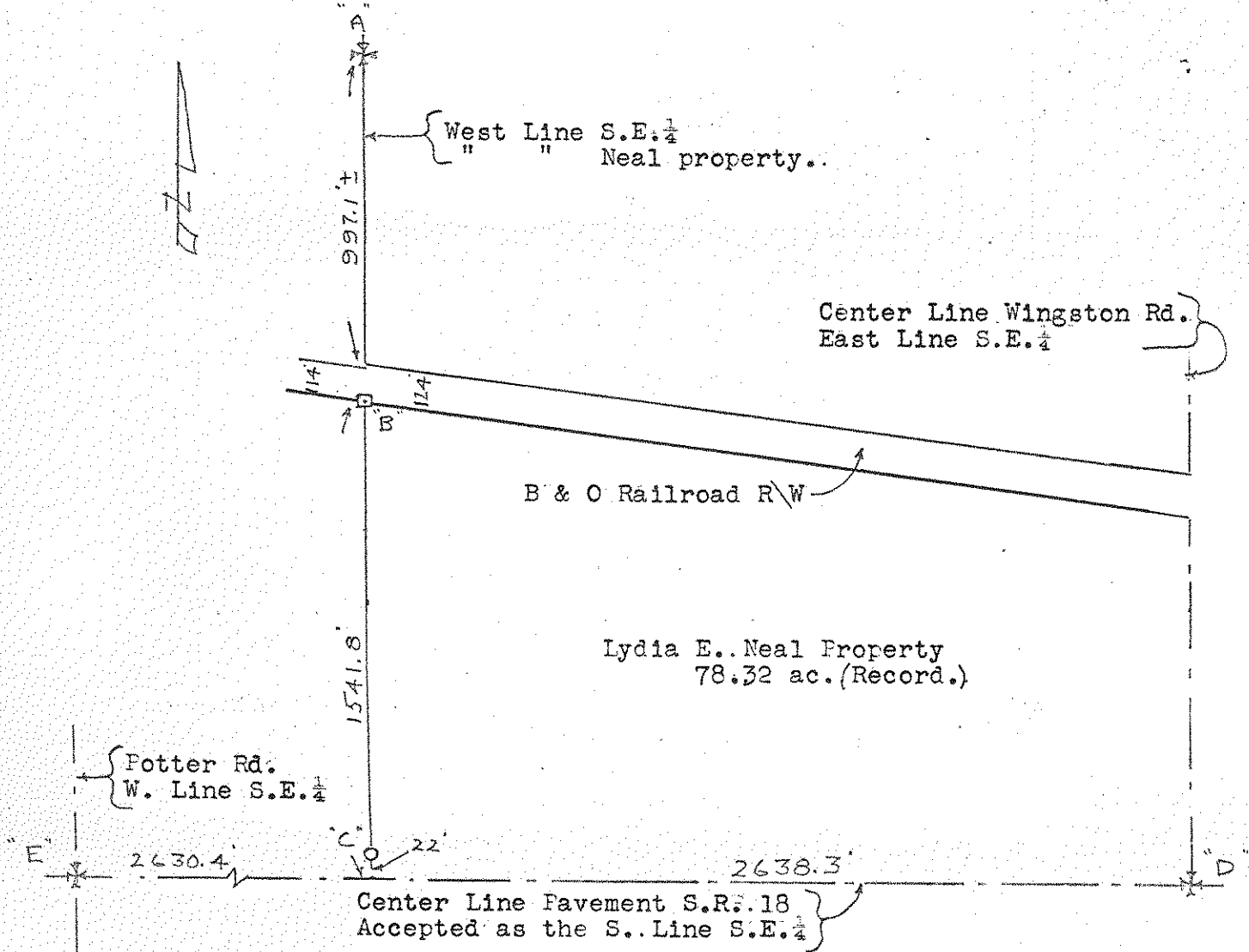


571
HENRY

SURVEY
in
S.E. 1/4, Sec. 29, T3N R10E, Henry Twp. Wo. Co. O.
For
Lydia E. Neal to establish the west line of
her property..

- At point "A" found stone at N.W. Corner of the S.E. 1/4
- " " B " Wooden Post (Checked same and accepted)
- " " C set Iron Pipe on line A-B produced.
- " " D found Iron Pin at S.E. Corner of the S.E. 1/4
- " " E could not find the Original Corner.



Surveyed by H. Morgan
Oct.. 1966 Reg.. Sur. 890

XERO COPY

XERO COPY

XERO COPY

571
HENRY