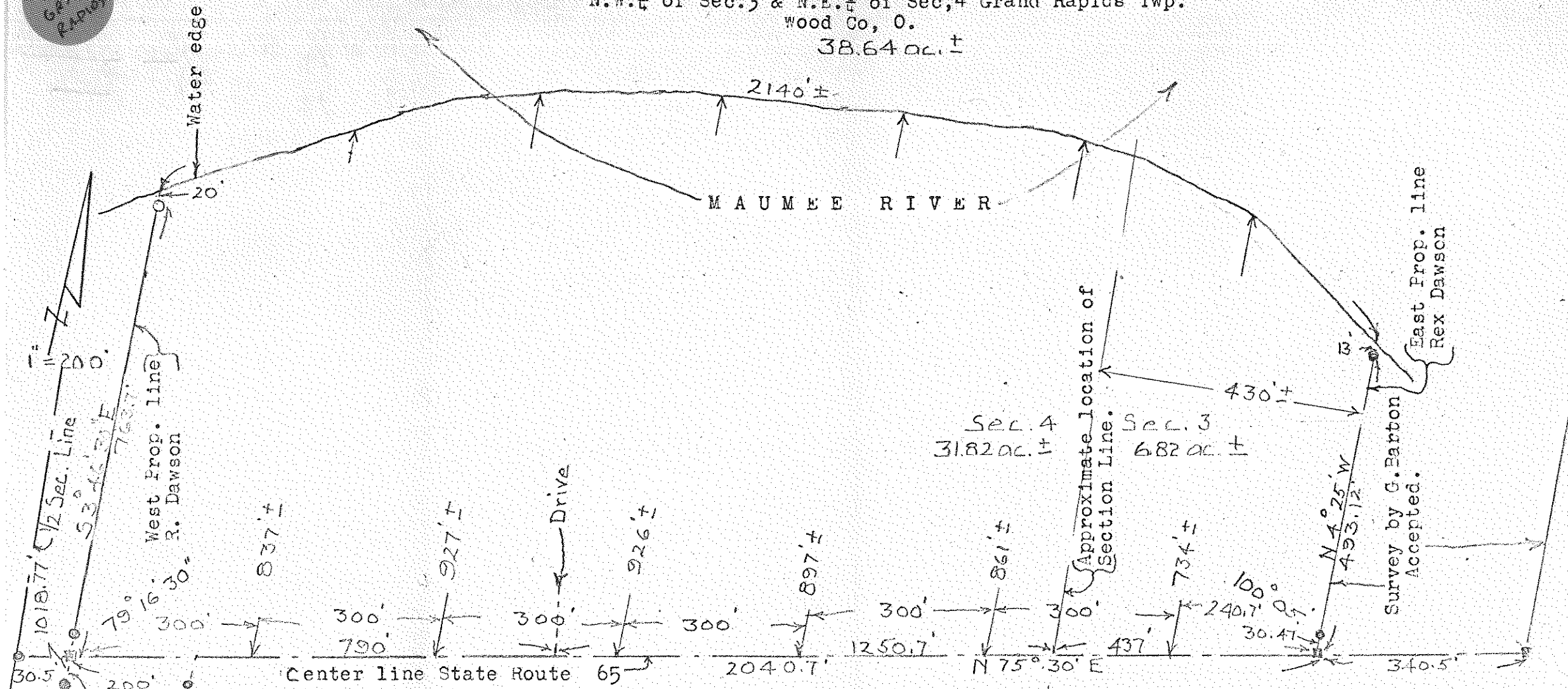


337  
GRAND  
RAPIDS

SURVEY  
in  
N.W. 1/4 of Sec. 3 & N.E. 1/4 of Sec. 4 Grand Rapids Twp.  
Wood Co., O.  
38.64 ac. ±



Iron markers found at points shown thus ■  
 Iron pipe found at points shown thus ●  
 Iron pipe set at points shown thus ○

Survey by  
Fossemeyer  
Accepted.

West Prop. line  
R. Dawson

East Prop. line  
Rex Dawson  
Survey by G. Barbon  
Accepted.

Surveyed by H. Morgan  
Dec. 1972 Reg. Sur. 890

337  
GRAND  
RAPIDS