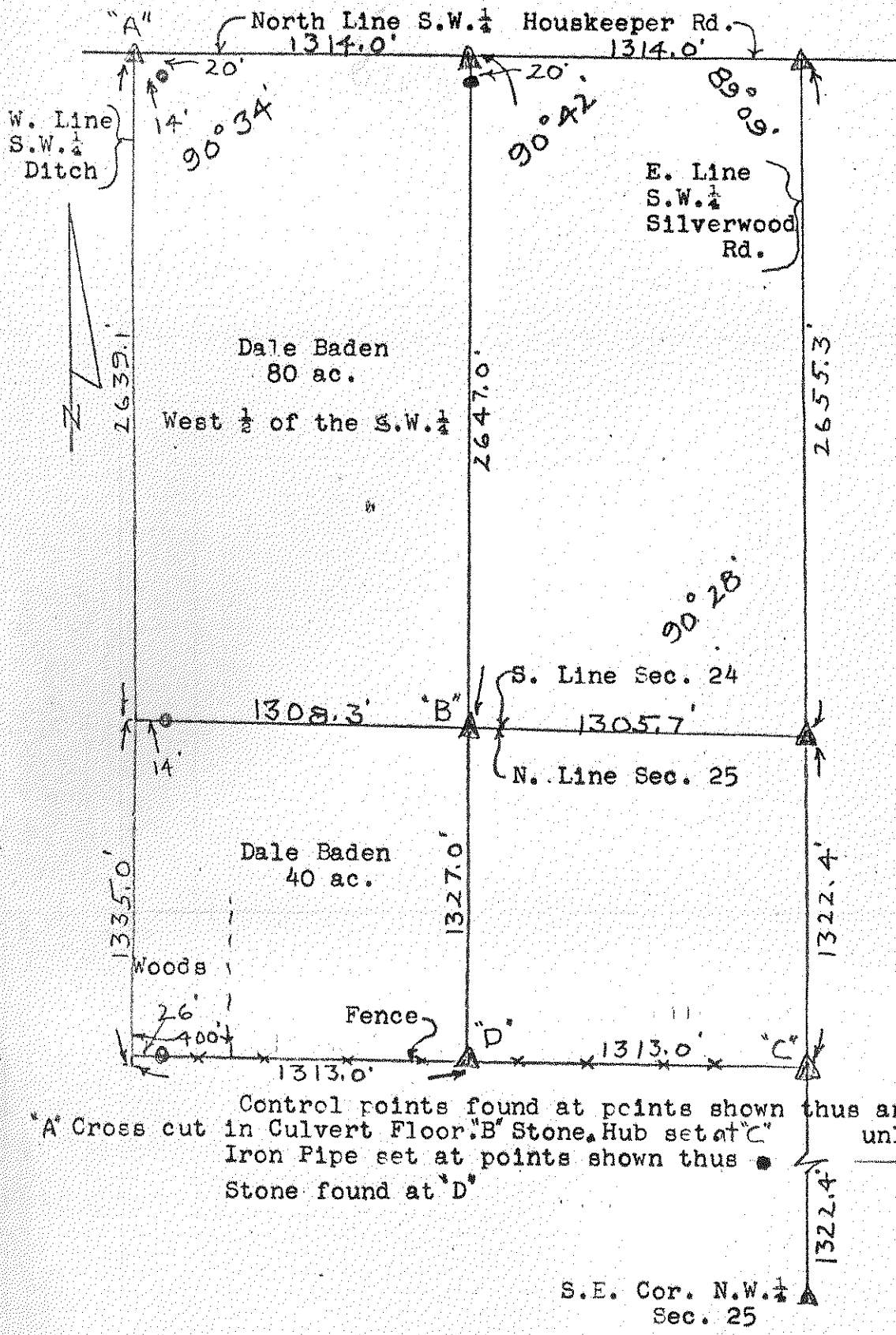


405
CENTER

SURVEY

of
W. 1/2, S.W. 1/4, Sec. 24, Center Twp.,
N.W. 1/4, N.W. 1/4, Sec. 25, " "
Wood Co. O.



Surveyed by H. Morgan
May 1975 Reg. Sur. 890

Control points found at points shown thus and are Iron Pins } \triangle
"A" Cross cut in Culvert Floor. "B" Stone Hub set at "C"
Iron Pipe set at points shown thus } unless noted
Stone found at "D" } \bullet

S.E. Cor. N.W. 1/4
Sec. 25

405
CENTER