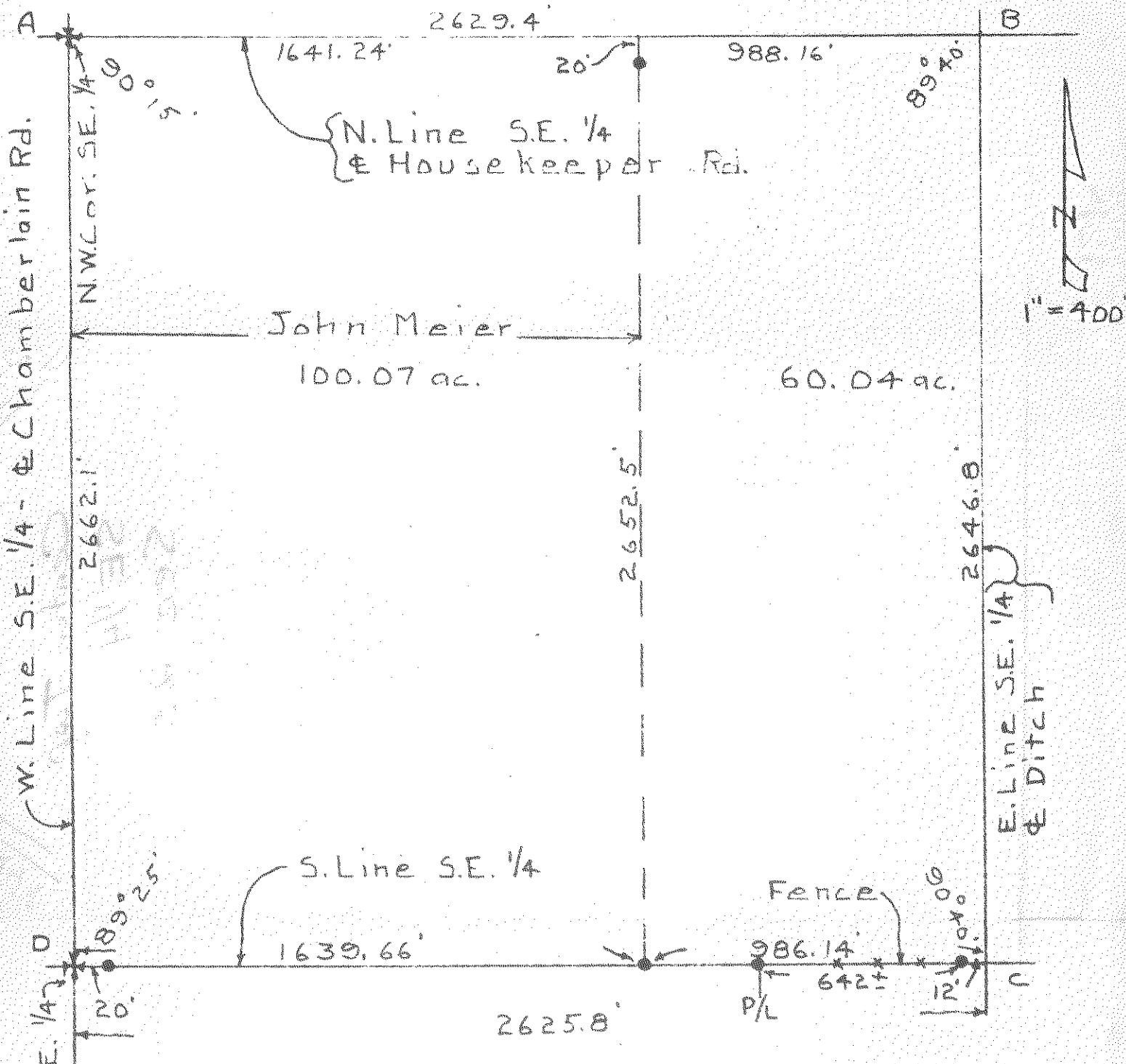


466
CENTER

SURVEY

S. E. $\frac{1}{4}$, Sec. 23, Center Twp.

Wood County, Ohio



At points A and D found stones.

At point B established by centering concrete culvert.

Point C came in bottom of ditch and iron pipe was set 12 foot west.

Iron pipe set at points shown thus ●

Surplus prorated.

Surveyed by H. Morgan

Aug. 1961

Reg. Sur. 890

466
CENTER