

B.G.
102P
1150

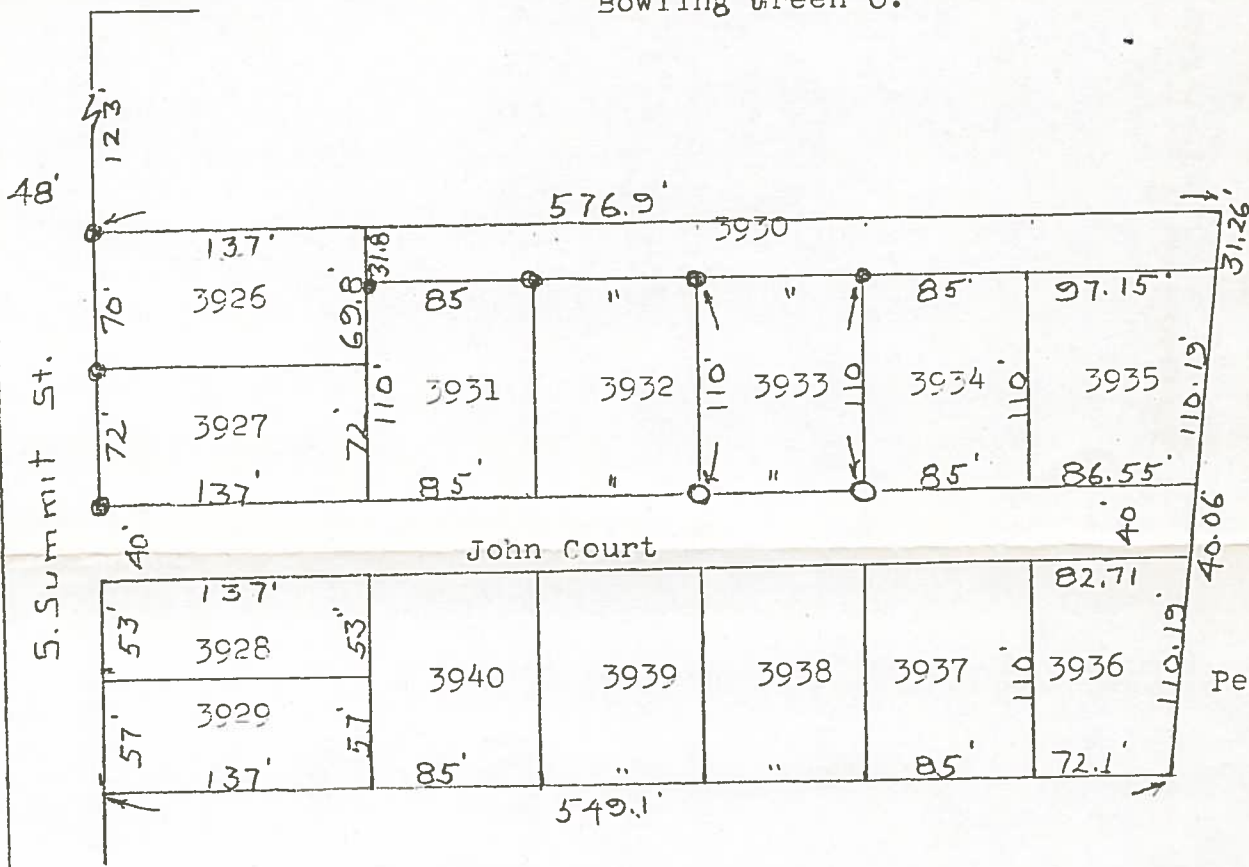
SURVEY

of
Lot 3933

in

Subdivision of O.L. 115
Bowling Green O.

Derby St.



1" = 100'

Iron pipe found at points shown thus ●

Iron pipe set at points shown thus ○

Surveyed by H. Morgan

May 1976 Reg. Sur. 890

B.G.
102P
1150