

B.G.  
CORP  
1122

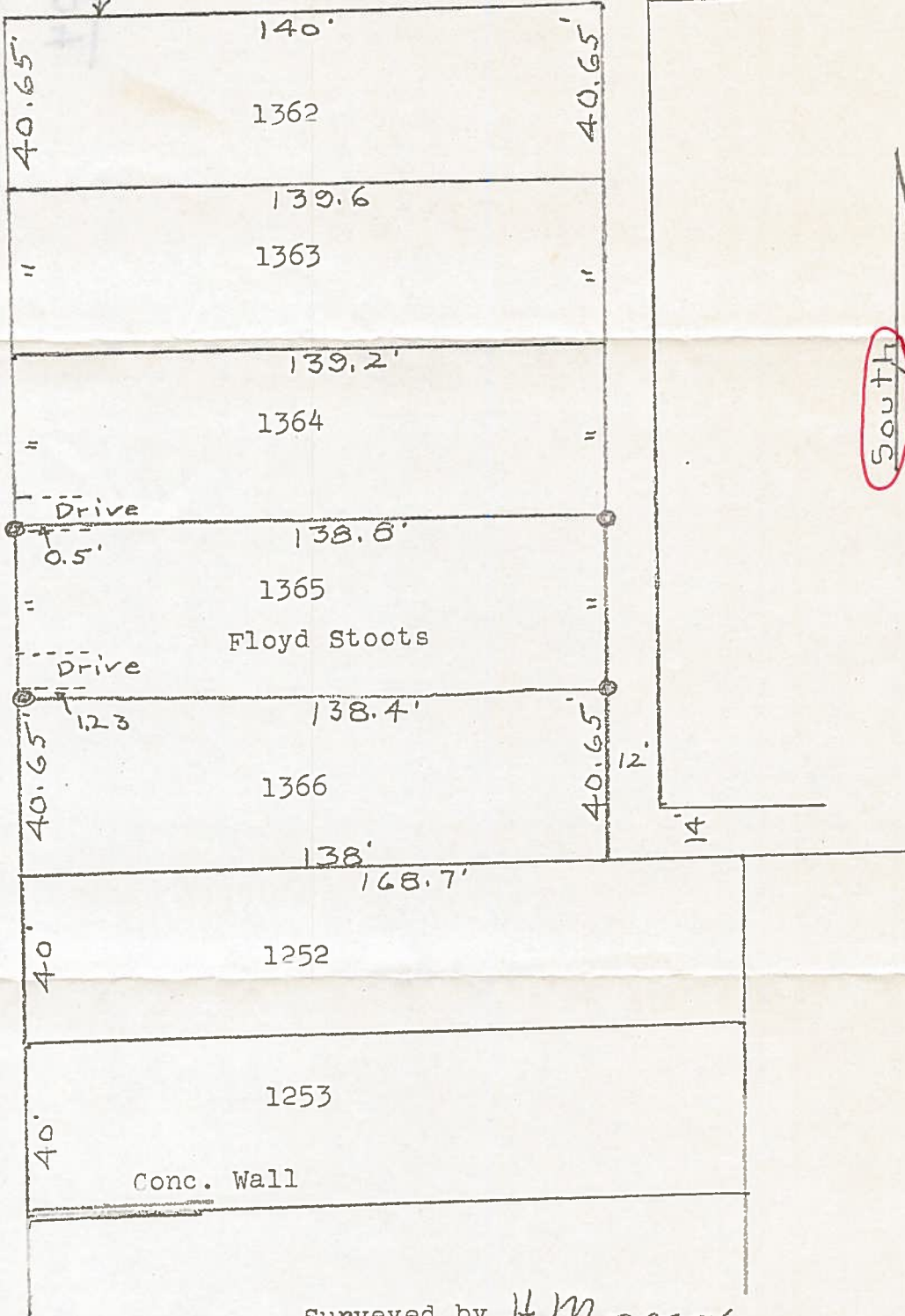
SURVEY  
of  
Lot 1365  
Bowling Green O.

Iron pipe set at points shown thus ⊙

N. property line Palmer Ave. 50' R/W

48'

Summit St.



Surveyed by H. Morgan

June 1975 Reg. Sur. 890

B.G.  
CORP  
1122