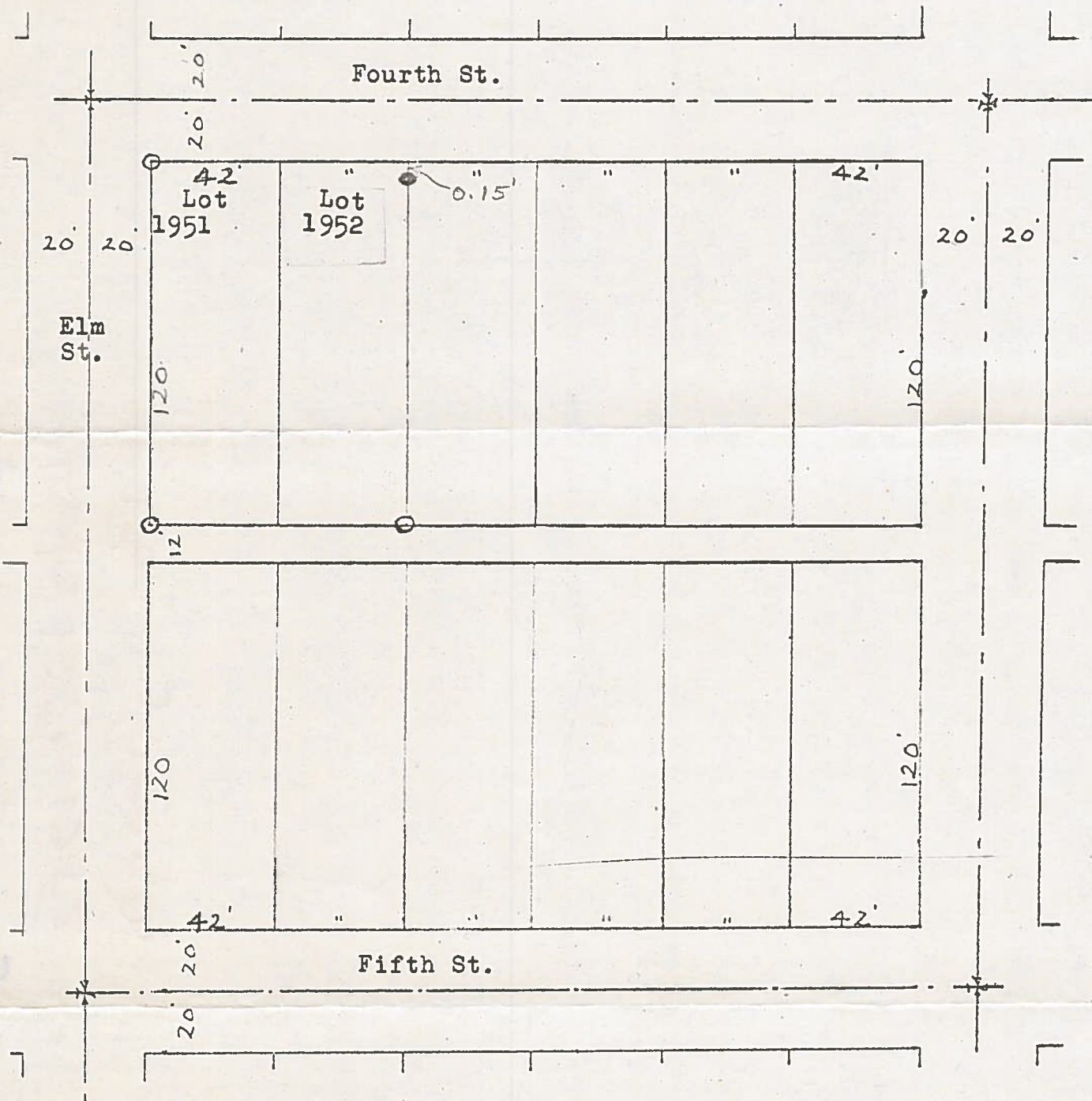


B.G.  
CORP  
1004

SURVEY  
of  
Lots 1951- 1952  
Bowling Green, O.



Control points shown thus  $\nabla$   
 Iron pipe found at point shown thus  $\odot$   
 Iron pipe set at points shown thus  $\circ$

Surveyed by H. Morgan  
 Aug. 1969 Reg. Sur. 890

B.G.  
CORP  
1004