

B.G.  
CORP  
950

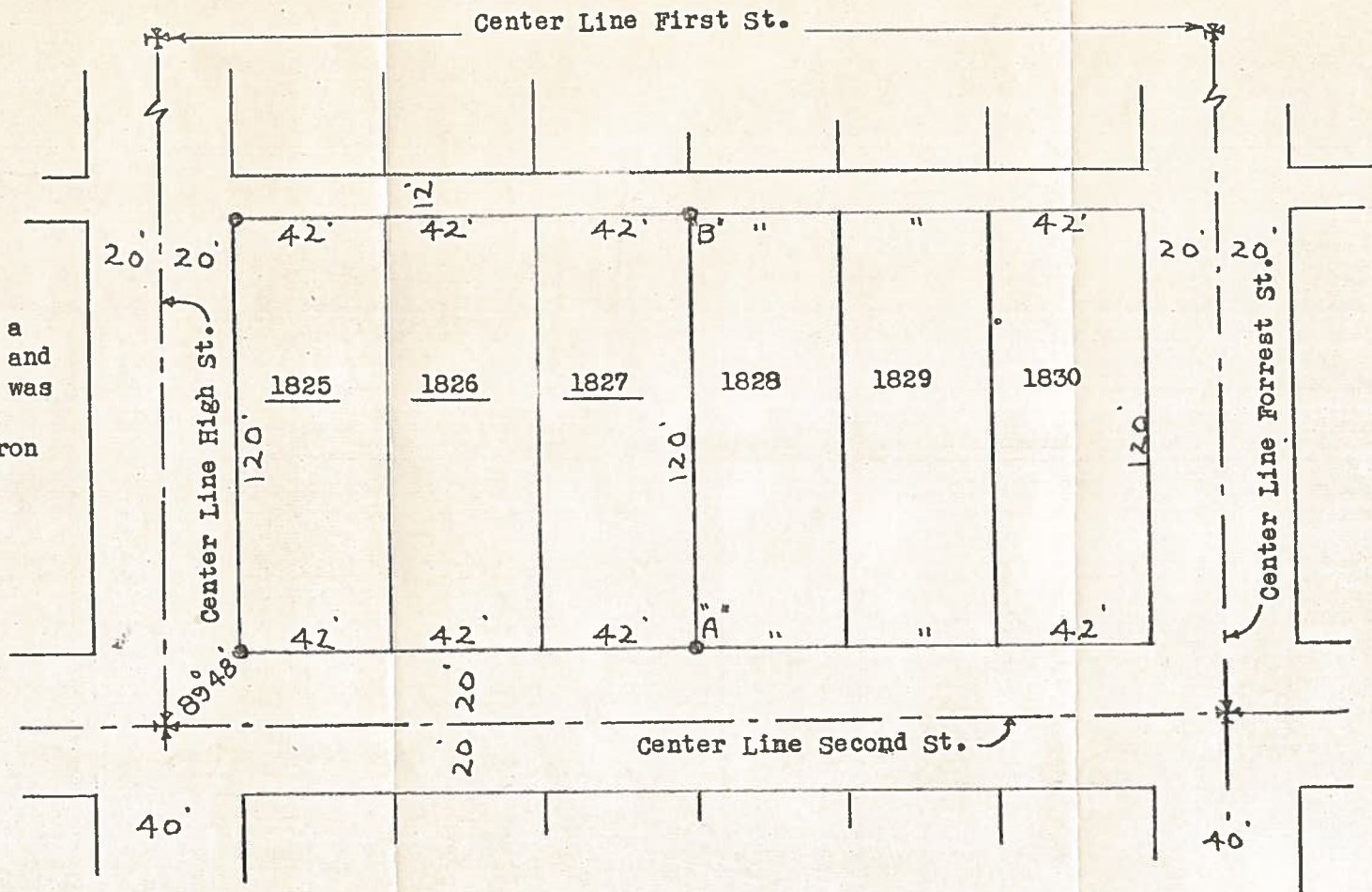
B.G.  
CORP  
950

# SURVEY

Lots 1825, 1826, 1827  
Bowling Green, O.

Control points found at points shown thus \*  
Iron pipe set at points shown thus ●

Note  
Point "A" came in a  
Black Top drive and  
a Railroad Spk. was  
set,  
At Point "B" an Iron  
Pipe was found.



Surveyed by H. Morgan

June 1964 Reg. Sur. 890