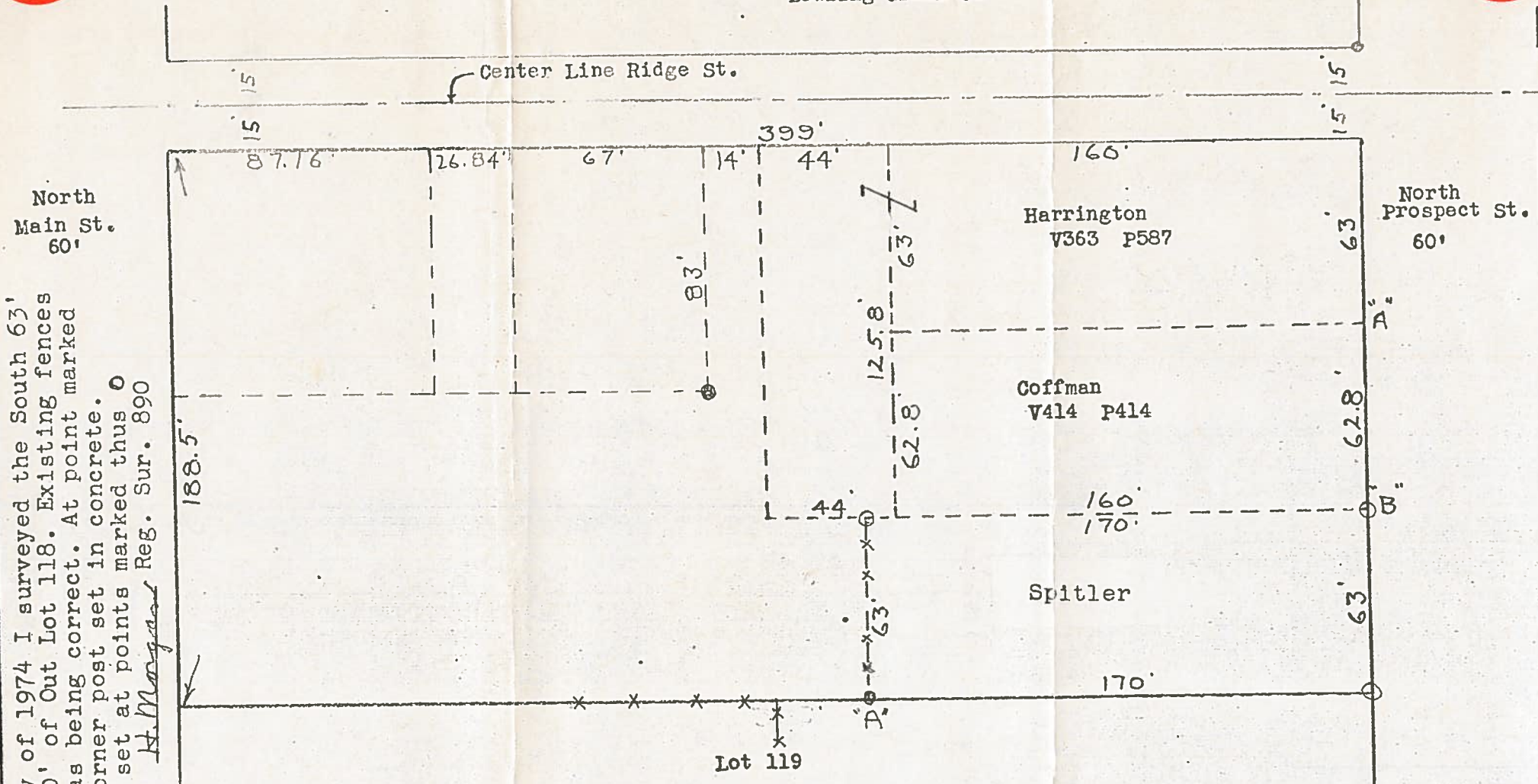


B.G.
CORP
1143

B.G.
CORP
1143

SURVEY
in
Lot 118
Bowling Green O.



Note: In May of 1974 I surveyed the South 63' of the East 170' of Out Lot 118. Existing fences were accepted as being correct. At point marked "A" we found a corner post set in concrete. Iron pipe were set at points marked thus \odot
H. Morgan Reg. Sur. 890

Iron pipe found at point shown thus \odot
Point "A" comes at north edge of north curb of driveway.
Point "B" comes at jog in walk.

Checked by *H. Morgan*

Sept. 1964 Reg. Sur. 890