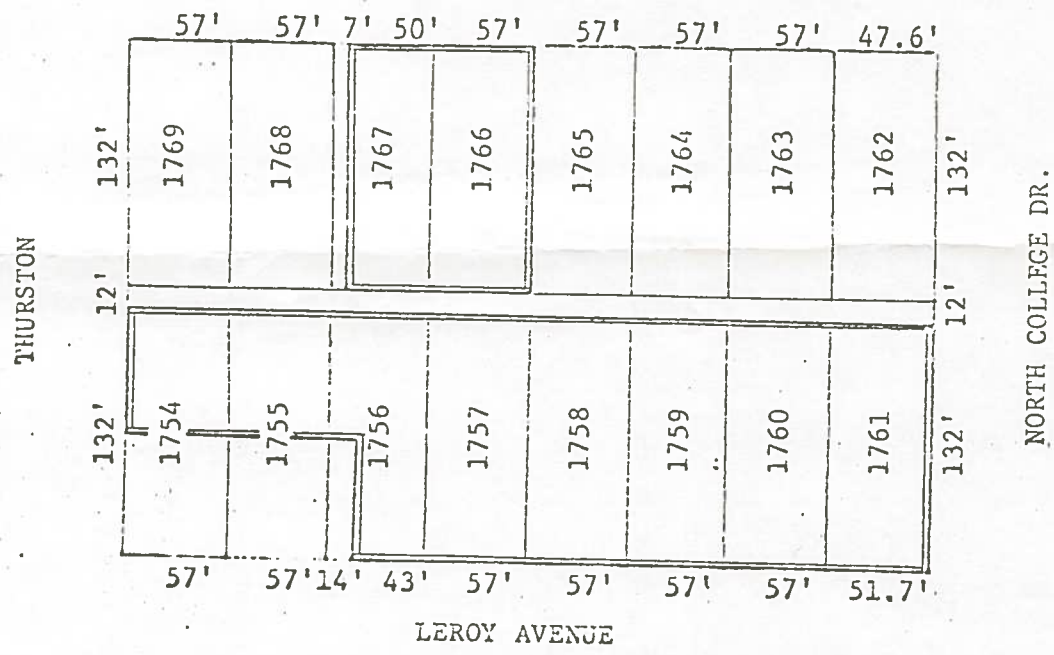


B.G. Corp 11/64

Bowling Green City East  
 Lots 1754-1767



FRAZEE AVENUE



Proposed  
 WOOD COUNTY MENTAL HEALTH CLINIC  
 TRANSITIONAL FACILITY SITE  
 (Bordered by Double Lines)

B.G. Corp 11/64  
 must provide  
 1st 1st 1st 1st

B.G. Corp 11/64

Lot No.	Size	Square Feet	Note
1754 ✓	57 x 66	3,762.0	North 1/2
1755 ✓	57 x 66	3,762.0	North 1/2
1756 ✓	57 x 66	3,762.0	North 1/2
1756 ✓	43 x 66	2,838.0	South 1/2
1757 ✓	57 x 132	7,524.0	
1758 ✓	57 x 132	7,524.0	
1759 ✓	57 x 132	7,524.0	
1760 ✓	57 x 132	7,524.0	
1761 ✓	51.7 x 132	6,824.4	
1766 ✓	57 x 132	7,524.0	
1767 ✓	50 x 132	6,600.0	
		<u>65,168.4</u>	