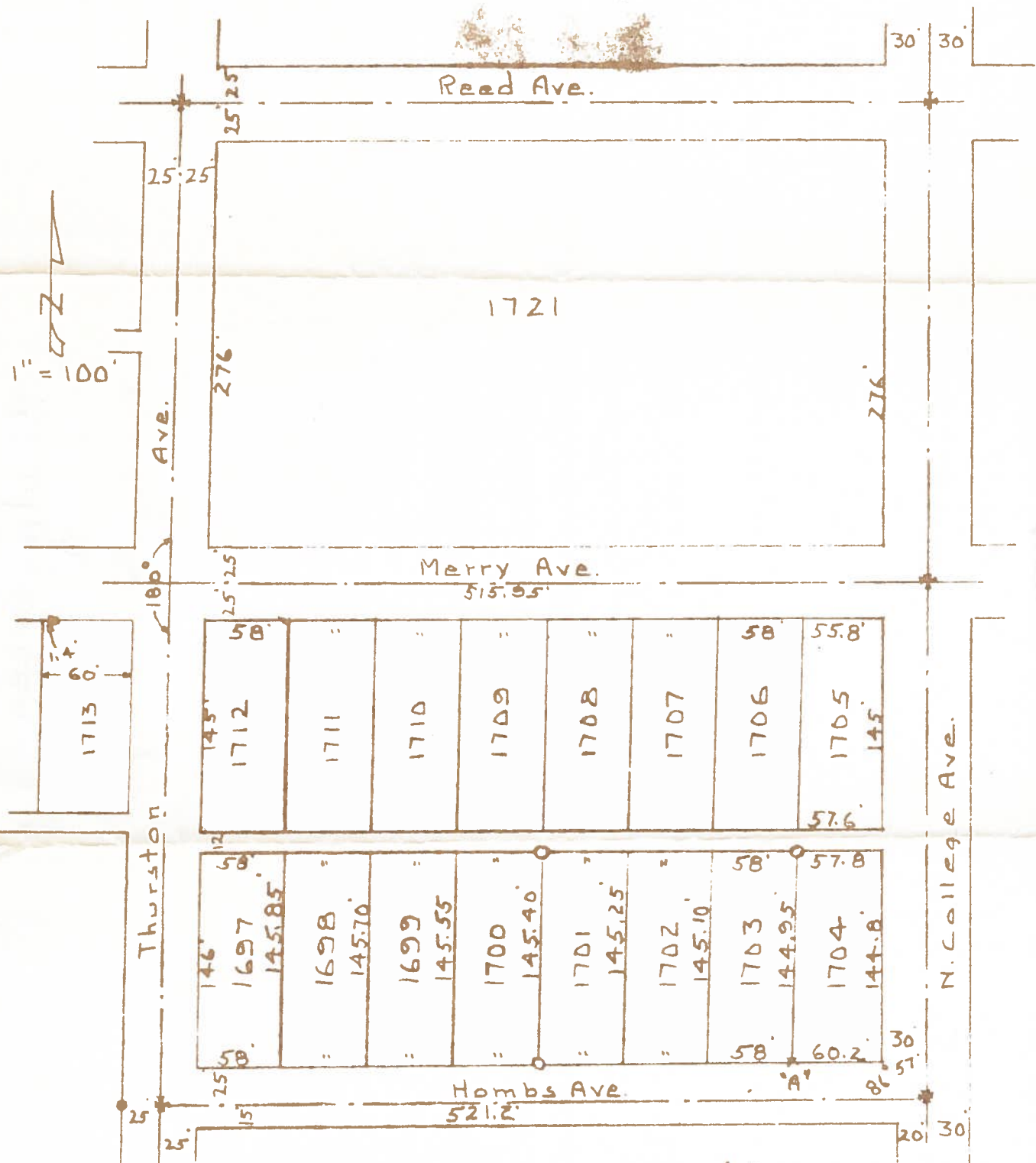


B.G.
CORP
922

Lots 1701, 1702 and 1703
Bowling Green, Ohio

Iron pipe set at points shown thus o
 " " found " " ●
 Control points " " *
 Cut cross in conc. drive at point A " " x



Surveyed by H. Morgan
 June, 1962 Reg. Sur. B90

B.G.
CORP
922