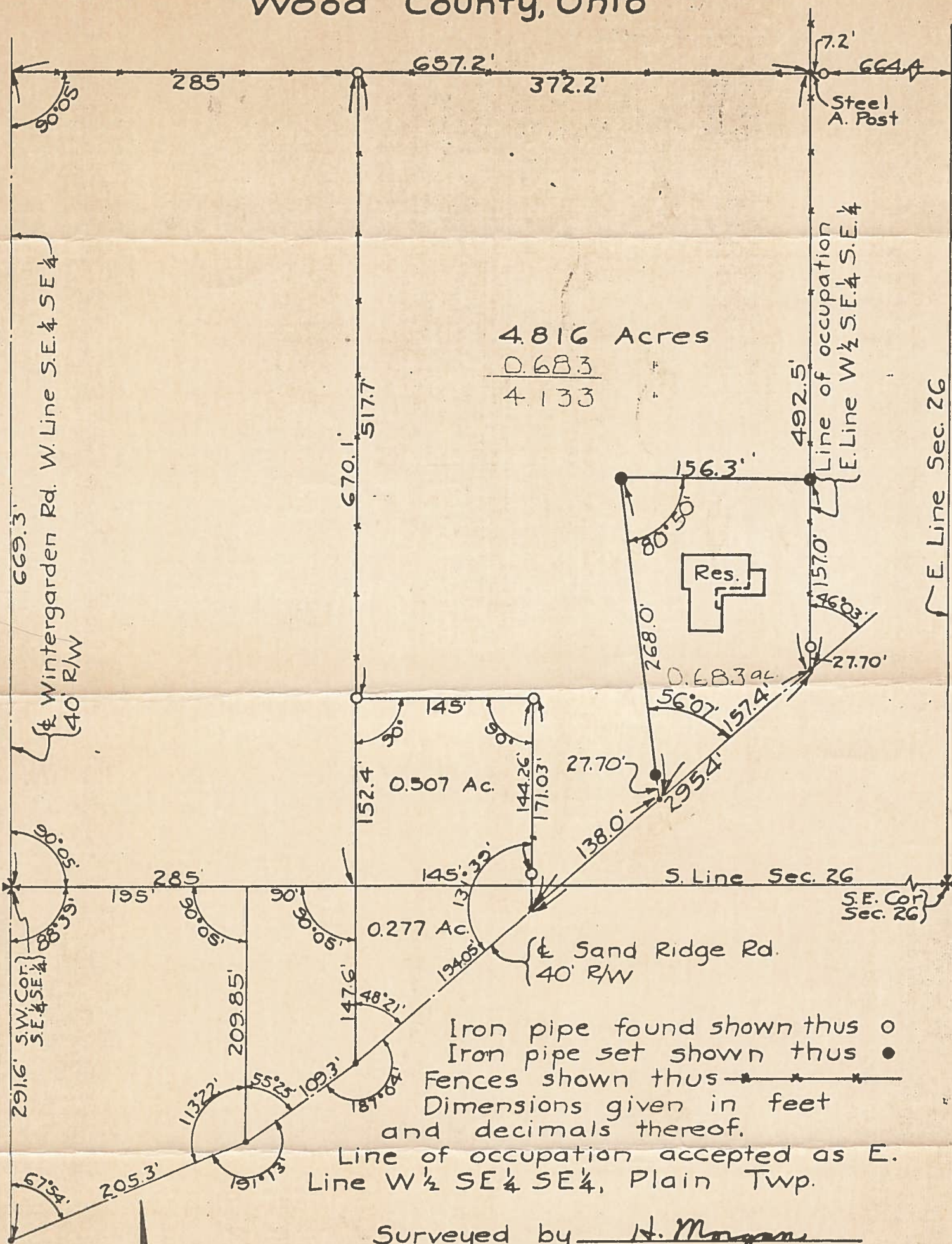


B.G. COEP 941

# Survey in W 1/2 SE 1/4 SE 1/4 Sec. 26 Plain Township Wood County, Ohio



4.816 Acres  
 $\frac{0.683}{4.133}$

0.507 Ac.

0.277 Ac.

0.683 ac.

Iron pipe found shown thus ○  
 Iron pipe set shown thus ●  
 Fences shown thus —+—+—+—+—  
 Dimensions given in feet  
 and decimals thereof.  
 Line of occupation accepted as E.  
 Line W 1/2 SE 1/4 SE 1/4, Plain Twp.

Surveyed by H. Morgan  
 Oct. 1956 Reg. Sur. 890  
 Oct. 1964



B.G. COEP 941