

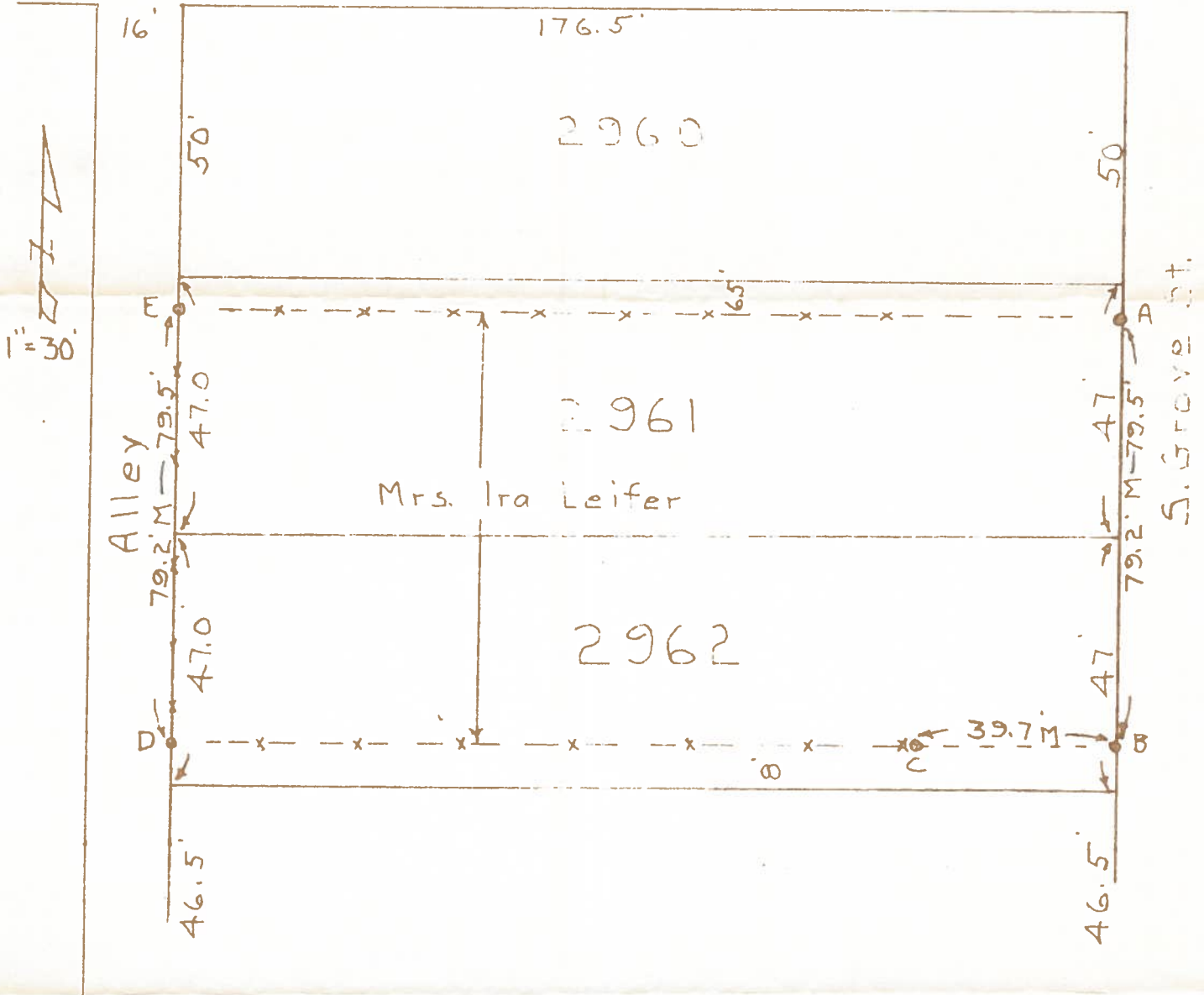
B.G.
corp
907

SURVEY

Lots 2961 and 2962

Bowling Green, O.

Ordway Ave.



At point A and B found iron pins set by Don Maglott. Checked same and accepted .

Points D and E are steel anchor posts. Accepted same.

Set iron pipe at point C on line B-D.

Dimensions shown are record unless marked M (measured)

Fences shown thus $\times - \times - \times$

Surveyed by H. Morgan

Aug. 1961 Reg. Sur. 890

B.G.
corp
907