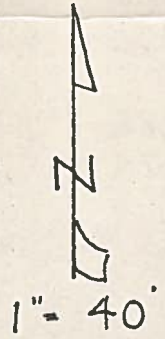
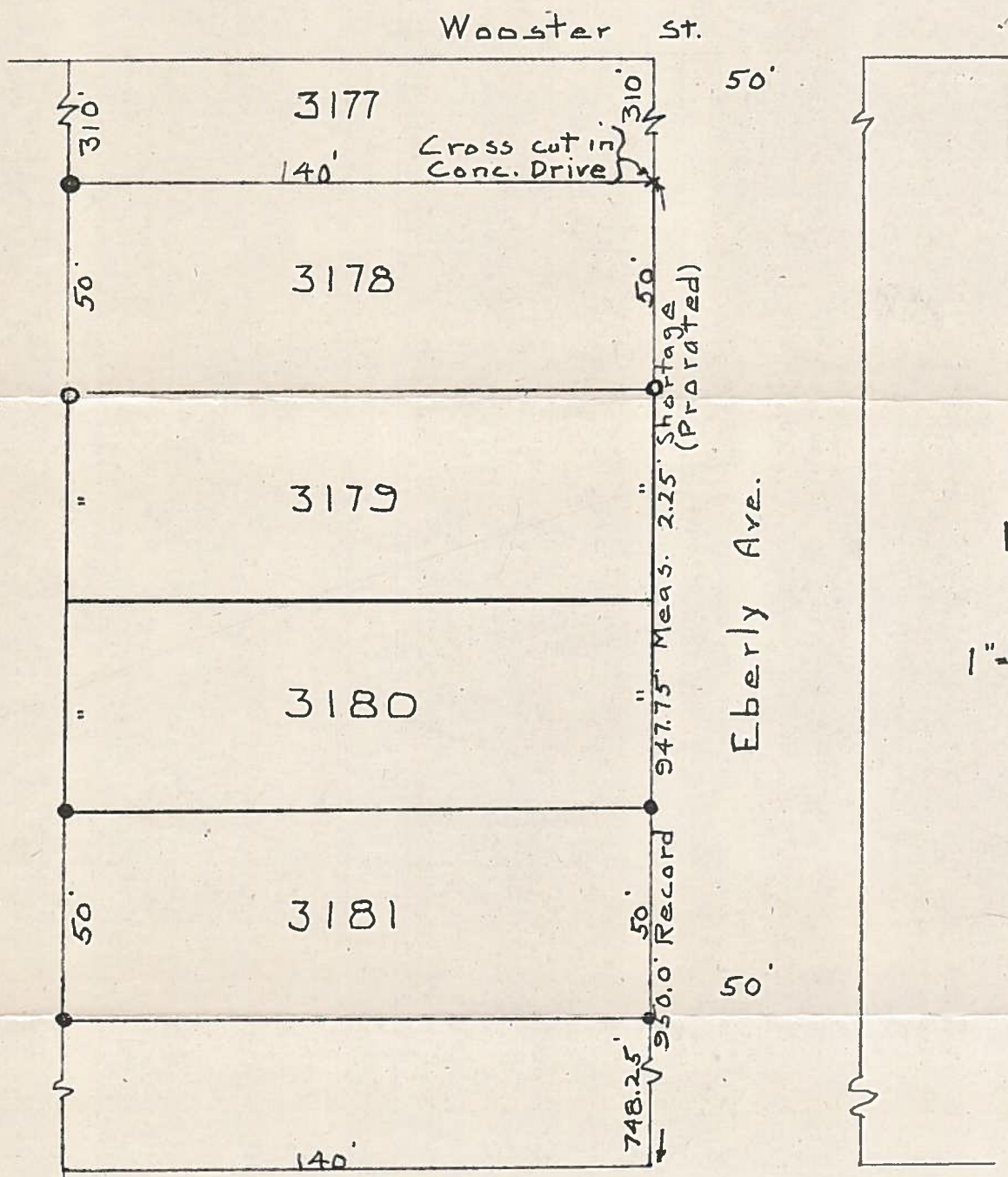


B.G. Corp 992

Survey
Lot 3178
Bowling Green, O.

1851

1851



Mon. S.W. Cor SE. 1/4

Mon. S.E. Cor SE. 1/4

Pearl St. - S. Line S.E. 1/4 Sec. 24 Plain Twp

Shortage prorated - 0.12' per Lot.
Iron pipe found at points shown thus

Surveyed by H. Morgan

Nov. 1968

Reg. Sur. 890

B.G. Corp 992