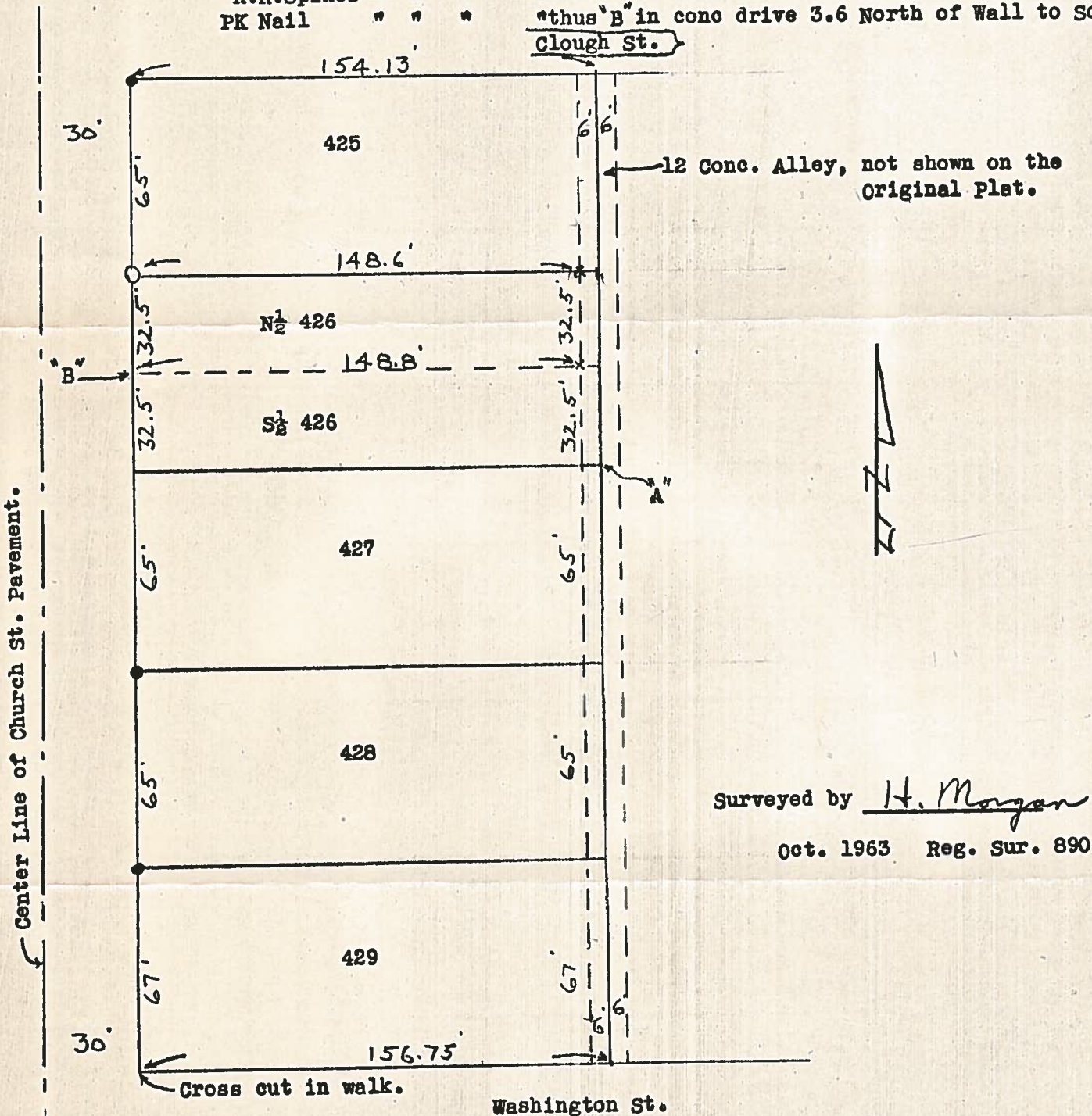


B.G.  
CORP  
936

SURVEY  
N.  $\frac{1}{2}$  Lot 426  
Bowling Green, O.

Iron pins found at points shown thus •  
Roofing tack found at point "A"  
Iron pipe set at point shown thus ○  
R.R. Spikes " " " " " " " " X  
PK Nail " " " " " " " " \*thus "B" in conc drive 3.6 North of Wall to South.  
Clough St.



B.G.  
CORP  
936