



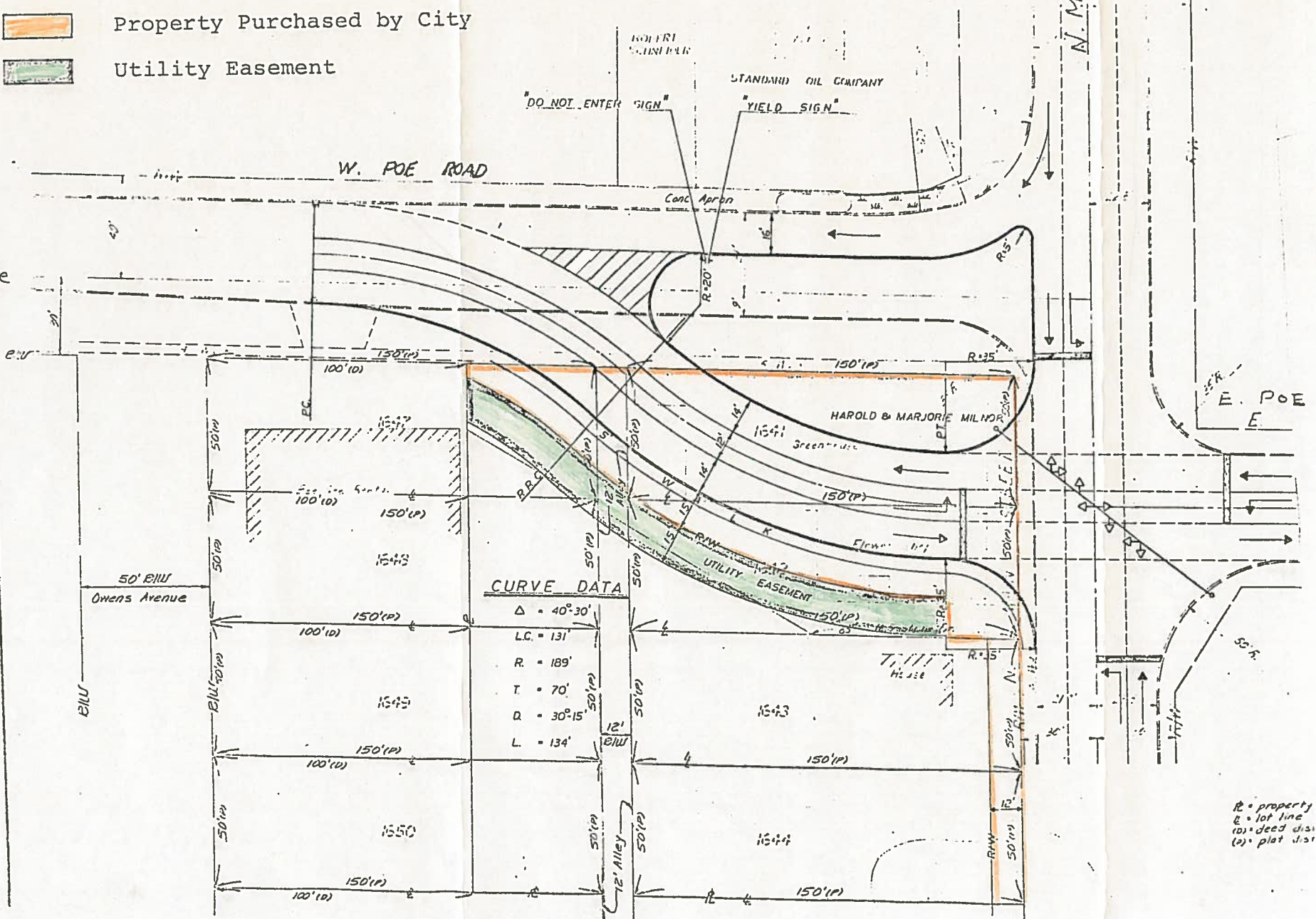
B.G. CORP 1161

B.G. CORP 1161

SUBDIVISION OF PARCELS: Harold Milnor to City of Bowling Green Southwest Corner - Main at Poe

N
No Scale

-  Property Purchased by City
-  Utility Easement



352-1543

R = property
E = lot line
(1) = deed dis
(2) = plat dis