

B.G.
CORP
1067

SURVEY

in
N.E. $\frac{1}{4}$, Sec. 24, Plain Twp.
Powling Green O.
City Park

Control points found at points shown thus Δ

"A" North $\frac{1}{4}$ Cor. N.E. $\frac{1}{4}$

"B" South " " " "

Iron pipe set at points shown thus \bullet

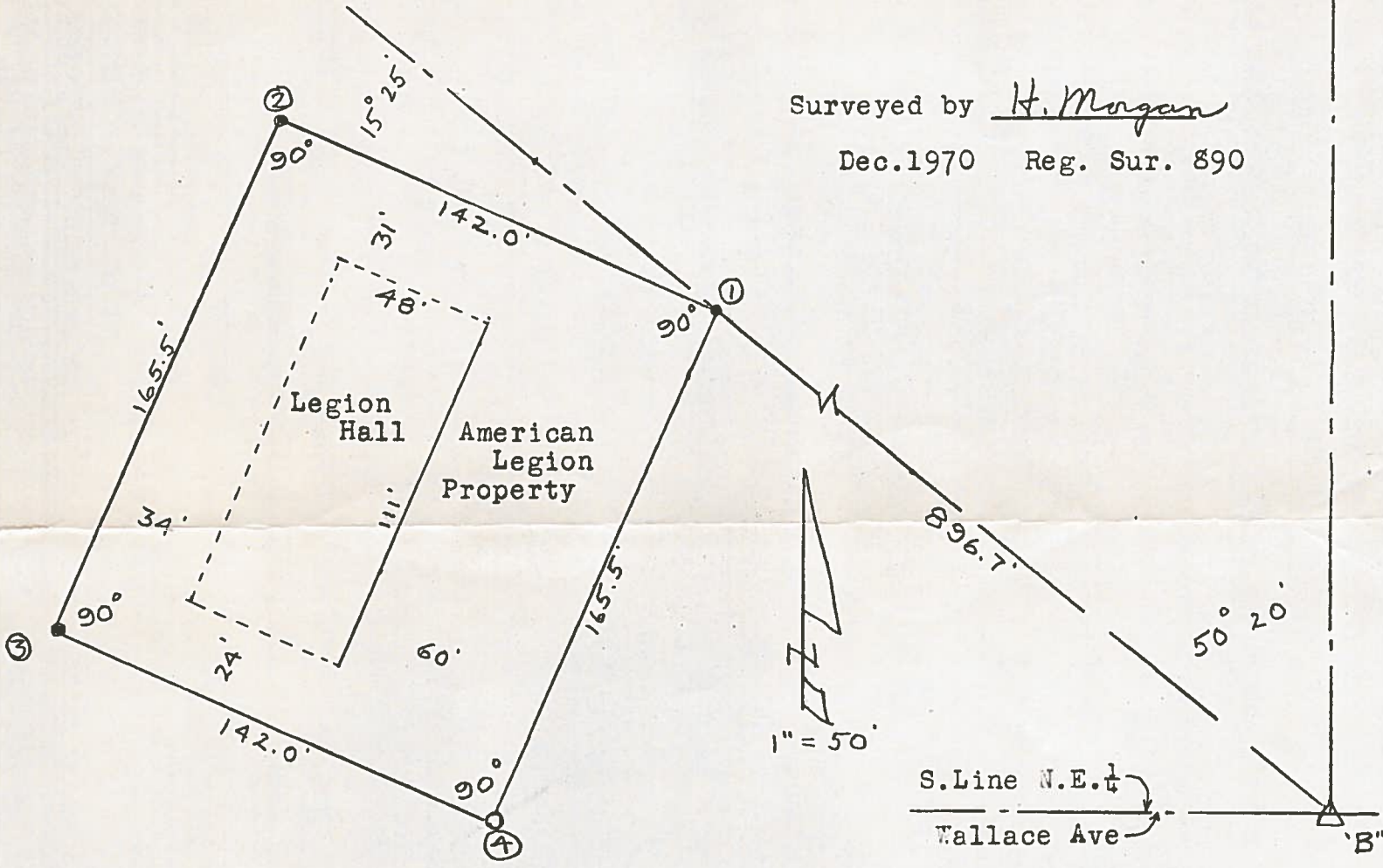
Railroad Spk. set at point shown thus \circ

- References
- ① { 70.5' N.N.E. to south cor. conc. platform
 - { 67.95' S.W. " north " Legion Hall
 - ② { 46.18' S.E. " N.W. " " "
 - { 30.00' N. " S.W. " Bldg.
 - ③ { 41.17' N.E. " " " Legion Hall
 - { 1415' N. " base Hydrant
 - ④ { 58.95' W.N.W " shiner in 24" Oak
 - { 32.94' S. " " " 30" "
 - { 44.83' E.N.E. " S.W. cor. Bldg.

Fairview Ave.
E. $\frac{1}{4}$ Sec. Line

Surveyed by H. Morgan

Dec. 1970 Reg. Sur. 890



B.G.
CORP
1067