

B.G.  
CORP  
964

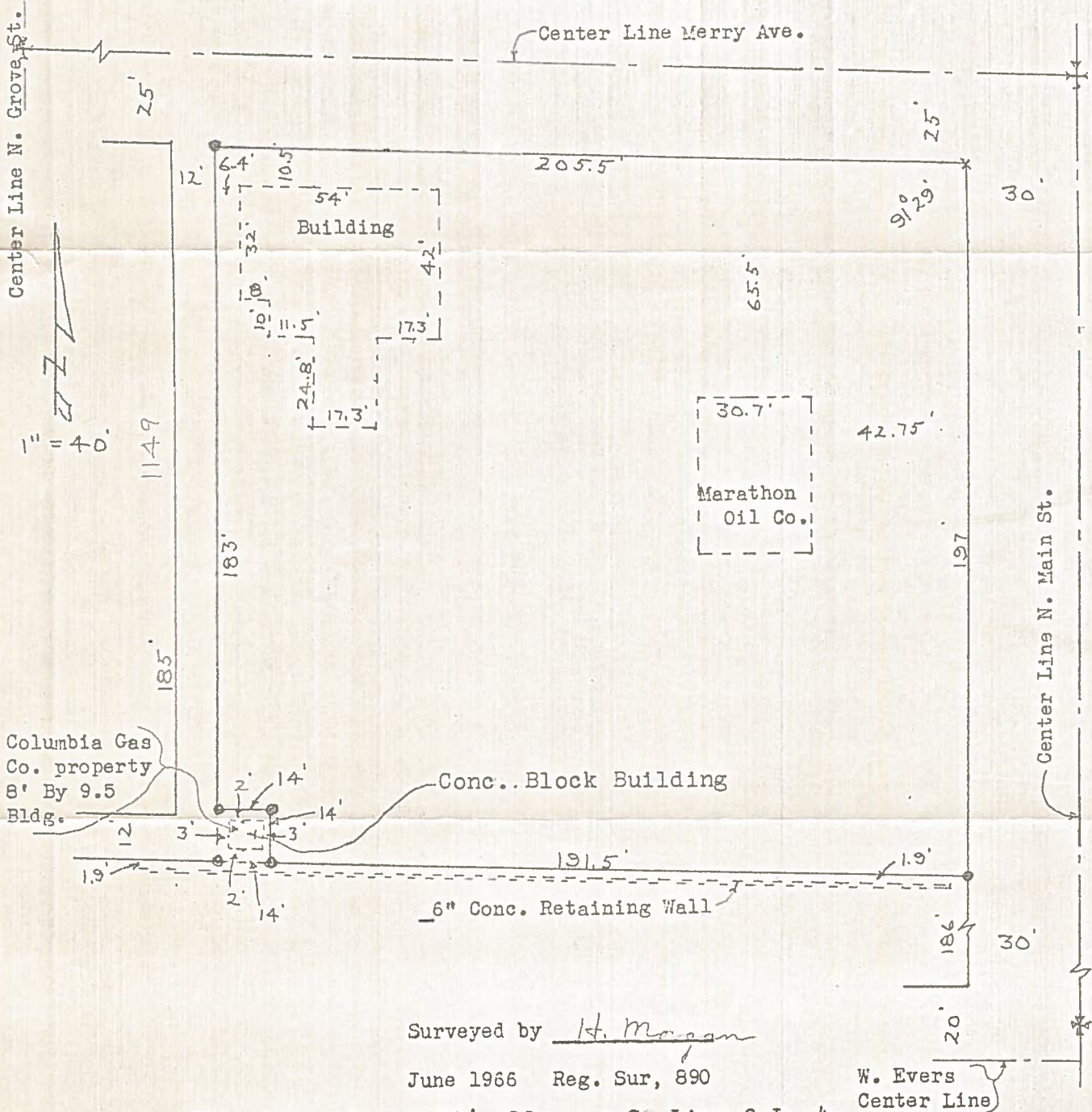
XERO COPY

SURVEY  
of  
Out Lot 4  
Bowling Green, O.

XERO COPY

XERO COPY

Control points shown thus \*  
Iron pipe set at points shown thus ●  
P.K. Nail set at point shown thus x



Surveyed by H. Morgan  
June 1966 Reg. Sur, 890

W. Evers  
Center Line

City maps show a 12' alley on S. Line O.L. 4..  
I could find no record of alley either in the  
County or City Files..

B.G.  
CORP  
964