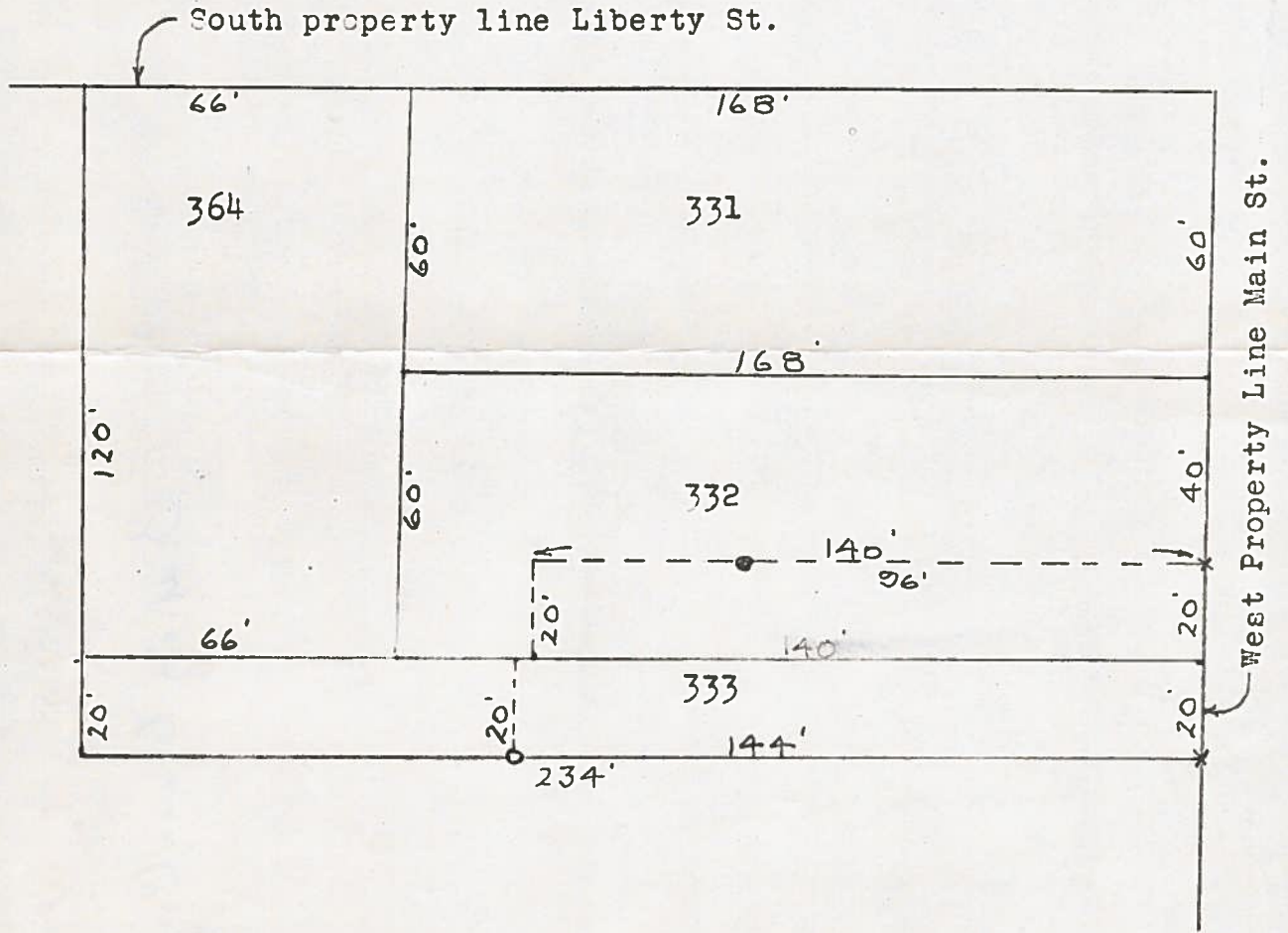


B.G.
CORP
1023

S U R V E Y

of
Lot 332 (East 140'-of the South 20')
" 333 (Except the West 90')
L. H. Armbruster
Owner



Found Steel Corner Post at point shown thus ○
Set Steel Pin at point shown thus ●
Cut Crosses in walk at points shown thus x

Surveyed by H. Morgan

Dec. 1970 Reg. Sur. 890

B.G.
CORP
1023