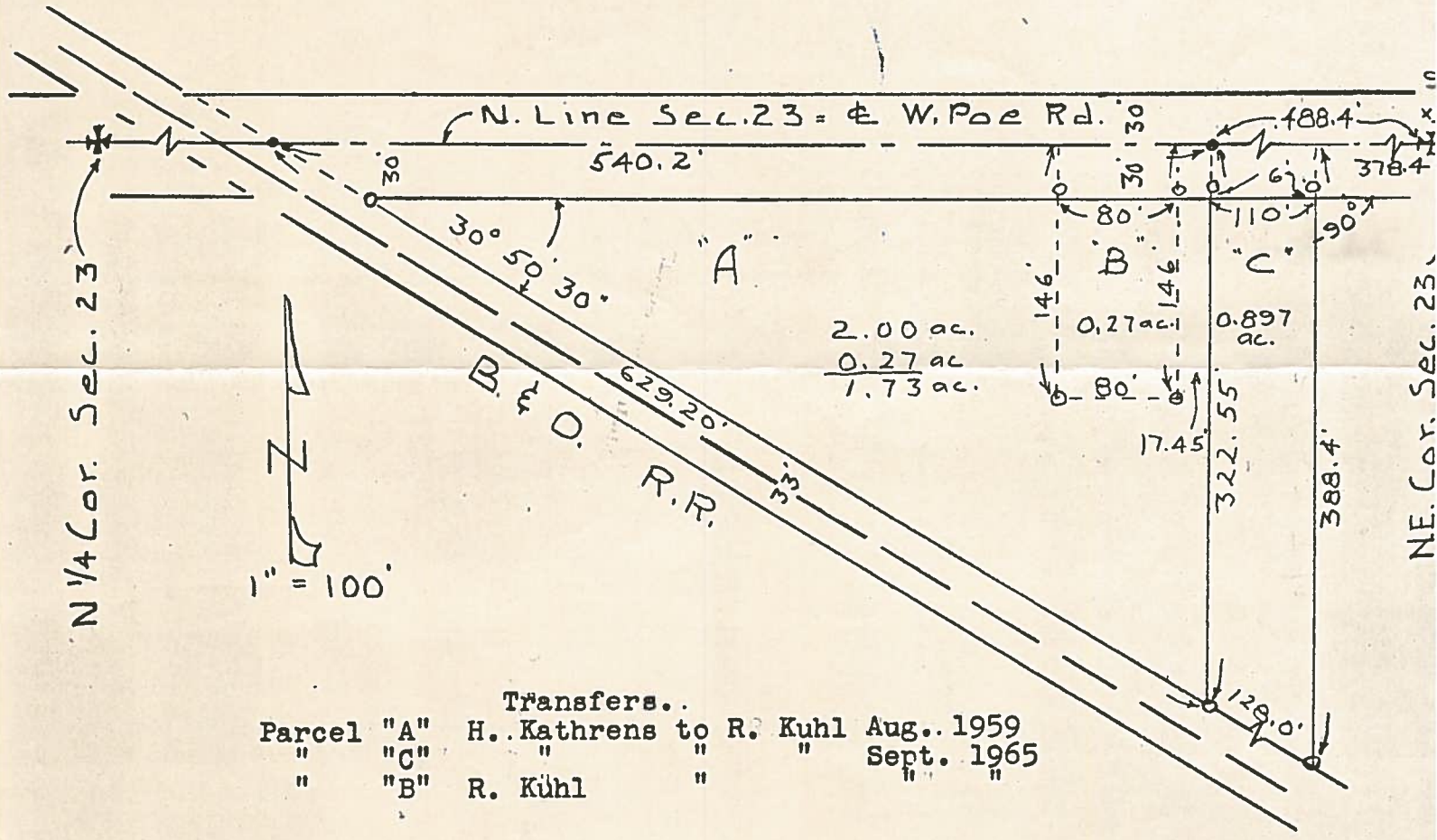


B.G.
C&P
1029

SURVEY
in

N. E. $\frac{1}{4}$ of Section 23, Plain Twp. Wo. Co. O.



| | | | | | |
|--------|-----|-------------|------------|-------|------|
| | | Transfers.. | | | |
| Parcel | "A" | H. Kathrens | to R. Kuhl | Aug. | 1959 |
| " | "C" | " | " | Sept. | 1965 |
| " | "B" | R. Kuhl | " | " | " |

Control points found at points shown thus - - - *

R.R. Spks. set at points shown thus - - - - - ●

Iron pipe set at points shown thus - - - - - ○

Dimensions given in feet and decimals thereof.

Surveyed and platted by H. Morgan

Aug. 1959
Sept. 1965

Reg. Sur. 890

Note. N.E. Cor. of Sec. 23 as set by Wood County Engineer shown thus - - - x

B.G.
C&P
1029