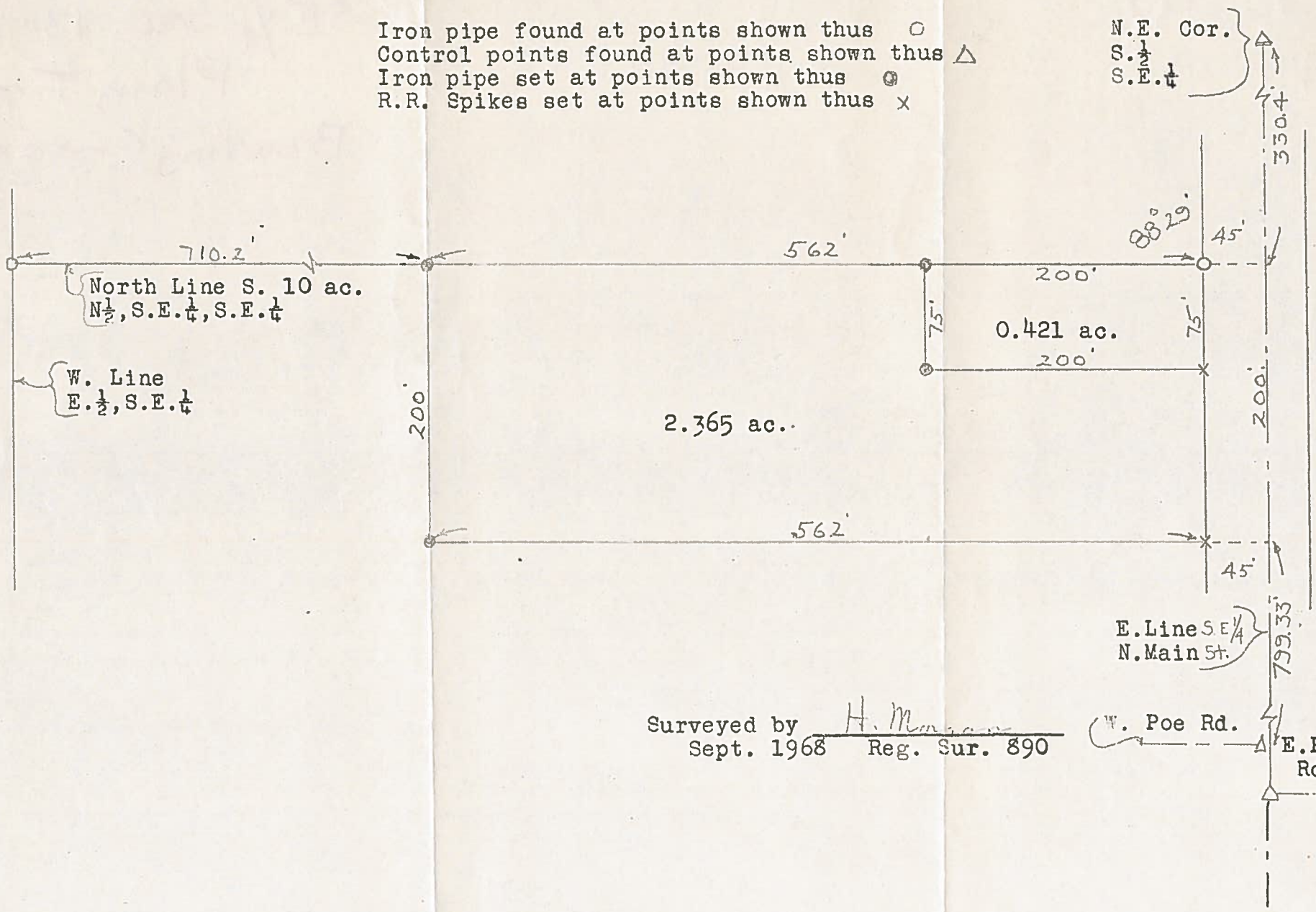


B.G.  
CORP  
988

B.G.  
CORP  
988

SURVEY  
in  
S.E. 1/4, Sec. 13, Plain Township  
Bowling Green, O.

Iron pipe found at points shown thus ○  
Control points found at points shown thus △  
Iron pipe set at points shown thus ⊙  
R.R. Spikes set at points shown thus ×



Surveyed by H. Monahan  
Sept. 1968 Reg. Sur. 890

W. Poe Rd. △ E. Poe Rd. △