

B.G.
CORP
951

SURVEY
in
N.½, N.E.¼, S.E.¼, Sec. 13
Plain Twp. Bowling Green C.

Iron pipe found at points shown thus -- ●

North Line S.E.¼ Sec. 13

Burt Amos

Surveyed by H. Morgan

Aug. 1964 Reg. Sur.
890

Mort Weislow
1.60 ac.
Vol. 429 Page 72

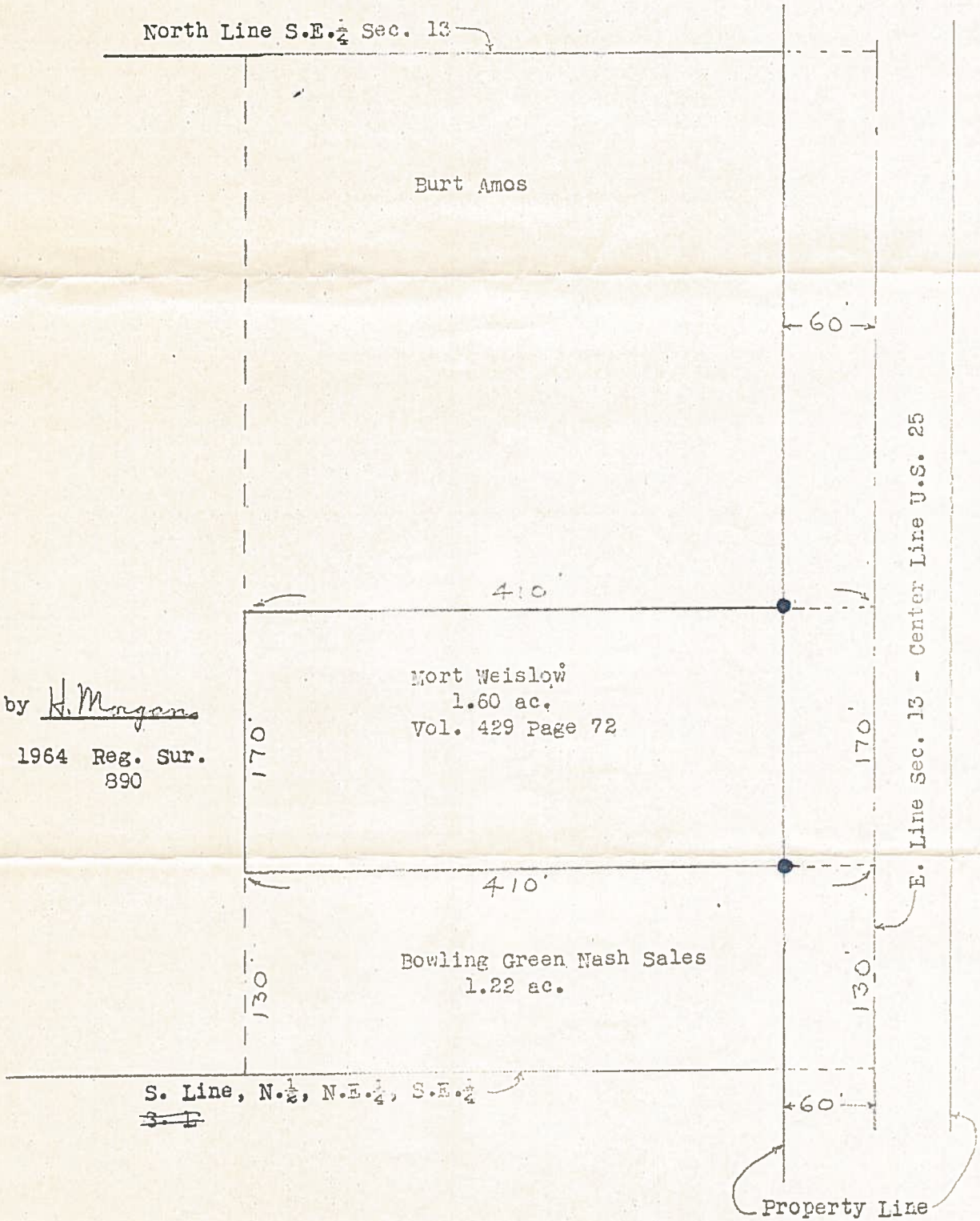
Bowling Green Nash Sales
1.22 ac.

S. Line, N.½, N.E.¼, S.E.¼

~~S. E~~

Property Line

E. Line Sec. 13 - Center Line U.S. 25



B.G.
CORP
951