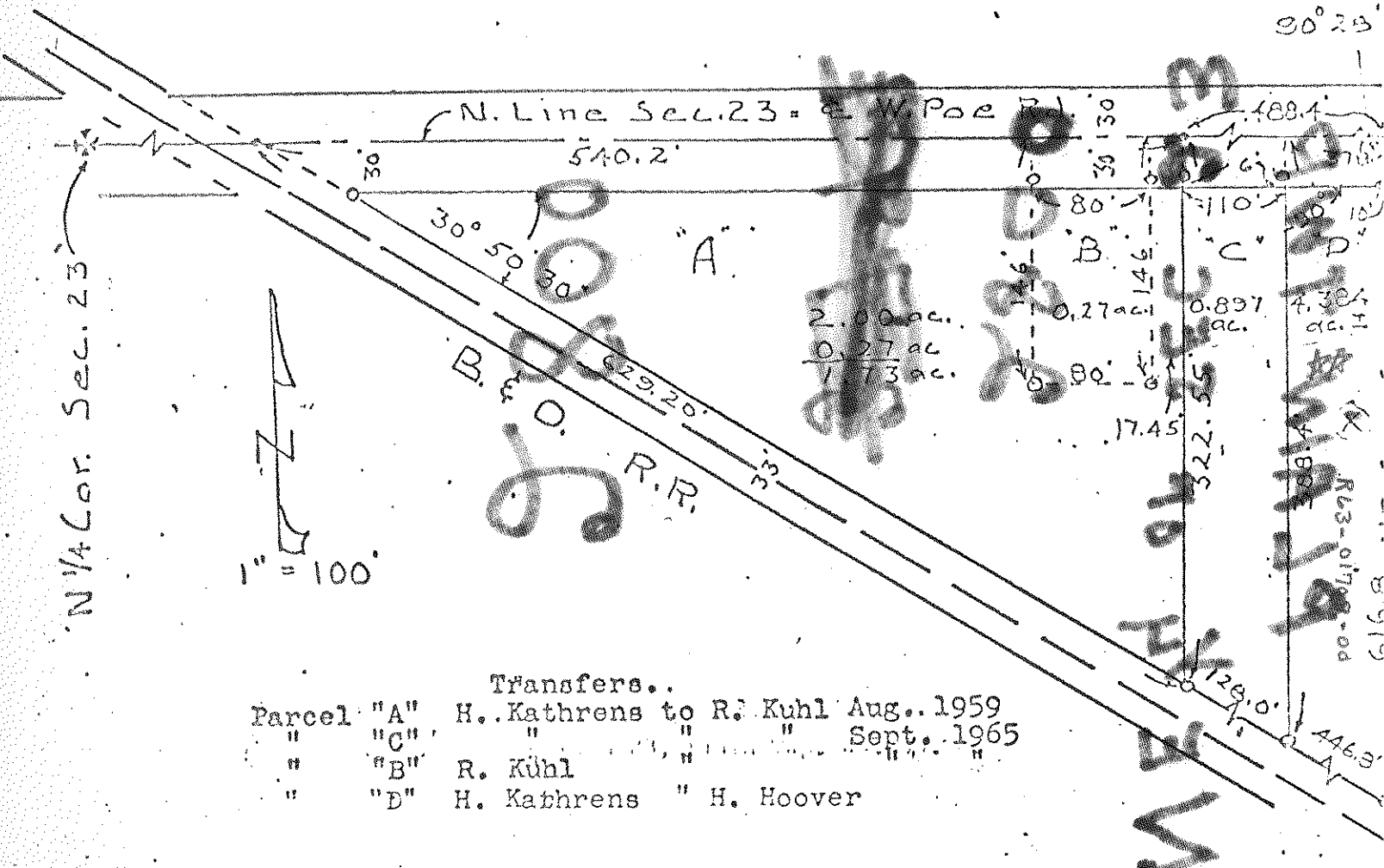


495  
PLAIN

SURVEY

N. E.  $\frac{1}{4}$  of Section 23, Plain Twp. Wb. Co. O.

① = Location of  
P. & O. Site



Transfers..  
 Parcel "A" H. Kathrens to R. Kuhl Aug. 1959  
 " "C" " " " " Sept. 1965  
 " "B" R. Kuhl " " " " "  
 " "D" H. Kathrens " H. Hoover

Control points found at points shown thus - - - \*  
 R.R. Spks. set at points shown thus - - - - - o  
 Iron pipe set at points shown thus - - - - - o  
 Dimensions given in feet and decimals thereof.

Surveyed and platted by H. Morgan

Aug. 1959 Reg. Sur. 890  
 Sept. 1965  
 Aug 1973

Note. N.E. Cor. of Sec. 23 as set by Wood County Engineer shown thus - - - x

495  
PLAIN